



Meetings and Events



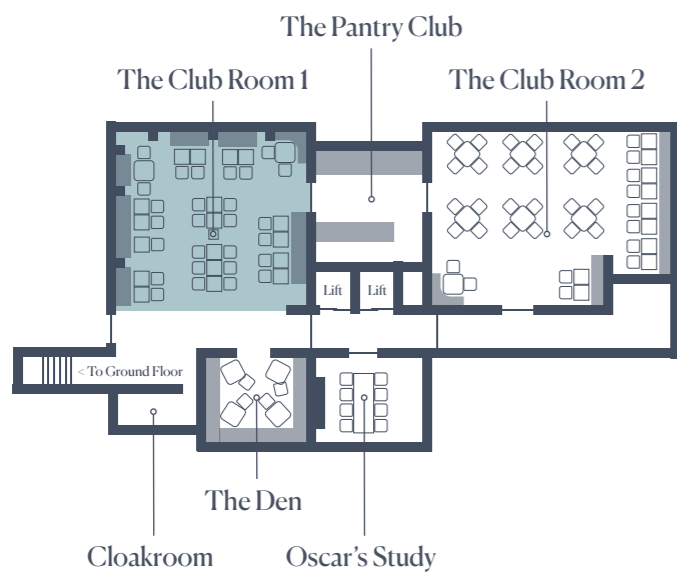
The Mayfair
Townhouse



The Mayfair Townhouse

Room for any Dandy occasion

Indulge your curiosity by hosting an event or meeting at The Mayfair Townhouse. Delight your guests, as moments of surprise await around every corner. Business or pleasure, we have rooms to suit any occasion that your heart desires. Hold an elegant Champagne reception in the wonderful private hideaway of The Den, or throw the ultimate party by combining all of the spaces within The Lower Ground to create a stylish hub, or simply host a meeting of minds in Oscar's Study.



The Club Room 1

Twists of the unexpected, curiosities and a humorous, playful design tone resonate throughout this space. Transform this room to suit your desires; it can be set for a drinks and canapés reception for up to 75 standing, or for a seated event for up to 42 people.

Connect to The Den, The Pantry Club or The Club Room 2 if you simply cannot cut your guest list and require the extra space, there's always room for one more after all!

Area (square metres)	69
Area (square feet)	745
Ceiling height (metres)	2.5
Dimensions (metres)	8.16 x 8.48
Drinks and Canapés Reception	75
Seated (existing furniture)	42

See page 11 for all room capacities.





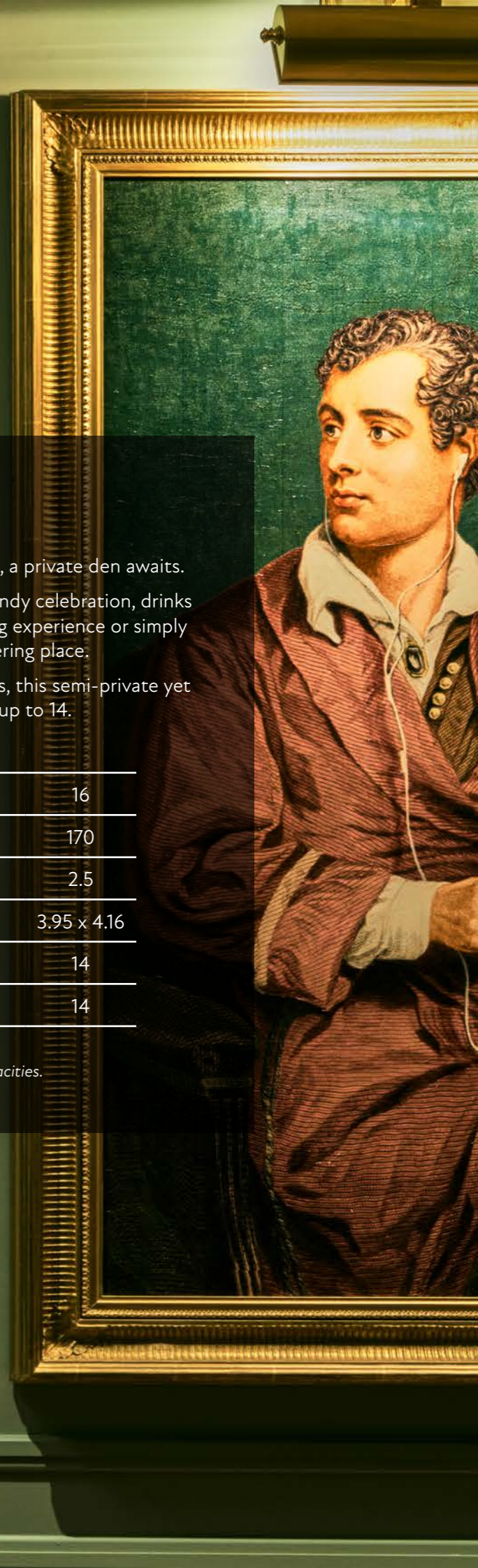
The Den

Beyond the walls of The Lower Ground, a private den awaits. This versatile space can be used for a Dandy celebration, drinks and canapés reception, a convivial dining experience or simply as a 'meeting of minds' gathering place.

With various fox motifs adorning its walls, this semi-private yet chic space suits parties of up to 14.

Area (square metres)	16
Area (square feet)	170
Ceiling height (metres)	2.5
Dimensions (metres)	3.95 x 4.16
Drinks and Canapés Reception	14
Seated (existing furniture)	14

See page 11 for all room capacities.

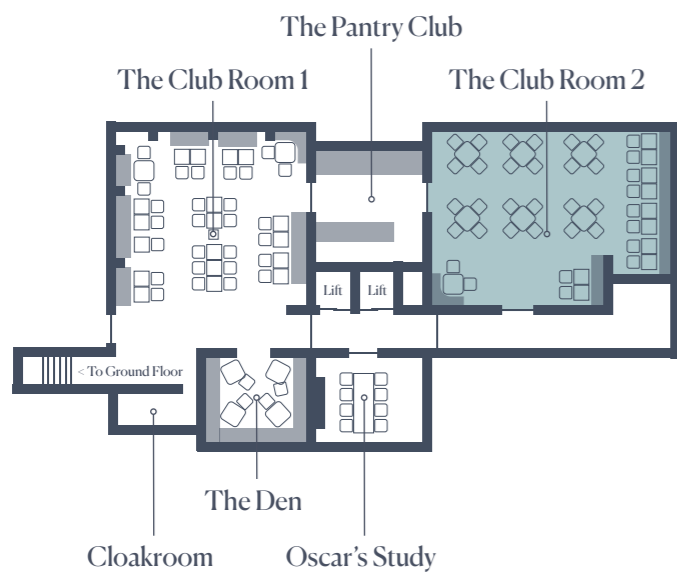




The Pantry Club

This interconnecting hub can be used in conjunction with The Club Rooms to create a separate hideout for your event.

Use The Pantry Club as a place to eat and treat or transform it into your own exclusive bar area with a private bartender or even for a personal chef's demonstration.



The Club Room 2

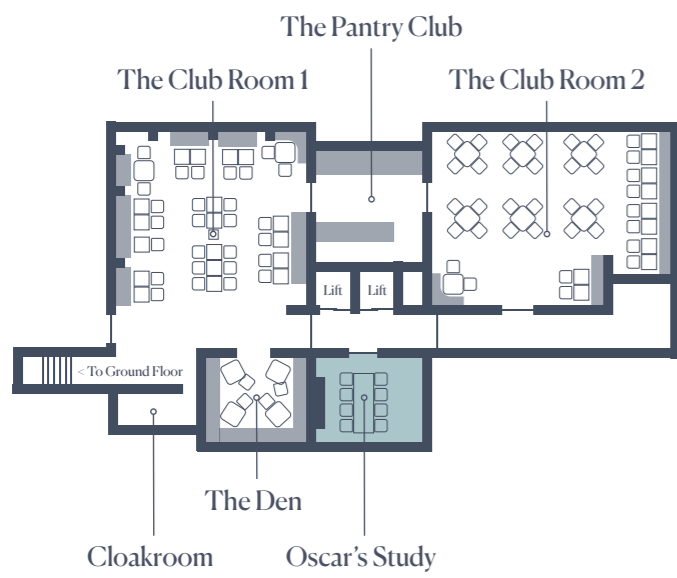
With its statement mural of Green Park taking centre stage, The Club Room 2 is an extension of The Club Room 1, but with its own unique character.

Seductively lit, spacious yet still very much an intimate space, this room is perfect for up to 75 guests. Combine it with The Club Room 1 via The Pantry Club for the ultimate party or conference space. Or, for the true Townhouse experience, add The Den. The choice is yours at our exclusive address.

Area (square metres)	73
Area (square feet)	782
Ceiling height (metres)	2.4
Dimensions (metres)	7.57 x 7.87
Boardroom (existing furniture)	12
U-Shape (existing furniture)	14
Banquet (existing furniture)	35
Cabaret (existing furniture)	28
Theatre (existing furniture)	40
Drinks and Canapés Reception	75
Seated (existing furniture)	50

See page 11 for all room capacities.





Oscar's Study

Secluded, secretive and sleek, Oscar's Study can host up to 8 guests seated and is perfectly suited to whatever is on your agenda, whether that be a delicious intimate feast or a private meeting of minds.

Adorned with a 55-inch mirrored TV, host your event with state-of-the-art equipment while enjoying your elegant surroundings.

As Oscar Wilde once famously said: "I can resist everything except temptation." So why not indulge yours?

Area (square metres)	14
Area (square feet)	154
Ceiling height (metres)	2.5
Dimensions (metres)	3.87 x 4.05
Seated (existing furniture)	8

See page 11 for all room capacities.



The Dandy Bar

The Dandy Bar is an all-day dining destination that transforms into an evening experience. A place to pause, relax and meet – whether over breakfast, morning coffee, lunch or evening drinks. An extensive yet carefully curated list of cocktails and spirits refine our menus, with avant-garde takes on the classic Dandy cocktails once enjoyed by hedonists of the area. It's no surprise the design evokes the Dandy spirit.

Area (square metres)	14
Area (square feet)	154
Ceiling height (metres)	2.3
Dimensions (metres)	8.57 x 8.13
Drinks and Canapés Reception	60
Seated (existing furniture)	40

See page 11 for all room capacities.



A stylish hub for entertaining or professionals

An event at The Townhouse is intuitively delightful, whether hosting a party, celebrating milestones or arranging a get together among friends and colleagues. The Lower Ground can be transformed to suit any occasion, accommodating up to 100 people. Bespoke menus, theatrical cocktails, creative canapés are showcased at their best in our engaging, warm spaces. With its connecting spaces such as The Den, The Pantry Club and The Club Rooms, your event will be a hub of activity.

Your Showroom

Make it yours

The Lower Ground

The Club Room 1

The Pantry Club

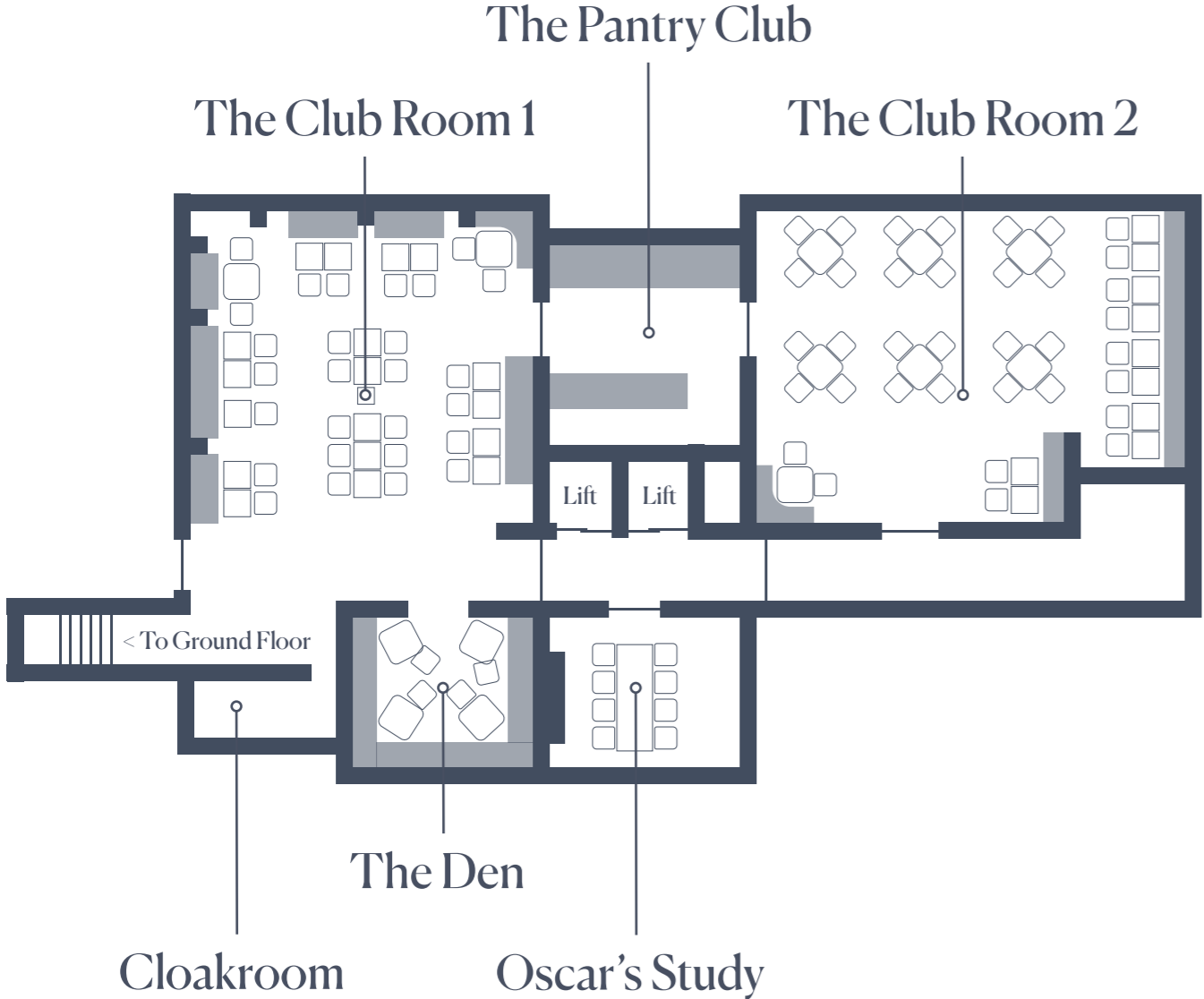
The Club Room 2

The Den

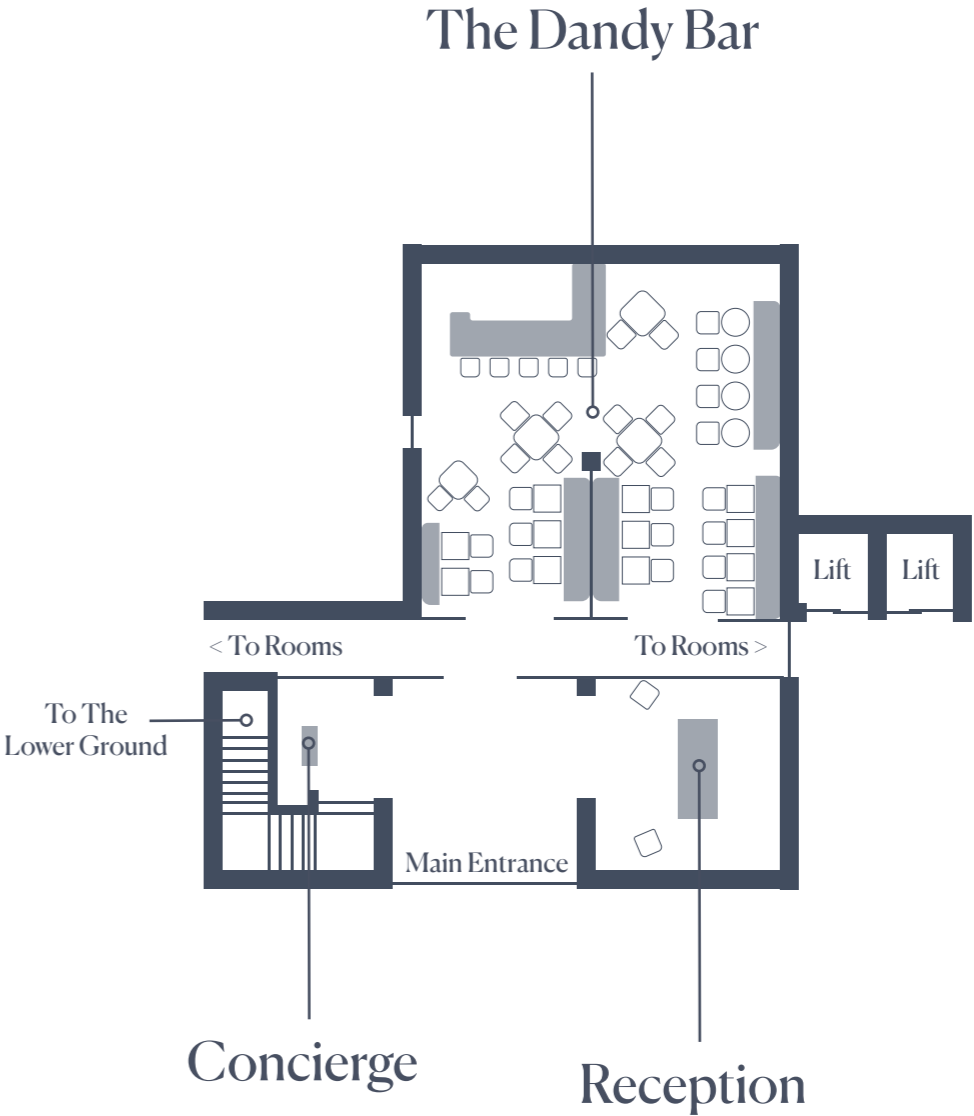
Oscar's Study

Floor Plans

The Lower Ground



The Dandy Bar



Meeting Room Capacities & Dimensions

	The Club Room 1	The Club Room 2	The Den	The Club Room 1 & 2 with The Pantry	The Club Room 1 & The Den	Oscar's Study	The Cloakroom	Entire Lower Ground	The Dandy Bar
Area (square metres)	69	73	16	142	85	14	9	172	14
Area (square feet)	745	782	170	1,527	915	154	87	1,851	154
Ceiling height (metres)	2.5	2.4	2.5	2.4 - 2.5	2.5	2.5	2.5	2.5	2.3
Dimensions (metres)	8.16 x 8.48	7.57 x 7.87	3.92 x 4.16	-	-	3.87 x 4.05	3.28 x 2.75	-	8.57 x 8.13
Boardroom (existing furniture)	-	18	-	-	-	8	-	-	-
U-Shape (existing furniture)	-	14	-	-	-	-	-	-	-
Banquet (existing furniture)	-	35	-	-	-	-	-	-	-
Cabaret (existing furniture)	-	28	-	-	-	-	-	-	-
Theatre (existing furniture)	-	40	-	-	-	-	-	-	-
Drinks and Canapés Reception	75	75	14	100	75	-	-	100	60
Seated (existing furniture)	42	50	14	100	54	-	-	100	40



Your Private Suite

The perfect, relaxed, informal space for product launches, Private Meeting (Lounge Style), intimate drinks and canapés reception.



The Garden Suites

Combine both Garden Suites
80 square metres | Up to 20 guests
Patio included.



The Fifth Floor Suite

49 square metres | Up to 8 guests



The Skylight Suite

47 square metres | Up to 8 guests



The Loft Suite

77 square metres | Up to 20 guests
Terrace included.



27-41 Half Moon Street,
LONDON, W1J 7BG
TEL: 020 8138 3400

events@themayfairtownhouse.com

THEMAYFAIRTOWNHOUSE.COM