

SYNTHÈSE

The Elemental Resonance



A JOURNEY BENEATH THE SURFACE OF FLAVOUR

In the beginning, there was chaos — potential shaped by four elemental forces: fire rising, earth grounding, water flowing, and air moving unseen. These elements were more than mere matter; they carried meaning, reflected in both nature and within ourselves. From this ancient wisdom comes SYNTHÈSE — a fusion of elements, ingredients, and intention.

Each cocktail tells a story, embodying a distinct archetype: The rebel born of fire, the sage rooted in earth, the mystic shaped by water, the visionary carried by air. In choosing your drink, you're responding to the call of an element waiting to be expressed.



Earth



Water



Fire



Air

Will you ignite, ground, flow, or rise tonight?



THE CAREGIVER

THE CAREGIVER

ARTISAN

Earthy | Velvety | Sweet

Earthy and unhurried, this cocktail settles the palate before yielding to a soft, rounded sweetness. Its velvety finish lingers – a quiet nod to true craftsmanship.

Pensador Mezcal | Beetroot and Turmeric Cordial | Citrus |
Raspberry | Walnut Liqueur | White Chocolate Foam



£ 2 3

Should you have any allergies or intolerances, please do ask a team member who will be happy to assist. All prices include VAT at the current rate. A 12% discretionary service charge will be added to your bill.



THE SAGE

THE SAGE

C O R N E R S T O N E

Smoky | Intricate | Balanced

Ancient wisdom rises in smoky stillness, grounding you
before unfolding into brighter layers - bitter, sweet and rich
with meaning.

The Singleton 12yo, | Bulleit Rye | Cynar | Lapsang Tea |
Spiced Pineapple Cordial | Soy Sauce | Caramelised
Cantaloupe Puree | Citrus | Ginger Bitters



£ 2 3

Should you have any allergies or intolerances, please do ask a team member who will be happy to assist. All prices include VAT at the current rate. A 12% discretionary service charge will be added to your bill.



THE JESTER

THE JESTER

GEMINI PARADOX

Honeyed | Playful | Sparkling

Truth is full of contradictions. Honeyed warmth gives way to layers of complexity, then circles back to sweetness. The sparkling finish dances on the palate, uncovering hidden depths with every taste.

The Macallan 12yo DC | Beesou Honey Aperitif |
Chamomile and Saffron Syrup | Verjus | London Essence
Aromatic Orange and Fig Soda | Bitters



£ 2 3

Should you have any allergies or intolerances, please do ask a team member who will be happy to assist. All prices include VAT at the current rate. A 12% discretionary service charge will be added to your bill.



THE INNOCENT

THE INNOCENT

MOONWAKE

Tropical | Gentle | Pearlescent

This cocktail bursts with tropical brightness before deepening into complex layers, like moonlight's reflection on water.

Ten to One Rum | Pisang Ambon | Pandan | Lemongrass and Kaffir Leaf Syrup | Toasted Coconut Water | Citrus | Saline



£ 2 3

Should you have any allergies or intolerances, please do ask a team member who will be happy to assist. All prices include VAT at the current rate. A 12% discretionary service charge will be added to your bill.



THE EXPLORER

THE EXPLORER

MIRROR LAKE

Crystalline | Herbal | Sharp

Discovery begins with reflection. This crystalline cocktail reveals clarity that deepens with each sip, as layers of herbs and florals unfold inviting you to explore beyond the familiar.

Mermaid Gin | Axia Mastiha | Sake | Labdanum
Cordial | Shiso Bitters | Shiso Oil



£ 2 3

Should you have any allergies or intolerances, please do ask a team member who will be happy to assist. All prices include VAT at the current rate. A 12% discretionary service charge will be added to your bill.



THE MYSTIC

THE MYSTIC

LUCID DRIFT

Bittersweet | Complex | Floral

Between worlds, boundaries fade. This cocktail moves from sweet to bitter, drifting between states of being, with a finish that lingers softly, like a whispered secret in quiet stillness.

The Dalmore 12yo | Akashi-Tai Umeshu | Campari |
Amaro Santoni | Mancino Ambrato | Aquavit |
Seaweed Tincture | Sea Water



£ 2 3

Should you have any allergies or intolerances, please do ask a team member who will be happy to assist. All prices include VAT at the current rate. A 12% discretionary service charge will be added to your bill.



THE REBEL

THE REBEL

FIREBORN

Fiery | Tropical | Light

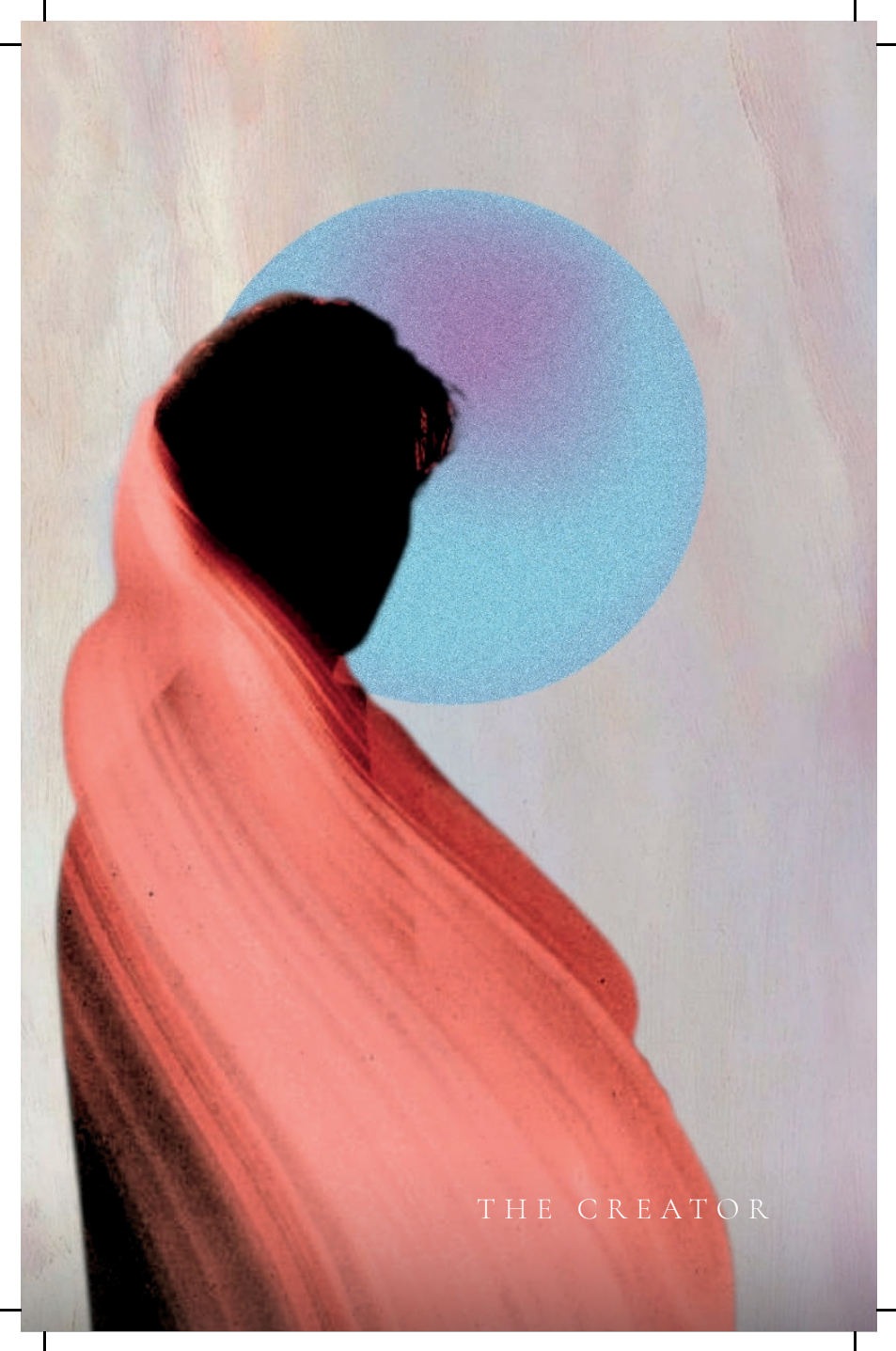
A flicker of heat gives way to smouldering warmth. Like a phoenix reborn, each sip sparks bold renewal.

The Lost Explorer Tequila | The Lost Explorer Mezcal | Theoria
Velvet Electric | Green Chartreuse | Sichuan Pepper | Agave |
Citrus | London Essence Roasted Pineapple Soda



£ 2 3

Should you have any allergies or intolerances, please do ask a team member who will be happy to assist. All prices include VAT at the current rate. A 12% discretionary service charge will be added to your bill.



THE CREATOR

THE CREATOR

S O L A R F L A I R

Zesty | Exotic | Kindled

Tropical brightness bursts on the palate, met by a flicker of heat that awakens the senses. Then comes the warmth — slow, golden, and lingering, like the first light of dawn — a reminder that even familiar flavours can feel entirely new.

The Lost Explorer Tequila | Desi Daru Mango | Calamansi Cordial | Papaya | Vanilla | Mint | Black Pepper Tincture



£ 2 3

Should you have any allergies or intolerances, please do ask a team member who will be happy to assist. All prices include VAT at the current rate. A 12% discretionary service charge will be added to your bill.



THE HERO

THE HERO

TRAILBLAZER

Bold | Aromatic | Rich

A spark of revolution lands with bold energy, unfolding in layers of spice and heat. This is a cocktail that doesn't hold back and is a reminder that growth comes through challenge and those who dare are never forgotten.

Brugal 1888 rum | Mancino Rosso | Almond | Banana
| Chocolate Wine | Spices



£ 23

Should you have any allergies or intolerances, please do ask a team member who will be happy to assist. All prices include VAT at the current rate. A 12% discretionary service charge will be added to your bill.



THE EXPLORER

THE MAGICIAN

THE MAGICIAN

B R E E Z E B E N E A T H

Subtle | Crisp | Surprising

Mastery shows in plain sight. With vegetal notes and crisp acidity unfolding, the finish disappears like a trick, making each sip a new moment of discovery.

Ciroc Vodka | DuPont Calvados | Kai Sake | Amaro Santoni | Celery & Green Apple Cordial | Lemon | Absinthe | Champagne Air



£ 2 3

Should you have any allergies or intolerances, please do ask a team member who will be happy to assist. All prices include VAT at the current rate. A 12% discretionary service charge will be added to your bill.



THE LOVER

THE LOVER

PERFECT EQUINOX

Floral | Harmonious | Effervescent

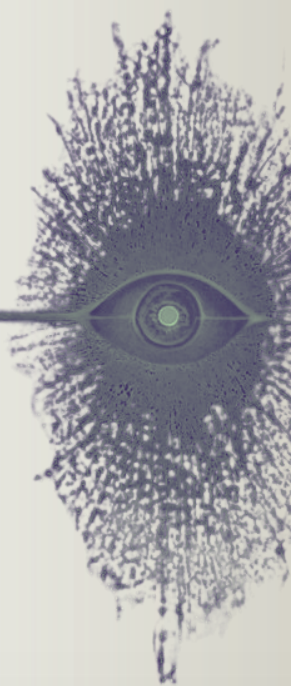
Balance lives where opposites meet. Delicate floral notes weave between sweet and bitter flavours, creating a dynamic tension. The sparkling finish dances across the palate, evoking a sense of connection — both close and distant.

Tanqueray 10 | Akashi-Tai Yuzushu | Cocchi Americano |
Strawberry and Lavender Cordial | Cardamom Bitters | Jasmine
Tea | London Essence White Peach and Jasmine Soda



£ 2 3

Should you have any allergies or intolerances, please do ask a team member who will be happy to assist. All prices include VAT at the current rate. A 12% discretionary service charge will be added to your bill.



THE VISIONARY

THE VISIONARY

C O S M I C C U R R E N T

Zesty | Bright | Ascending

The future doesn't shout — it arrives gently. This cocktail opens bright and crisp, then deepens into layered complexity. A champagne finish lifts it upward, leaving a sense of clarity and lightness in its wake.

Ketel One Citroen | Lychee | Rose | Almond | Citrus |
Bitters | Champagne



£ 2 3

Should you have any allergies or intolerances, please do ask a team member who will be happy to assist. All prices include VAT at the current rate. A 12% discretionary service charge will be added to your bill.



E L E M E N T A L
E C H O E S

Elemental harmony, alcohol-free.

NON-ALCOHOLIC

W H I S P E R W O O D

Stillness speaks in quiet layers. Earthy and green, this cocktail unfolds slowly, grounding the palate like roots settling into forest soil.

Seedlip Garden 108 | Everleaf Forest | Celery & Apple Syrup
| Apple Juice | Almond | Citrus



£15

T I D E G L A S S

Like waves on the shore, this drink flows between tropical brightness and floral calm—cleansing, cooling, and reflective.

Everleaf Marine | Pandan | Coconut Water | Cucumber | Citrus | Elderflower



£15

Should you have any allergies or intolerances, please do ask a team member who will be happy to assist. All prices include VAT at the current rate. A 12% discretionary service charge will be added to your bill.

NON-ALCOHOLIC

FIRST LIGHT

A burst of citrus opens the palate, giving way to gentle spice — a warmth that builds slowly, like dawn breaking with quiet intensity.

Seedlip Spice 94 | Crossip Pure Hibiscus | Blood Orange | Chilli Honey | Citrus | Soda



£15

SKYBORNE

Light and lifted, this airy blend drifts with florals and citrus. A bright, clean profile that offers clarity, like a breath above the noise.

Tanqueray 0% | Jasmine | Lychee | Vanilla | Citrus | Wild Idol White



£15

Should you have any allergies or intolerances, please do ask a team member who will be happy to assist. All prices include VAT at the current rate. A 12% discretionary service charge will be added to your bill.

THE
PINE BAR
MAYFAIR

The Pine Bar

The Biltmore Mayfair,
44 GrosvenorSquare, London, W1K 2HP



@ThePineBar
@TheBiltmoreMayfair

A selection of cocktails created by Alex Cernatu and Anna Flourou.