



ST MICHAEL'S  
MANOR HOTEL



# BEDROOM INFORMATION



# HOLLY MAIN HOUSE, FIRST FLOOR

## GRAND FOUR POSTER ROOM

This luxurious bedroom has a king size four poster bed, open plan lounge area, and large windows that open onto a balcony overlooking the garden.

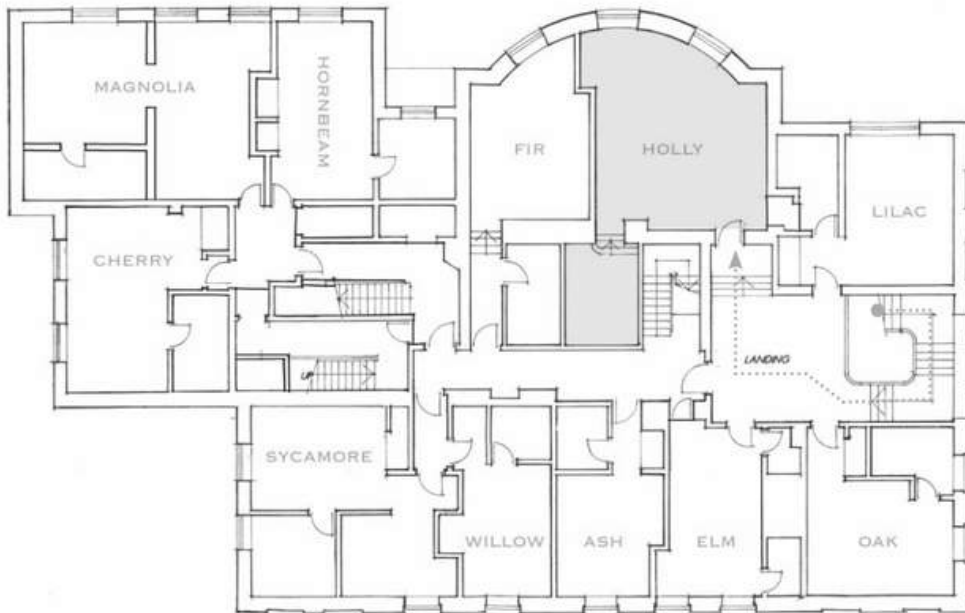
Often chosen for its romantic appeal as the bridal or honeymoon suite, the bedroom has a modern en suite with a bath and separate walk-in shower.

Views from the large windows and balcony over the magnificent gardens.

*Space for a cot or temporary single bed.*

## Facilities:

Air conditioning, complimentary Wi-Fi, large flat screen TV, a luxurious mattress topper, tea and coffee making facilities, biscuits and sweets, bottled water, iron and ironing board, hair dryer and 24 hour room service.



# MAGNOLIA MAIN HOUSE, FIRST FLOOR

## EXECUTIVE SUITE

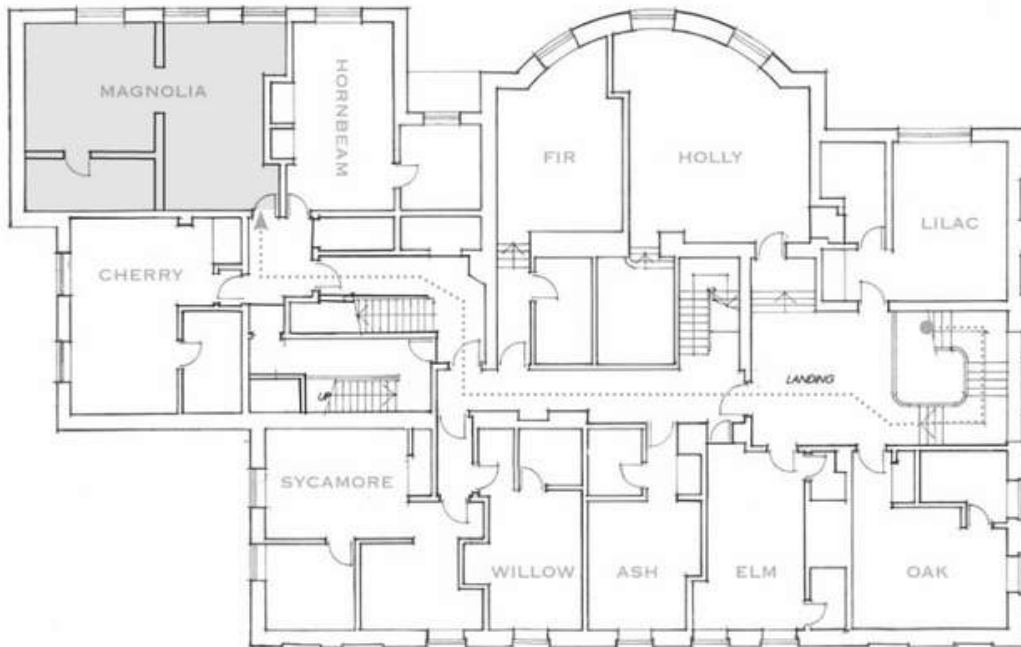
Located on the first floor in the main hotel building has wonderful views overlooking the garden and lake. It offers a spacious room with a king size bed and a separate lounge area containing a sofa bed and dining table.

The en suite has a large bath and walk-in shower. This suite is also ideal as a smaller meeting room for up to eight delegates.

*Suitable for two adults plus two adults/children on the sofa bed, and also has space for a cot.*

## Facilities:

Air conditioning, complimentary Wi-Fi, large flat screen TV, luxurious mattress topper, tea and coffee making facilities, biscuits and sweets, bottled water, iron and ironing board, hair dryer and 24 hour room service.



# SYCAMORE MAIN HOUSE, FIRST FLOOR

## JUNIOR SUITE

Located on the first floor overlooking Fishpool Street, is a large room with a king size bed plus a living area containing a sofa bed. The large en suite has a bath and separate walk-in shower.

This room can be used in conjunction with Willow as a family suite for 4-6 people. Views from the two large windows over historic Fishpool Street.

*Suitable for two adults plus two adults/children on the sofa bed, and also has space for a cot.*

## Facilities:

Air conditioning, complimentary Wi-Fi, large flat screen TV, luxurious mattress topper, tea and coffee making facilities, biscuits and sweets, bottled water, iron and ironing board, hair dryer and 24 hour room service.



# CHERRY MAIN HOUSE, FIRST FLOOR

## JUNIOR SUITE

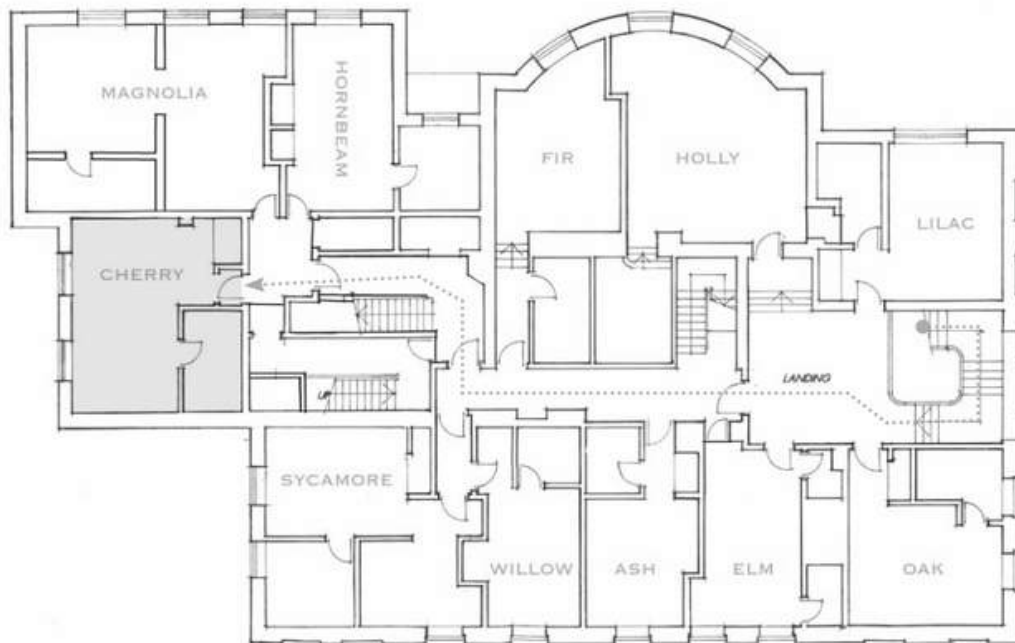
This elegant and grand room has high ceilings, king-size bed and bathroom with en suite bath and shower facilities.

Views from the two large windows over historic Fishpool Street.

*Suitable for 2 – 4 people with a double sofa bed or a cot.*

## Facilities:

Air conditioning, complimentary Wi-Fi, large flat screen TV, a luxurious mattress topper, tea and coffee making facilities, biscuits and sweets, bottled water, iron and ironing board, hair dryer and 24 hour room service.



# HORNBEAM MAIN HOUSE, FIRST FLOOR

## LUXURY MANOR HOUSE ROOM

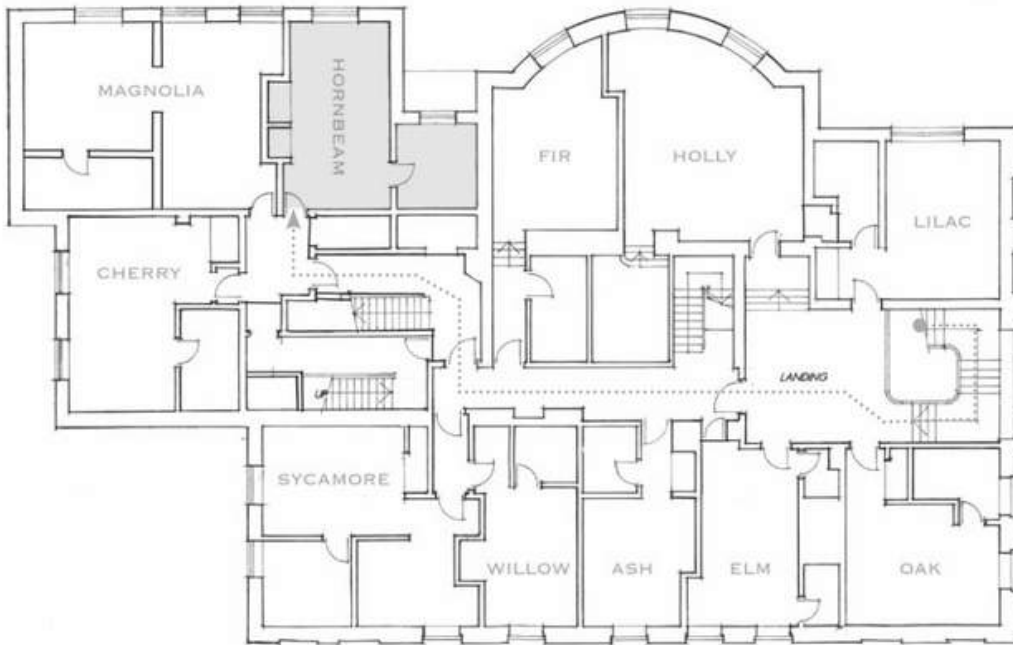
This elegant and grand room has high ceilings, king-size bed and bathroom with en suite bath and shower facilities.

Views from the large windows over the magnificent garden.

*Suitable for a cot.*

## Facilities:

Air conditioning, complimentary Wi-Fi, large flat screen TV, a luxurious mattress topper, tea and coffee making facilities, biscuits and sweets, bottled water, iron and ironing board, hair dryer and 24 hour room service.



# OAK MAIN HOUSE, FIRST FLOOR

## PREMIER ROOM

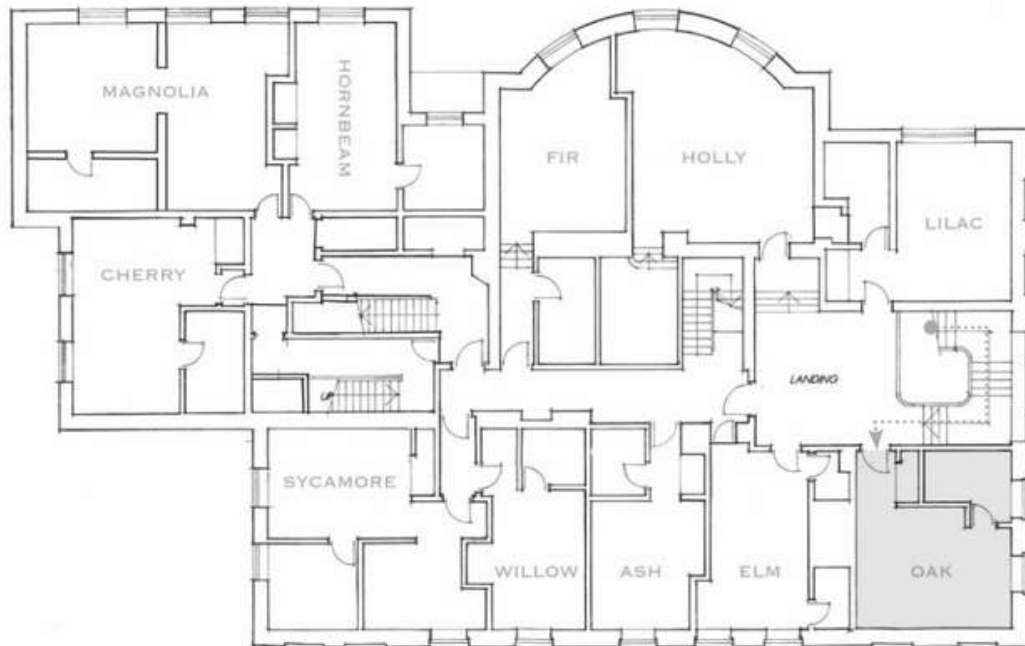
This large double bedroom is located in the oldest part of the hotel and has high ceilings, en suite bathroom with shower and a large window overlooking historic Fishpool Street and the main entrance.

This room can be set with either a king size bed or twin beds.

*Suitable for a cot or temporary single bed.*

## Facilities:

Air conditioning, complimentary Wi-Fi, large flat screen TV, a luxurious mattress topper, tea and coffee making facilities, biscuits and sweets, bottled water, iron and ironing board, hair dryer and 24 hour room service.



# FIR MAIN HOUSE, FIRST FLOOR

## LUXURY MANOR HOUSE ROOM

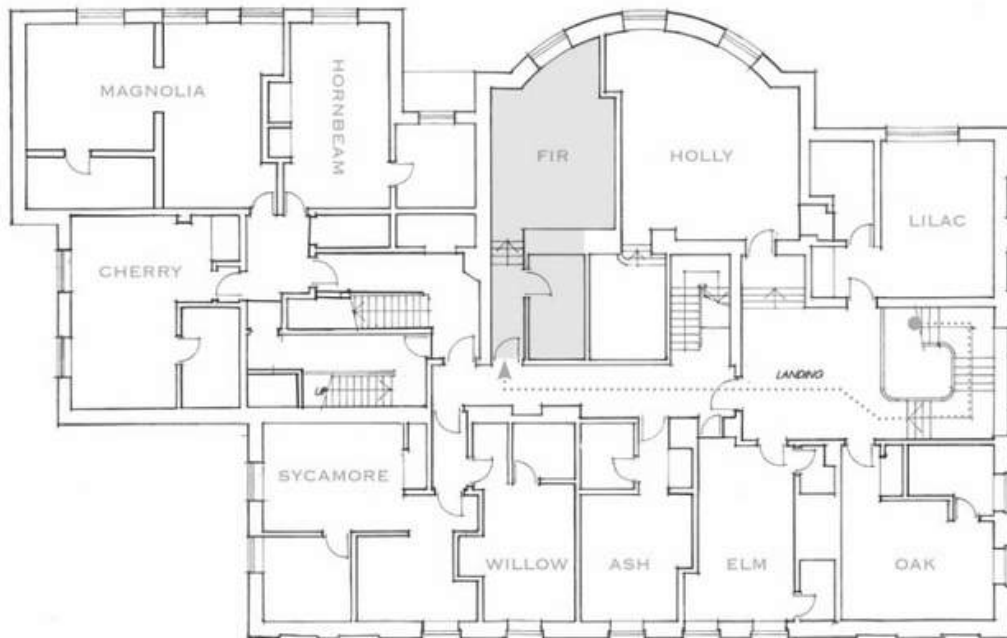
This elegant and grand room in the centre of the hotel has high ceilings, king-size bed and bathroom with en suite bath and shower facilities.

Views from the large windows and balcony over the magnificent gardens.

*Suitable for a cot or temporary single bed.*

## Facilities:

Air conditioning, complimentary Wi-Fi, large flat screen TV, a luxurious mattress topper, tea and coffee making facilities, biscuits and sweets, bottled water, iron and ironing board, hair dryer and 24 hour room service.



# LILAC MAIN HOUSE, FIRST FLOOR

## LUXURY MANOR HOUSE ROOM

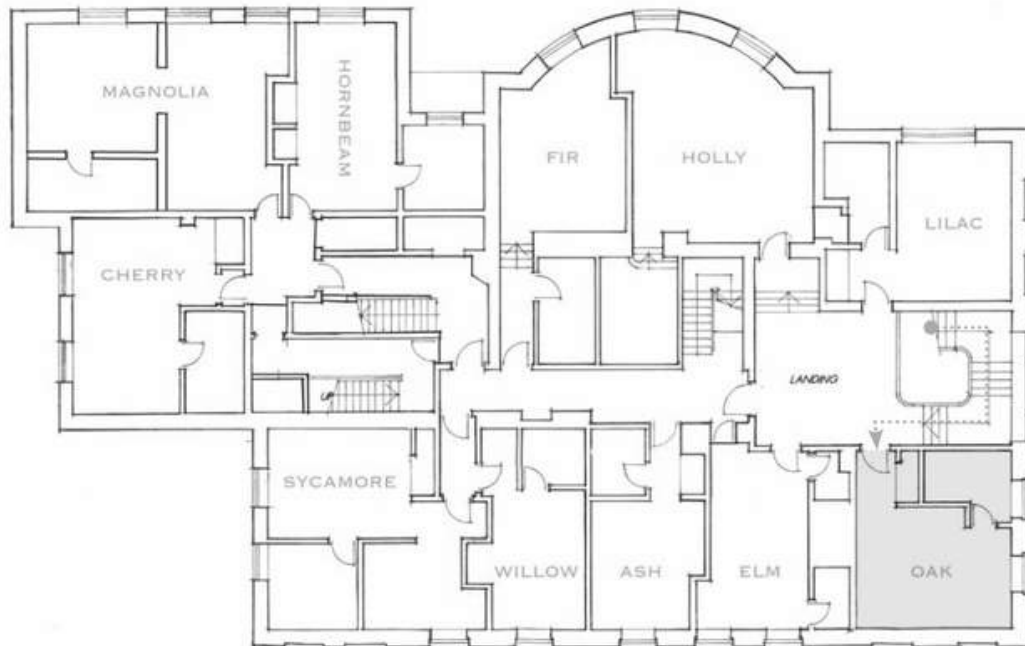
This elegant and grand room leads off the main landing in the centre of the hotel has high ceilings, king-size bed and bathroom with en suite bath and shower facilities.

Views from the large window over the magnificent garden.

*Suitable for a cot.*

## Facilities:

Air conditioning, complimentary Wi-Fi, large flat screen TV, a luxurious mattress topper, tea and coffee making facilities, biscuits and sweets, bottled water, iron and ironing board, hair dryer and 24 hour room service.



# WILLOW MAIN HOUSE, FIRST FLOOR

## DELUXE ROOM

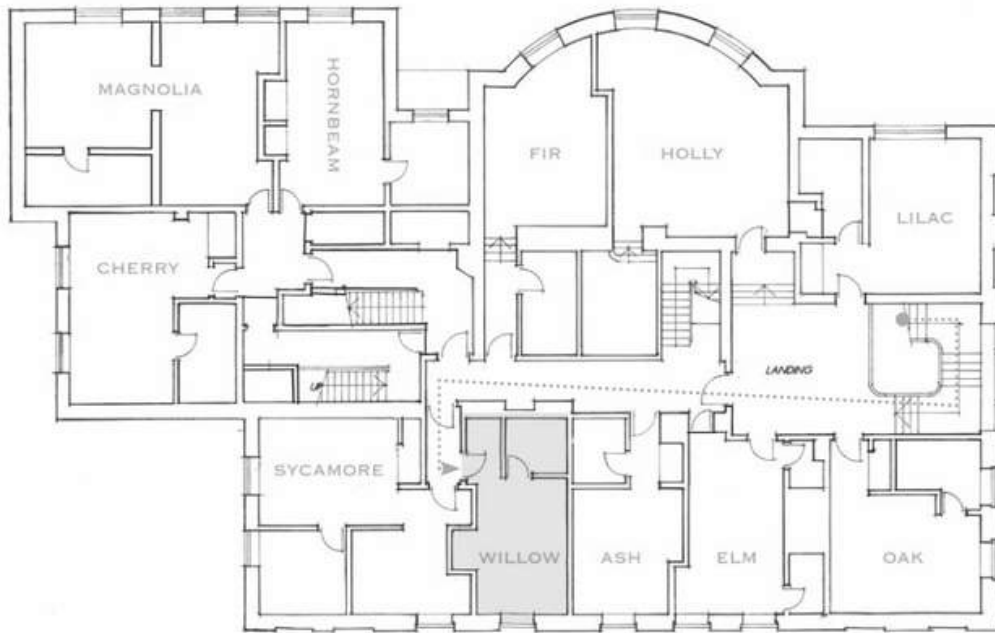
This charming double bedroom has high ceilings, large windows, modern en suite bathroom with shower, and views over the historic Fishpool Street.

This room can be used in conjunction with Sycamore as a family suite, for 4-6 people.

*No additional beds or cots can be accommodated.*

## Facilities:

Air conditioning, complimentary Wi-Fi, large flat screen TV, a luxurious mattress topper, tea and coffee making facilities, biscuits and sweets, bottled water, iron and ironing board, hair dryer and 24 hour room service.



# ELM MAIN HOUSE, FIRST FLOOR

## DELUXE ROOM

Located in the oldest part of the hotel on the first floor landing this room has a modern walk-in shower and separate toilet, high ceilings and large windows with views over historic Fishpool Street.

This room can be set with either a king size bed or twin beds.

*This room cannot accommodate extra beds or a cot.*

## Facilities:

Air conditioning, complimentary Wi-Fi, large flat screen TV, a luxurious mattress topper, tea and coffee making facilities, biscuits and sweets, bottled water, iron and ironing board, hair dryer and 24 hour room service.



# ASH MAIN HOUSE, FIRST FLOOR

## DELUXE ROOM

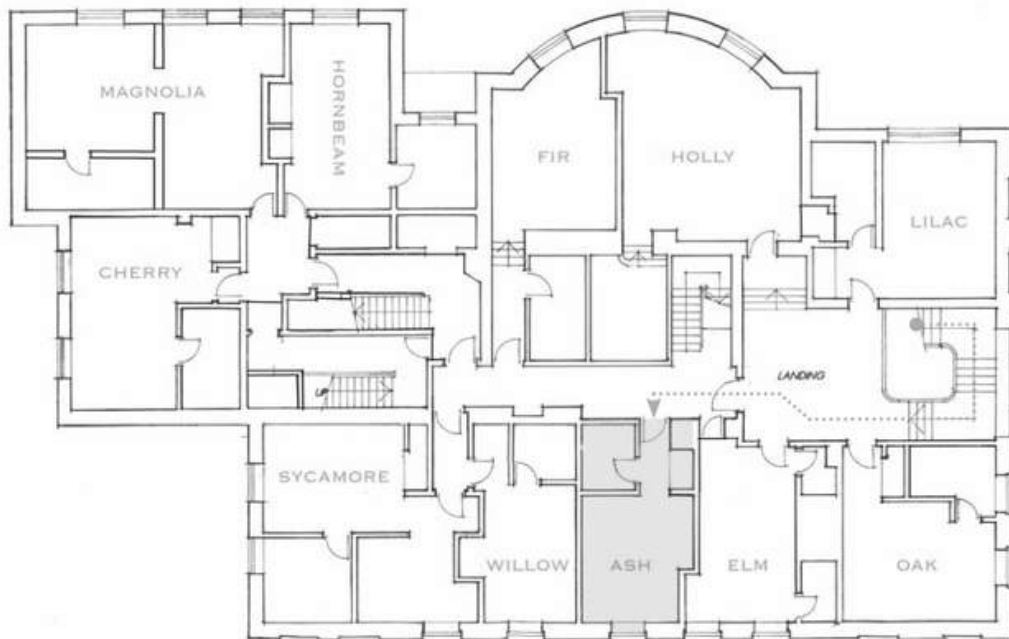
Located in the oldest part of the hotel on the first floor landing with a modern en suite bathroom with shower.

The room has high ceilings and large windows with views over the historic Fishpool Street.

*Suitable for a cot.*

## Facilities:

Air conditioning, complimentary Wi-Fi, large flat screen TV, a luxurious mattress topper, tea and coffee making facilities, biscuits and sweets, bottled water, iron and ironing board, hair dryer and 24 hour room service.



# ALDER MAIN HOUSE, SECOND FLOOR

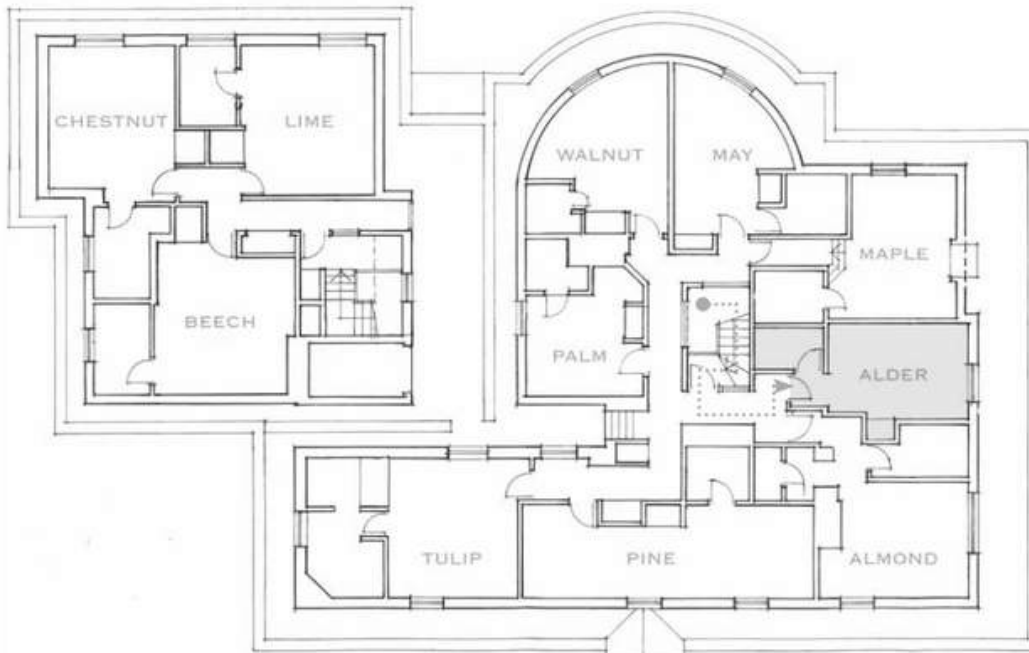
## DELUXE ROOM

Located in the oldest part of the hotel, this smaller double bedroom has a modern en suite bathroom with shower, and wonderful views over the nearby historic Fishpool Street.

*Not suitable for a cot or extra bed.*

## Facilities:

Air conditioning, complimentary Wi-Fi, large flat screen TV, a luxurious mattress topper, tea and coffee making facilities, biscuits and sweets, bottled water, iron and ironing board, hair dryer and 24 hour room service.



# PALM MAIN HOUSE, SECOND FLOOR

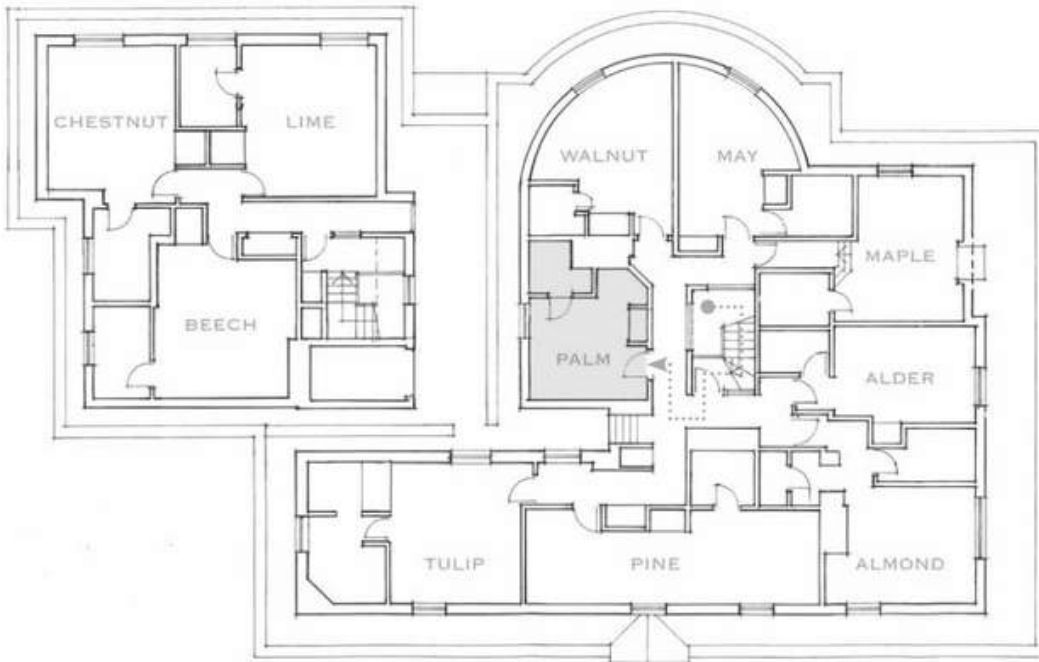
## DELUXE SINGLE ROOM

This charming single bedroom has a modern en suite shower room. And overlooks the historic Fishpool Street from its iconic window.

*Not suitable for a cot or extra bed.*

## Facilities:

Air conditioning, complimentary Wi-Fi, large flat screen TV, a luxurious mattress topper, tea and coffee making facilities, biscuits and sweets, bottled water, iron and ironing board, hair dryer and 24 hour room service.



# CHESTNUT MAIN HOUSE, SECOND FLOOR

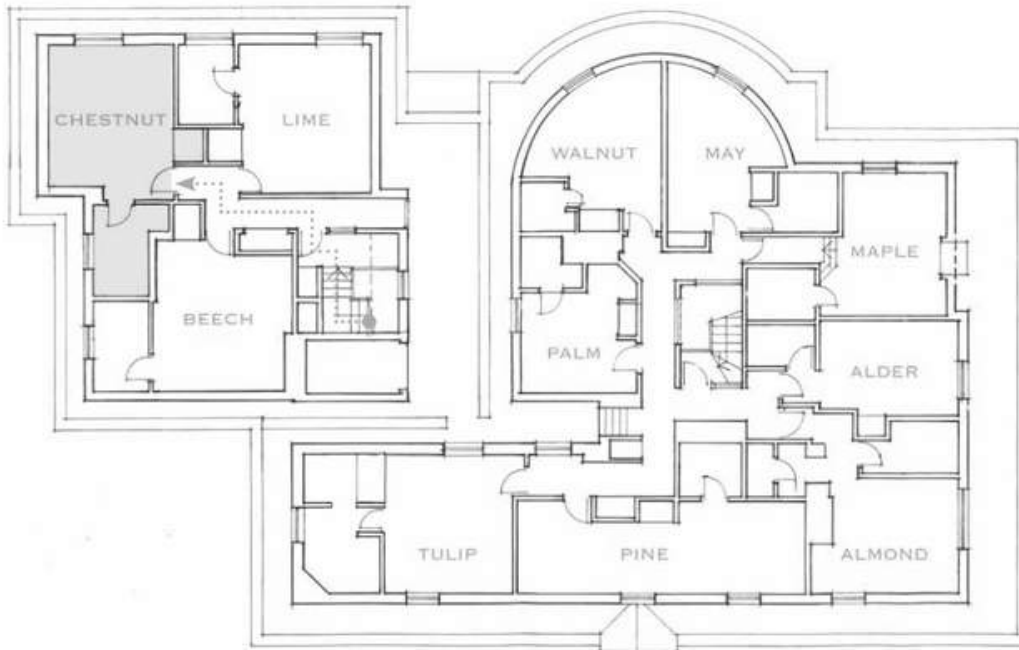
## PREMIER ROOM

This charming double bedroom has a king size bed, sloped ceilings, an en-suite bathroom with shower and an arched window overlooking the magnificent gardens and lake.

*Suitable for a cot.*

## Facilities:

Air conditioning, complimentary Wi-Fi, large flat screen TV, a luxurious mattress topper, tea and coffee making facilities, biscuits and sweets, bottled water, iron and ironing board, hair dryer and 24 hour room service.



# LIME MAIN HOUSE, SECOND FLOOR

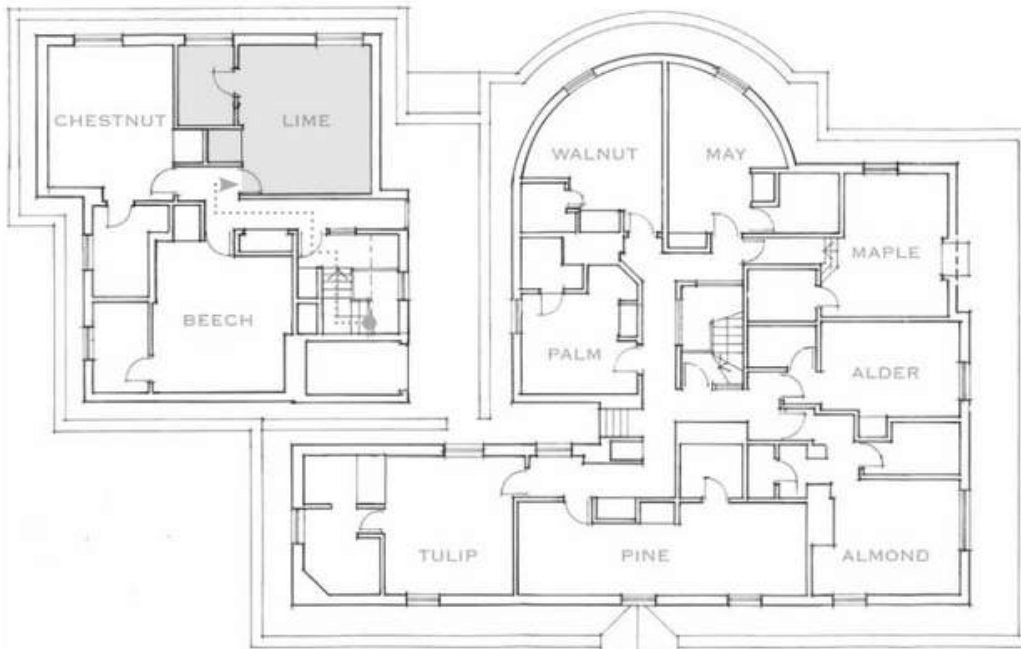
## PREMIER ROOM

This spacious double bedroom has a king size bed, sloped ceilings, an en suite bathroom with shower and an arched window overlooking the magnificent gardens and lake.

*Suitable for a cot.*

## Facilities:

Air conditioning, complimentary Wi-Fi, large flat screen TV, a luxurious mattress topper, tea and coffee making facilities, biscuits and sweets, bottled water, iron and ironing board, hair dryer and 24 hour room service.



# BEECH MAIN HOUSE, SECOND FLOOR

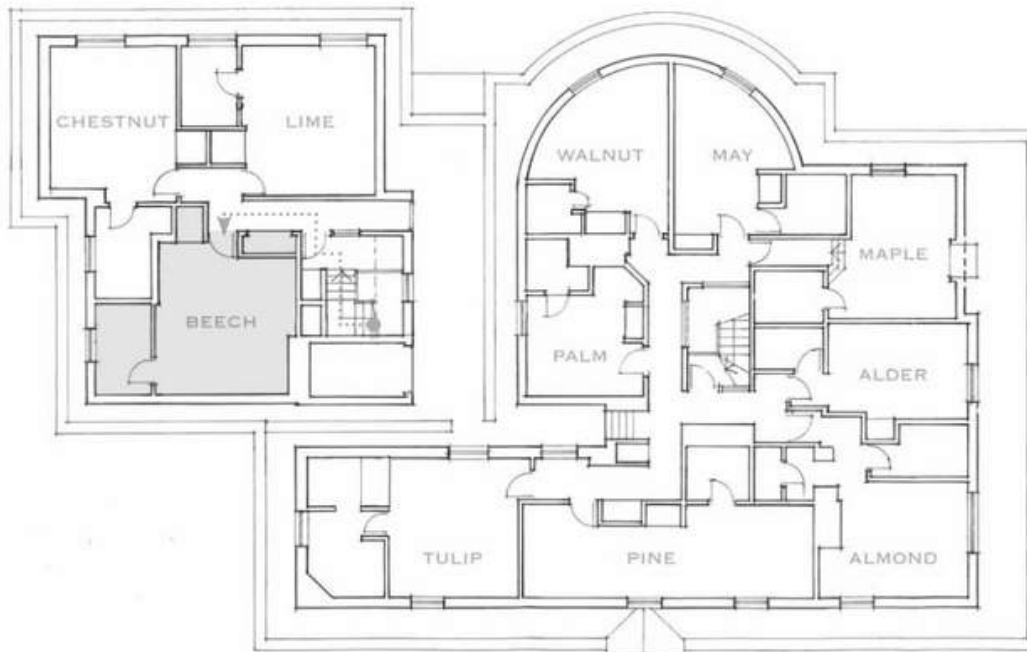
## PREMIER ROOM

This charming double bedroom has a king size bed, sloped ceilings, an en suite bathroom with shower and arched windows overlooking historic Fishpool Street.

*Suitable for a cot.*

## Facilities:

Air conditioning, complimentary Wi-Fi, large flat screen TV, a luxurious mattress topper, tea and coffee making facilities, biscuits and sweets, bottled water, iron and ironing board, hair dryer and 24 hour room service.



# TULIP MAIN HOUSE, SECOND FLOOR

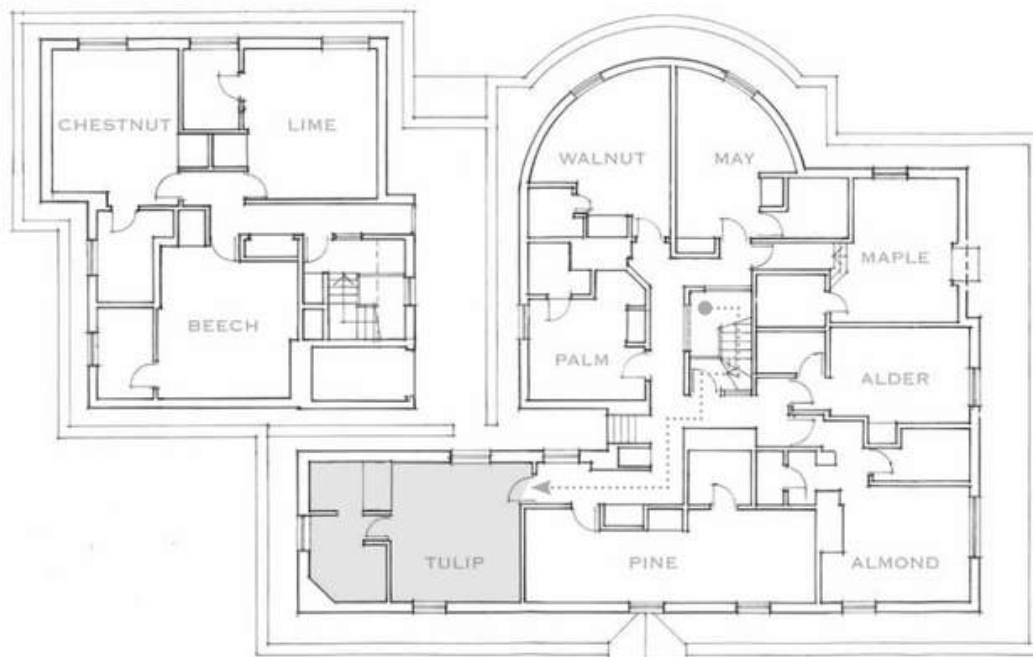
## PREMIER ROOM

This contemporary double bedroom is in the older part of the hotel. It has a king size bed, sloped ceilings, an en suite bathroom with shower and arched windows overlooking historic Fishpool Street.

*This room has space for two cots and/or a temporary single bed.*

## Facilities:

Air conditioning, complimentary Wi-Fi, large flat screen TV, a luxurious mattress topper, tea and coffee making facilities, biscuits and sweets, bottled water, iron and ironing board, hair dryer and 24 hour room service.



# PINE MAIN HOUSE, SECOND FLOOR

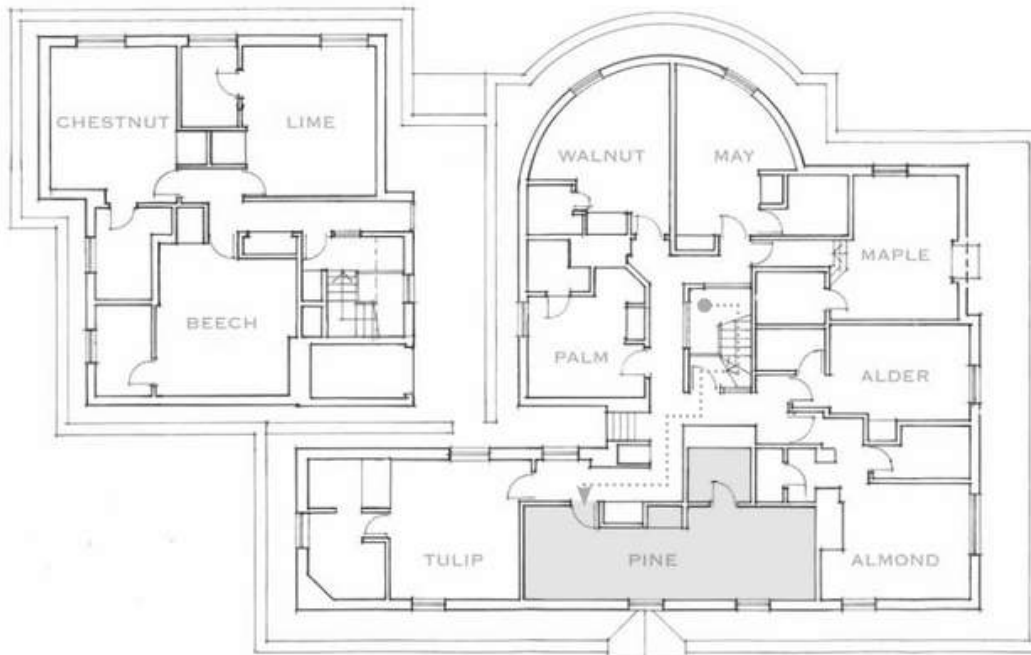
## PREMIER ROOM

This charming double bedroom has a king size bed, sloped ceilings, an en suite bathroom with shower and arched windows overlooking historic Fishpool Street.

*This room has a single sofa bed and space for a cot.*

## Facilities:

Air conditioning, complimentary Wi-Fi, large flat screen TV, a luxurious mattress topper, tea and coffee making facilities, biscuits and sweets, bottled water, iron and ironing board, hair dryer and 24 hour room service.



# ALMOND MAIN HOUSE, SECOND FLOOR

## PREMIER ROOM

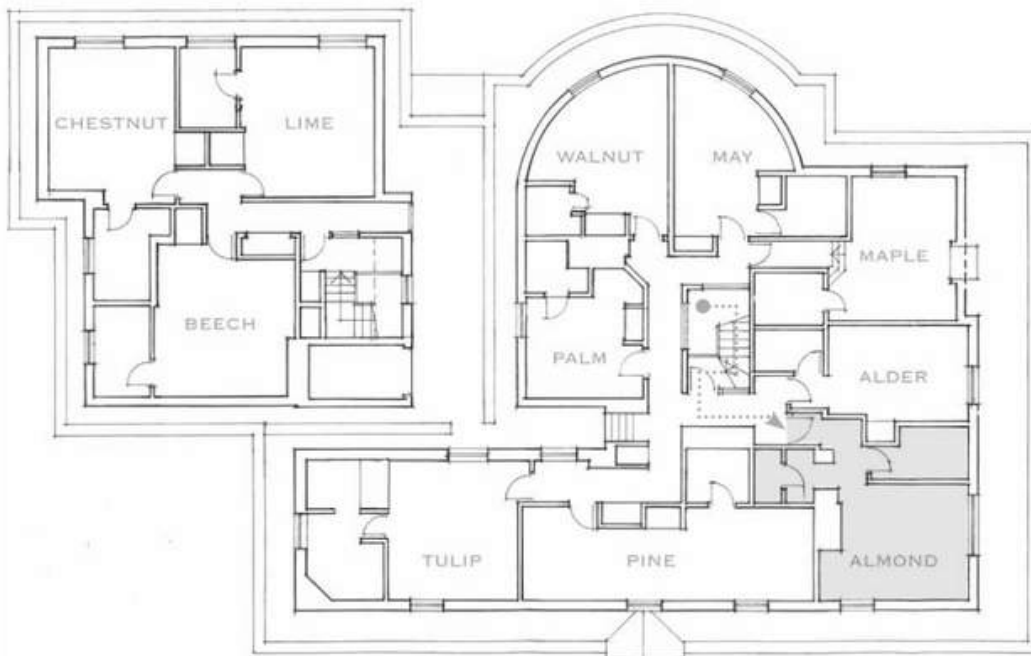
This charming double bedroom is in the oldest part of the hotel with sloped ceilings, exposed beams, an en suite bathroom with shower and arched windows overlooking historic Fishpool Street.

This room can be set with either a king size bed or twin beds.

*This room has space for a cot.*

## Facilities:

Air conditioning, complimentary Wi-Fi, large flat screen TV, a luxurious mattress topper, tea and coffee making facilities, biscuits and sweets, bottled water, iron and ironing board, hair dryer and 24 hour room service.



# MAPLE MAIN HOUSE, SECOND FLOOR

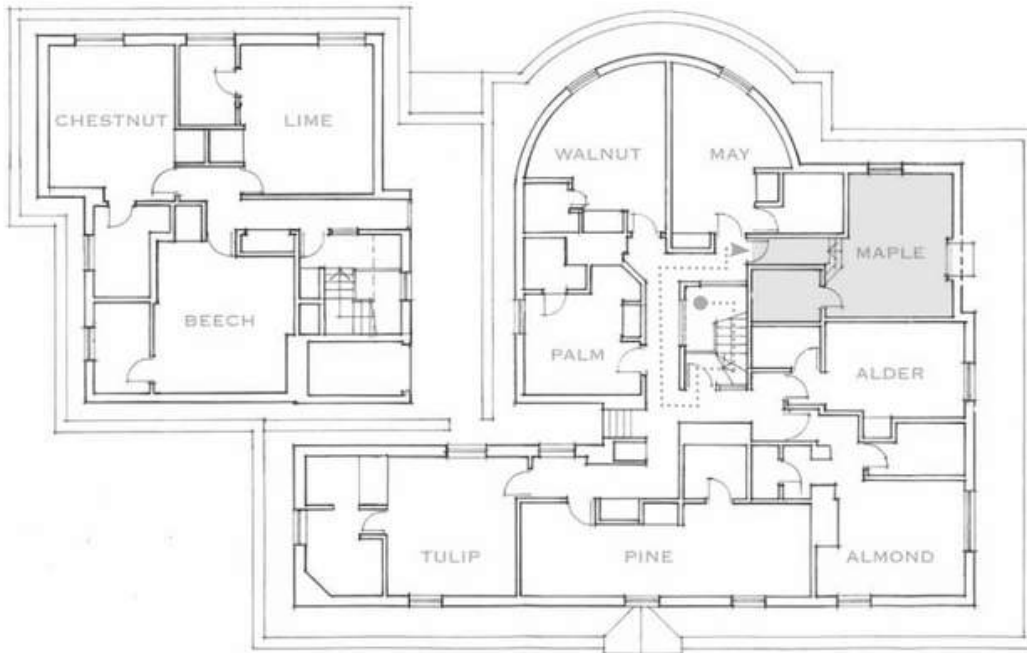
## PREMIER ROOM

This charming double bedroom has sloped ceilings, an en suite bathroom with shower and an arched window overlooking the magnificent garden and lake.

*Not suitable for additional beds or cot.*

## Facilities:

Air conditioning, complimentary Wi-Fi, large flat screen TV, a luxurious mattress topper, tea and coffee making facilities, biscuits and sweets, bottled water, iron and ironing board, hair dryer and 24 hour room service.



# MAY MAIN HOUSE, SECOND FLOOR

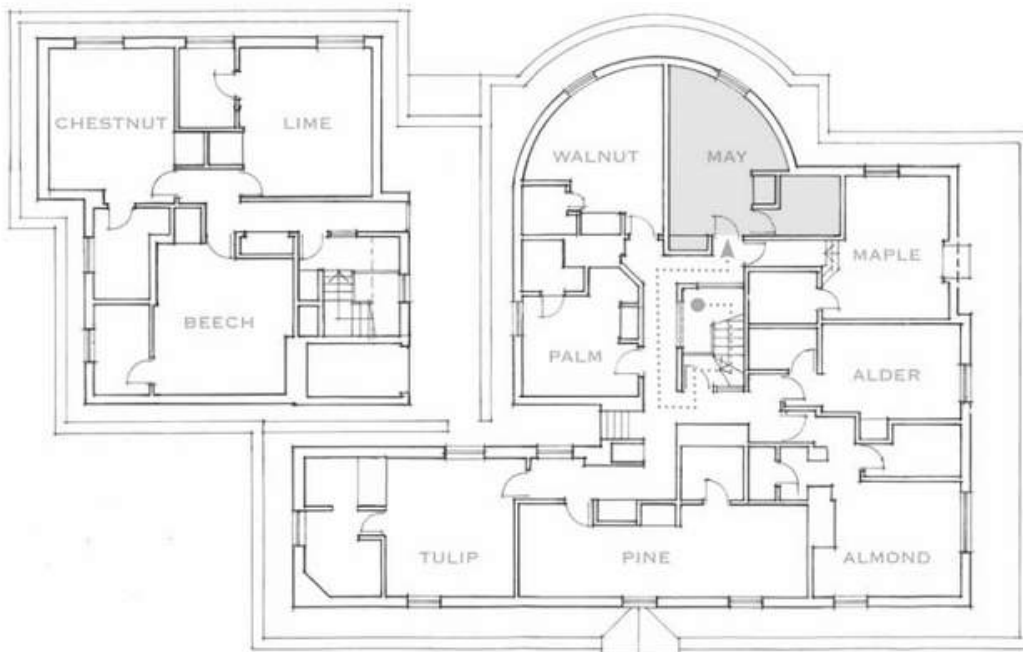
## PREMIER ROOM

This charming double bedroom has a king size bed, sloped ceilings, an en suite shower room and an arched window overlooking the stunning garden and lake.

*Not suitable for additional beds or cot.*

## Facilities:

Air conditioning, complimentary Wi-Fi, large flat screen TV, a luxurious mattress topper, tea and coffee making facilities, biscuits and sweets, bottled water, iron and ironing board, hair dryer and 24 hour room service.



# WALNUT MAIN HOUSE, SECOND FLOOR

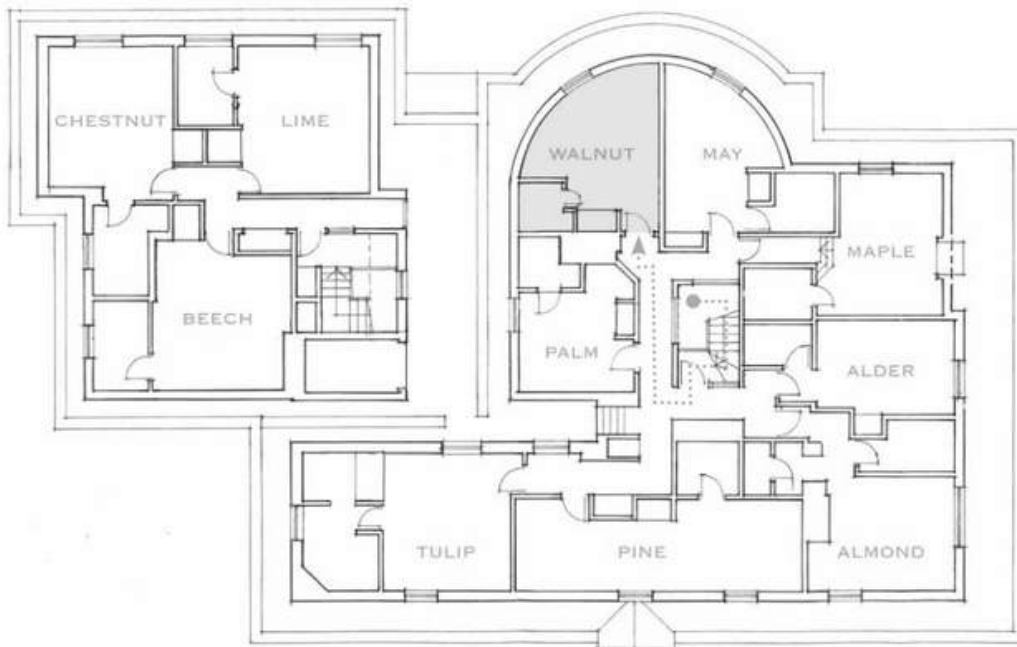
## PREMIER ROOM

This charming double bedroom has a king size bed, sloped ceilings, an en suite shower room and an arched window overlooking the magnificent garden and lake.

*Not suitable for additional beds or cot.*

## Facilities:

Air conditioning, complimentary Wi-Fi, large flat screen TV, a luxurious mattress topper, tea and coffee making facilities, biscuits and sweets, bottled water, iron and ironing board, hair dryer and 24 hour room service.



# POPLAR GARDEN WING, GROUND FLOOR

## LUXURY GARDEN WING ROOM

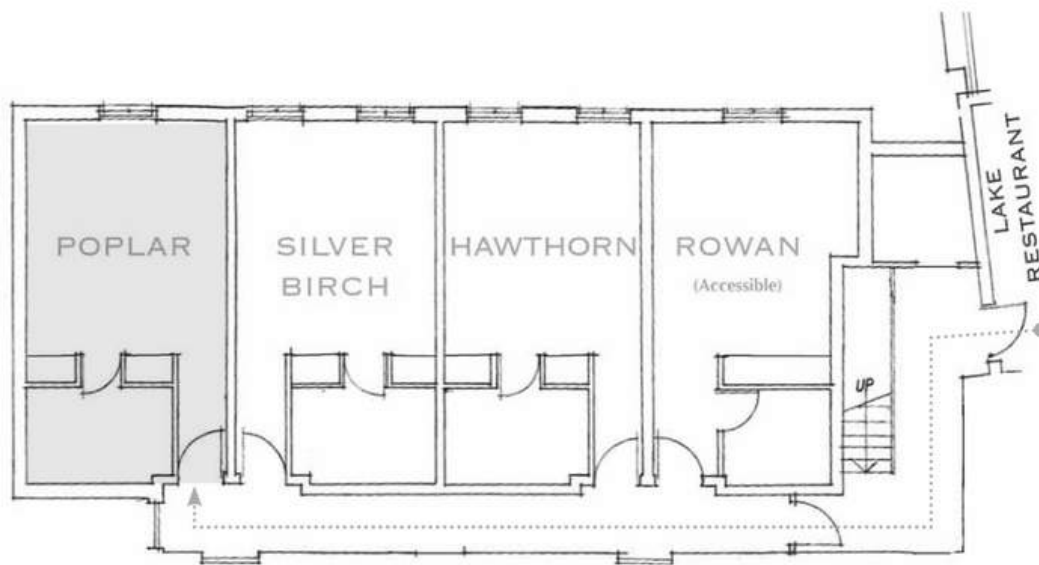
This stylish bedroom has a king size bed, a large modern en suite with a bath and separate walk-in shower, with views overlooking the magnificent garden and lake.

The Garden Wing has a separate entrance with parking close by.

*This is an adult only room.*

## Facilities:

Air conditioning, complimentary Wi-Fi, large flat screen TV, a luxurious mattress topper, tea and coffee making facilities, biscuits and sweets, bottled water, iron and ironing board, hair dryer and 24 hour room service.



# SILVER BIRCH GARDEN WING, GROUND FLOOR

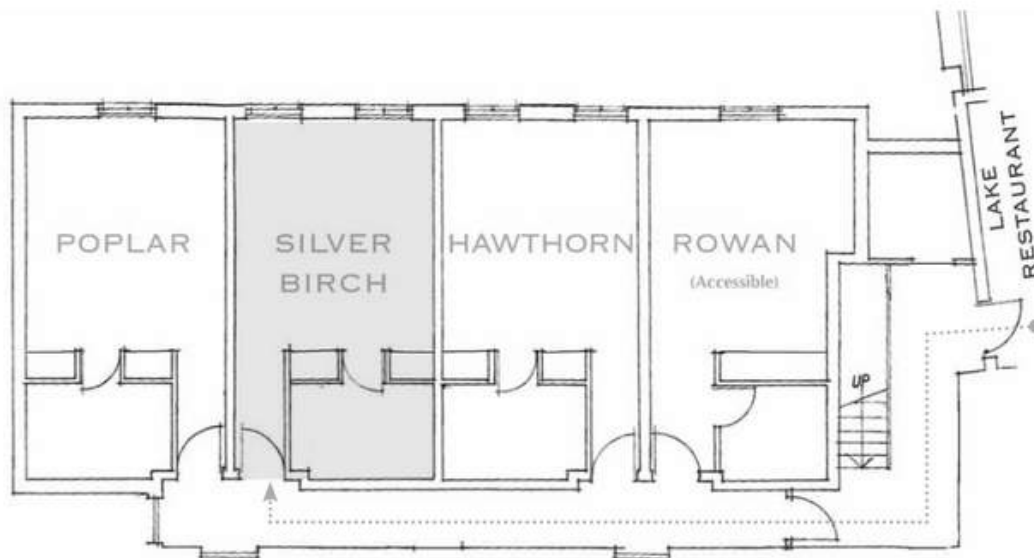
## FOUR POSTER GARDEN ROOM

This stylish bedroom has a king size bed, a large modern en suite with a bath and separate walk-in shower, with views overlooking the magnificent garden and lake. The Garden Wing has a separate entrance with parking close by.

*This is an adult only room.*

## Facilities:

Air conditioning, complimentary Wi-Fi, large flat screen TV, a luxurious mattress topper, tea and coffee making facilities, biscuits and sweets, bottled water, iron and ironing board, hair dryer and 24 hour room service.



# HAWTHORN GARDEN WING, GROUND FLOOR

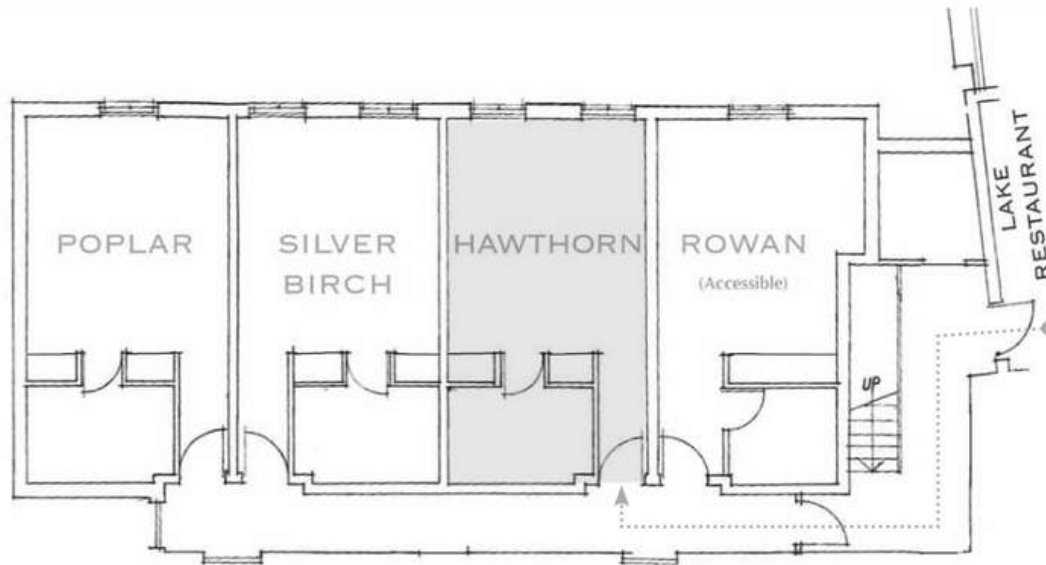
## LUXURY GARDEN WING ROOM

This stylish bedroom has a king size bed, a large modern en suite with a bath and separate walk-in shower, with views overlooking the magnificent garden and lake. The Garden Wing has a separate entrance with parking close by.

*This is an adult only room.*

## Facilities:

Air conditioning, complimentary Wi-Fi, large flat screen TV, a luxurious mattress topper, tea and coffee making facilities, biscuits and sweets, bottled water, iron and ironing board, hair dryer and 24 hour room service.



# ROWAN GARDEN WING, GROUND FLOOR

## ACCESSIBLE / LUXURY GARDEN WING ROOM

This attractive bedroom has a king size bed that can be converted to twin singles and has stunning views over the garden and lake.

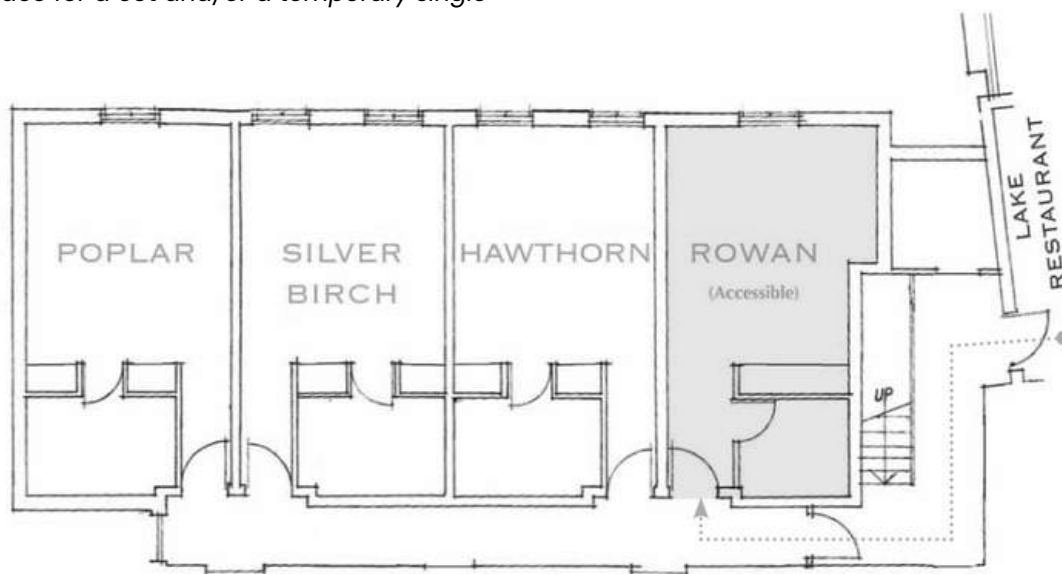
The room has wheel chair access from the ground floor of the main hotel and there is a deaf-alarm available.

The en suite bathroom has a walk-in shower with shower seat, emergency cord and handrails. The Garden Wing has a separate entrance with parking close by.

*This room can either be a double or twin and has space for a cot and/or a temporary single bed.*

## Facilities:

Air conditioning, complimentary Wi-Fi, large flat screen TV, a luxurious mattress topper, tea and coffee making facilities, biscuits and sweets, bottled water, iron and ironing board, hair dryer and 24 hour room service.



# DAMSON GARDEN WING, LOWER GROUND FLOOR

## LUXURY GARDEN WING ROOM

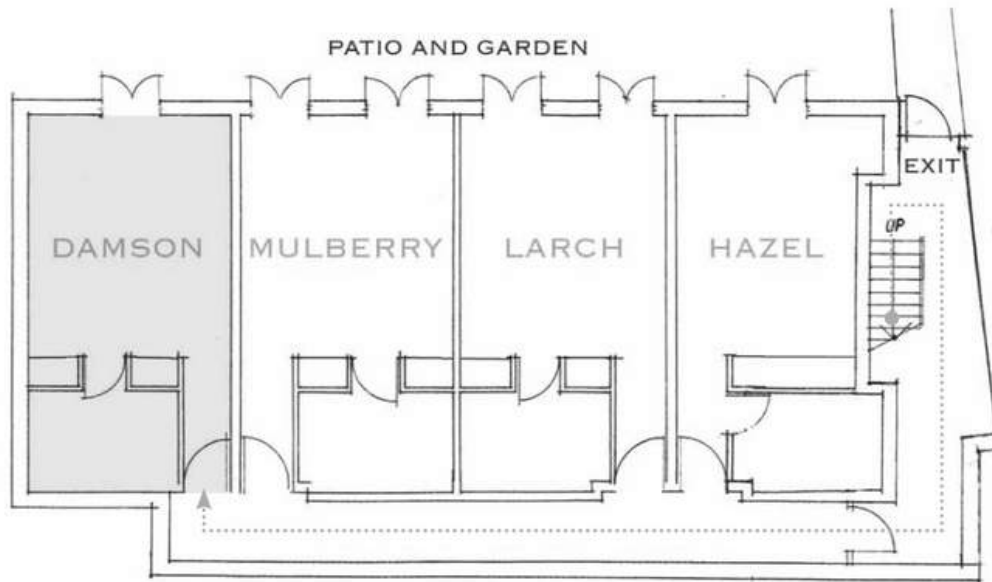
This stylish bedroom has a king size bed, a large modern en suite with a bath and separate walk-in shower. Doors lead outside onto a private patio with seating and direct access to the garden.

The Garden Wing has a separate entrance with parking close by.

*This is an adult only room.*

## Facilities:

Air conditioning, complimentary Wi-Fi, large flat screen TV, a luxurious mattress topper, tea and coffee making facilities, biscuits and sweets, bottled water, iron and ironing board, hair dryer and 24 hour room service.



# MULBERRY GARDEN WING, LOWER GROUND FLOOR

## LUXURY GARDEN WING ROOM

This beautifully-designed bedroom has a four poster king size bed, and large modern en suite with separate bath and walk-in shower.

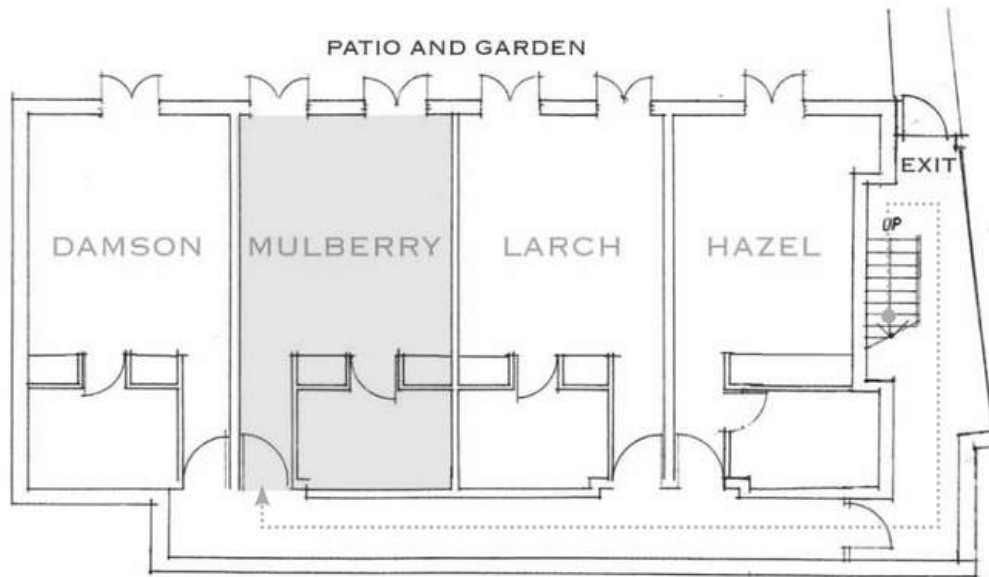
Doors open onto a private patio with seating and direct access to the garden.

The Garden Wing has a separate entrance with parking close by.

*This is an adult only room.*

## Facilities:

Air conditioning, complimentary Wi-Fi, large flat screen TV, a luxurious mattress topper, tea and coffee making facilities, biscuits and sweets, bottled water, iron and ironing board, hair dryer and 24 hour room service.



# LARCH GARDEN WING, LOWER GROUND FLOOR

## LUXURY GARDEN WING ROOM

This beautifully-designed bedroom has a four poster king size bed, and large modern en suite with separate bath and walk-in shower.

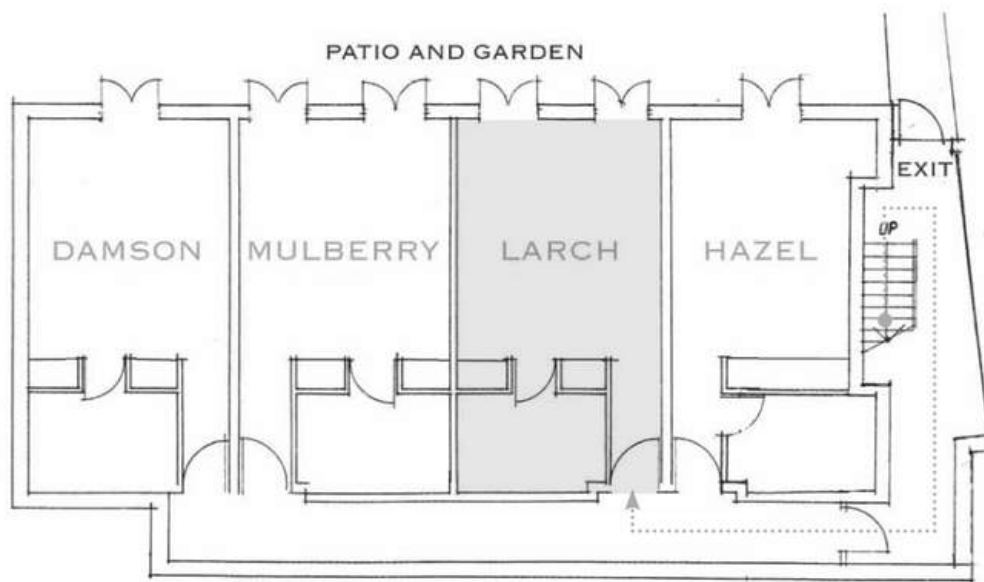
Doors open onto a private patio with seating and direct access to the garden.

The Garden Wing has a separate entrance, with parking close by.

*This is an adult only room.*

## Facilities:

Air conditioning, complimentary Wi-Fi, large flat screen TV, a luxurious mattress topper, tea and coffee making facilities, biscuits and sweets, bottled water, iron and ironing board, hair dryer and 24 hour room service.



# HAZEL

# GARDEN WING, LOWER GROUND FLOOR

## LUXURY GARDEN WING ROOM

This stylish bedroom has a king size bed, a large modern en suite with a bath and separate walk-in shower.

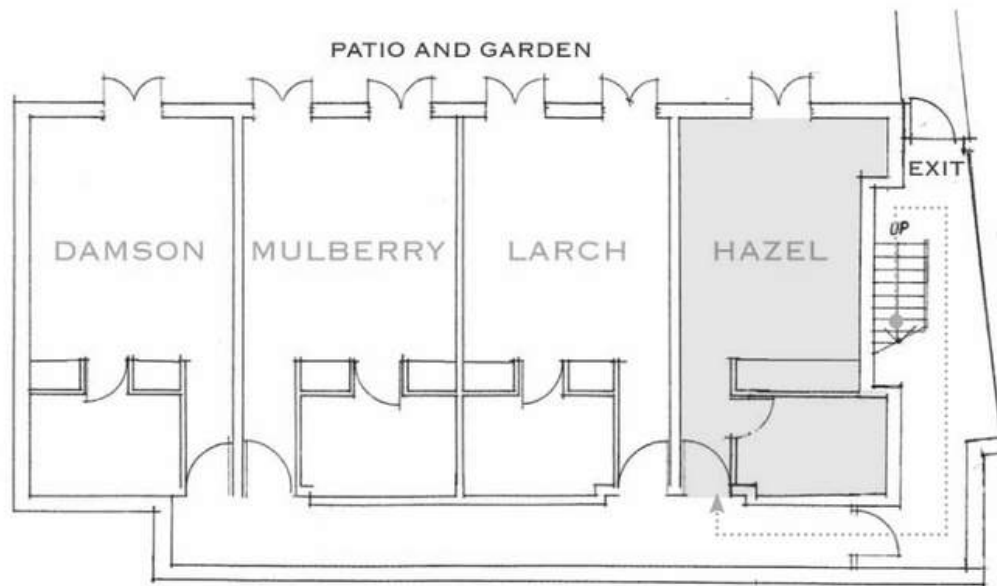
Doors open out onto a private patio with seating and direct access to the garden.

The Garden Wing has a separate entrance, with parking close by.

*This is an adult only room.*

## Facilities:

Air conditioning, complimentary Wi-Fi, large flat screen TV, a luxurious mattress topper, tea and coffee making facilities, biscuits and sweets, bottled water, iron and ironing board, hair dryer and 24 hour room service.



Imagery Credits: [Gabi Eduard Photography](#), [Emma Hurley Photography LTD](#), [Terezie Faflikova](#)  
Brochure Design by [Deborah Cisternino](#)



St Michael's Manor Ltd, Fishpool Street, St Albans, Hertfordshire AL3 4RY  
T: 01727 864 444 • F: 01727 848 909 • [reception@stmichaelsmanor.com](mailto:reception@stmichaelsmanor.com) • [www.stmichaelsmanor.com](http://www.stmichaelsmanor.com)

