



WARE  PRIORY

*One of Hertfordshire's  
Premier wedding venues*

...WHERE THE PAST AND PRESENT UNITE





# The Venue

TAILORED TO YOU

Finding the right wedding venue can be one of the most challenging parts of your wedding planning. At Ware Priory we tailor your wedding especially for you so that you can enjoy your perfect day.

Ware Priory offers two fantastic venues in which to hold your wedding or celebration. Whether you are looking for a historic or contemporary setting, wanting a civil ceremony, a wedding reception or indeed both, then we have the picture perfect backdrop for your special occasion.



# The Arrival

DO IT IN STYLE

However you choose to get here, we know you want to arrive in style. We have plenty of space for pictures of you and your chosen transport at the front of the estate or you may wish to arrive by boat along the river....

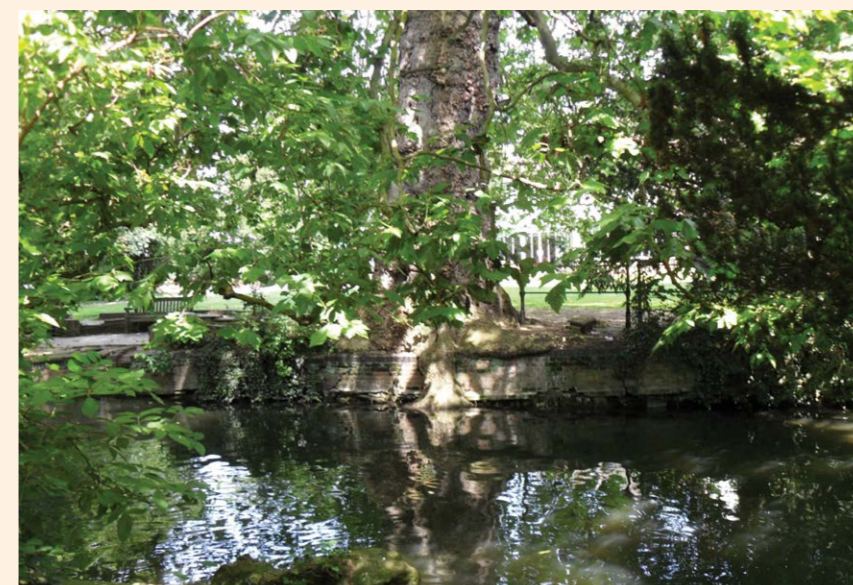




## PERFECTLY LOCATED

Ware Priory is located on the market town of Ware and is easily accessible from East Hertfordshire and West Essex. It's tranquil riverside setting and seven acres of picturesque grounds makes it a very beautiful setting for your special day.

Perhaps you are planning to get married immediately or you are looking slightly further ahead, maybe you are planning a spectacular celebration or an intimate gathering with close friends and family. Whatever your decision, your wedding is one of the most treasured, special and important days of your life and our experienced and dedicated team will help you plan your day ensuring it runs as smoothly as possible.



# The Ceremony

## DIGNITY & HISTORY

If your ceremony is to take place at Ware Priory we know that our rooms provide the dignity and history so important for this special occasion. The Priory Hall, the Hadsley Room, the Conservatory and the Council Chamber are each licensed for a civil ceremony, so there is plenty of choice for your service.

Each room has plenty of natural light, historic features, high ceilings and period décor which adds to the occasion and creates an unforgettable atmosphere and environment for your special day.





# The Photographs



## CAPTURE THE MOMENT

Following your ceremony, you can enjoy a drinks reception in our wonderful riverside gardens which also provide the perfect setting for your photographs, whether in front of the Priory itself, in the beautiful landscaped gardens or perhaps on one of our bridges overlooking the river.

If you are looking for the ideal spot for photographs then we have several to choose from. Arriving at the front of the Priory with the wedding car, signing the register in front of the stained glass windows in the Priory Hall or using the 14th Century refectory table in our late-medieval Hadsley Room.

There is that all-important confetti shot under the wisteria archway and several idyllic spots in the gardens or by the river.





# *The Wedding Breakfast: Ware Priory*



## PLENTY OF CHOICE

Your wedding breakfast will be served in your chosen room and can be a formal sit-down meal, an informal buffet or perhaps a barbecue, all prepared and served by our highly skilled in-house catering partners.

We can accommodate a small gathering in an intimate setting or a large party of up to 140 of your guests

The Conservatory offers a bright spacious interior with an intimate atmosphere at night. Large French windows open on to the gardens with access to the River Lea, where wooden bridges access the Priory Island.

The Priory Hall is a room full of historical character creating a unique atmosphere for your reception. It's stained glass windows and mid-Victorian murals provide a traditional theme and the beautiful French windows open on to the riverside gardens.

The Hadsley Room is part of the Lady Suite, and is situated on the first floor of the Priory in what was originally believed to be the Abbots Lodgings. It boasts a superb example of a crown post roof and has a vaulted ceiling. The large refectory table in this room dates back to the 14th Century and is believed to be from the original Friary. It provides a more intimate atmosphere for smaller celebrations.



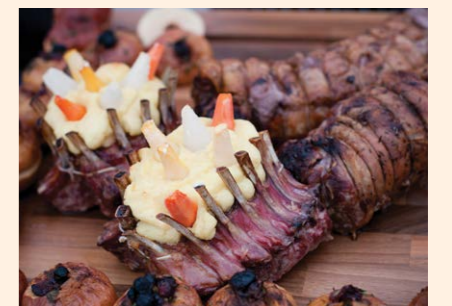
# *The Wedding Breakfast: Fletcher's Lea*



## BY THE RIVER

For a contemporary setting we have the Riverside Suite situated within Fletcher's Lea. With its modern and spacious surroundings, it is an ideal larger venue for wedding ceremonies, receptions and celebration parties and can accommodate up to 150 guests for dining and 220 guests for a buffet setting. Fletcher's Lea is a standalone building which affords exclusivity as all catering and bar facilities are housed within it. Additionally, it has its own private terrace offering views of the River Lea as well as access to all the gardens within the Priory Estate.





AWARD-WINNING

At Ware Priory we can cater for your perfect wedding reception or celebratory party. You can rely on our friendly and professional staff to create an event of exceptional quality. That is because Ware Priory's exclusive catering partner is Seasoned, a company with over 30 years' experience in the events industry. Seasoned not only guarantees to provide you with superb food served in style, but they also act as your event management team, ensuring that every aspect of your day runs as smoothly as possible. Whatever your requirements, you can rest assured that they will be delivered to the highest standards.

*The Catering*





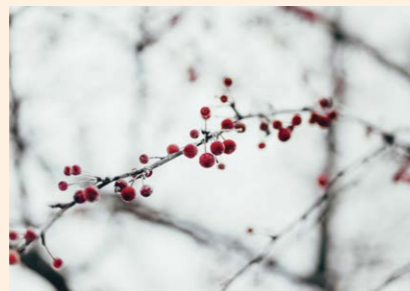
# A venue for all seasons

Ware Priory is a beautiful venue to choose whichever season you decide to tie the knot. Our grounds have been lovingly cared for so that they look stunning whatever the weather. Our Events Team are on hand to help you theme your catering and décor to whatever time of year you wish to wed.

## WINTER

There is nothing more magical than a Winter Wedding, whether a lavish affair with a large number of guests or a much more intimate setting.

If you are looking for a Christmas Wedding then we can add some simple touches, such as mistletoe above the door, a fizzy winter cocktail or a warming mulled wine when your guests arrive. If you are lucky enough to get a light dusting of snow our gardens are ideal for your photos, although snowfall cannot be guaranteed!



## SUMMER

In the Summer why not choose some outdoor entertainment or garden games to make the most of the warm evenings and beautiful grounds. We offer a Barbeque option which makes a delicious alternative to a formal dinner. How about some Summer cocktails to add something unique to your day.



## SPRING

Spring is a lovely time of year with many flowers in bloom, baby ducks on the river, sunshine and longer days. Your chosen room can be decorated with vibrant Spring flowers to make the most of the season and the surroundings.



## AUTUMN

The Ware Priory grounds in Autumn look stunning with a wide array of colourful trees and planters. To complement this choose warming pumpkin dishes and conker themed centrepieces for impact.





## The Details



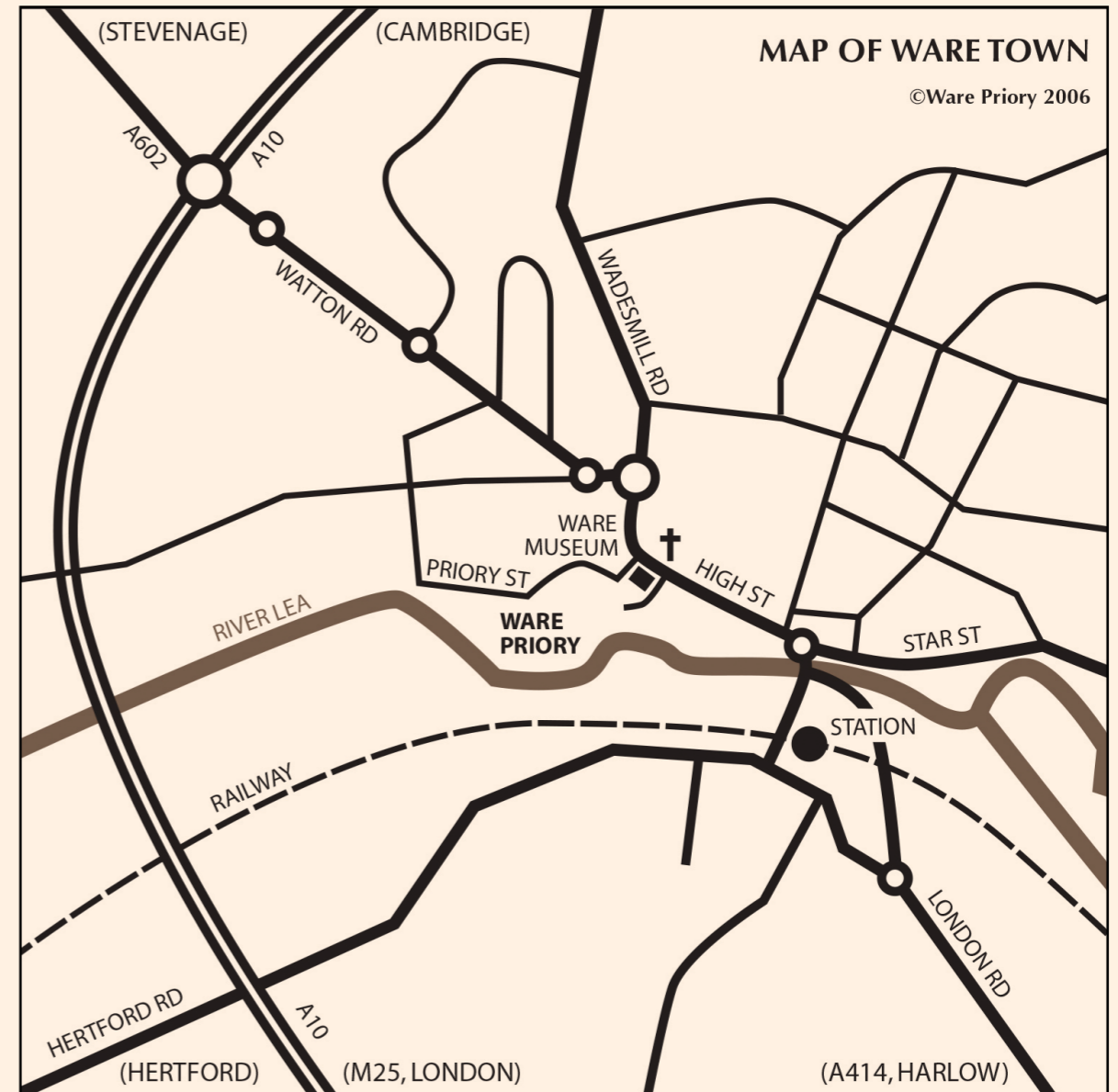
The function rooms that are licensed for civil ceremonies vary in size and character and can accommodate a small, intimate number or up to 150 guests for a wedding breakfast. Our dedicated wedding co-ordinators will recommend some of our experienced suppliers to help you set the scene, and guide you through our menus to help you select the most delicious dishes and the most appropriate wines.

### YOUR WEDDING DAY WILL INCLUDE THE FOLLOWING:

- Choice of ceremony room
- Use of the Priory and grounds
- Reception room
- Welcome drink for each guest
- Three-course wedding breakfast
- Specially selected wines
- A glass of sparkling wine for your speeches
- Cake knife and stand
- Table plan stand
- White table linen, crockery and glassware
- Evening buffet
- A dedicated events manager to host the day
- Silver service in-house bar and waiting staff

Free parking for up to 55 vehicles

## The Location





## WARE PRIORY

High Street, Ware, Hertfordshire SG12 9AL Telephone: 01920 460316  
Email: [events@warepriory.co.uk](mailto:events@warepriory.co.uk) Website: [www.warepriory.co.uk](http://www.warepriory.co.uk)

 @warepriory  warepriory

