













Overview of Room Capacities

	PAGE									Dimensions (metres)				
		Banquet	Dinner Dance	Reception Drinks	Buffet	Classroom	Boardroom	Concert	Cabaret	L Length	W Width	H Height	Natural Daylight	A/C Air Con
eighteen71	5	-	-	120	120 (standing)	-	-	-	-	18	10	2.3	✓	✓
The Courtyard	6	130	80	150	150 (standing)	-	20	30 (restricted view)	80 (restricted view)	14	14	2.6	✓	✗
Wintonian Room	9	70	60	120	120 (standing)	20	30	40	30	17.5	8	3.73	✓	✗
Conference Chamber	10	-	-	-	-	160	-	160	-	17.5	7.5	6.19	✗	✓
King Charles	12	100	80	150	120	75	60	150	80	15	9	10	✓	✗
Keats Room	12	20	-	20	20	12	18	20	-	8.3	4.8	-	✓ (limited)	✗
Bapsy Hall	14	300	260	600	300	180	100	620	200	23	13	10	✓	✓
Mayor's Parlour	17	20	-	30	20	8	18	25	-	8.5	5.5	4.9	✓	✗
Eversley Room	18	20	-	40	25	16	20	30	25	7	5	2.3	✓	✗
Wykeham Room	19	20	-	40	25	16	20	40	25	8	6	3	✓	✗
Kingsgate Room	19	-	-	-	-	6	12	-	-	5.2	3.2	2.4	✓	✗
Walton Suite	22	80	60	120	80	60	60	100	60	13.25	9	5.3	✓	✓

Disabled Access - except for Mayor's Parlour, Kingsgate Room, and Wykeham Room

Welcome

Guildhall Winchester is a magnificent Victorian building in the heart of the city which provides the perfect setting for a unique, stylish and unusual venue to make your event unforgettable.

We offer an outstanding selection of unique and adaptable rooms available for a variety of events and occasions. The creativity of the Guildhall Team allows for a truly memorable experience.

If you have any questions or if you would like to arrange a time to come and have a look around please don't hesitate to contact one of our dedicated Event Managers on: **01962 840 820**
or email: **guildhall@winchester.gov.uk**

We look forward to welcoming you to Guildhall Winchester very soon.



Day Delegate Packages

Take the stress out of planning your next meeting or conference with our day delegate package, offering the complete corporate meeting experience.

By selecting one of our delegate packages you can ensure that all areas of your event with us have been catered for and be confident that you are receiving the highest possible standards.

Alternatively we offer day or evening room hire rates and can create a bespoke package for personal requirements. Please contact the team for more details or refer to our website.

Private Parties

With a choice of suites to accommodate parties of 20 to 600 or more, there's room for everyone to join in the fun. The food is fresh from the fabulous kitchens of the Guildhall. The service...that's easy, it doesn't come any better or more professional.

As for everything else... you can leave that to us too. We will theme it. We will decorate it. We can even organise the entertainment.

Seasonal Events

The delightfully diverse facilities at the Guildhall make our venue the perfect location for summer and Christmas parties and a full calendar of other events throughout the year.



Bapsy Hall

Weddings

The decor and grandeur of our rooms makes the Guildhall the perfect place for a wedding and you can take your pick of any of our ultra stylish spaces, they are all licensed for civil ceremonies.

We've got the reception covered too, whether you're looking for an intimate celebration for 20 or a spectacular banquet for 600, the Guildhall truly is a unique and diverse venue.

Discover what the Guildhall can offer you by calling our dedicated events team

Guildhall  **Winchester**

Broadway, High Street, Winchester, Hampshire SO23 9GH

Tel: 01962 840 820

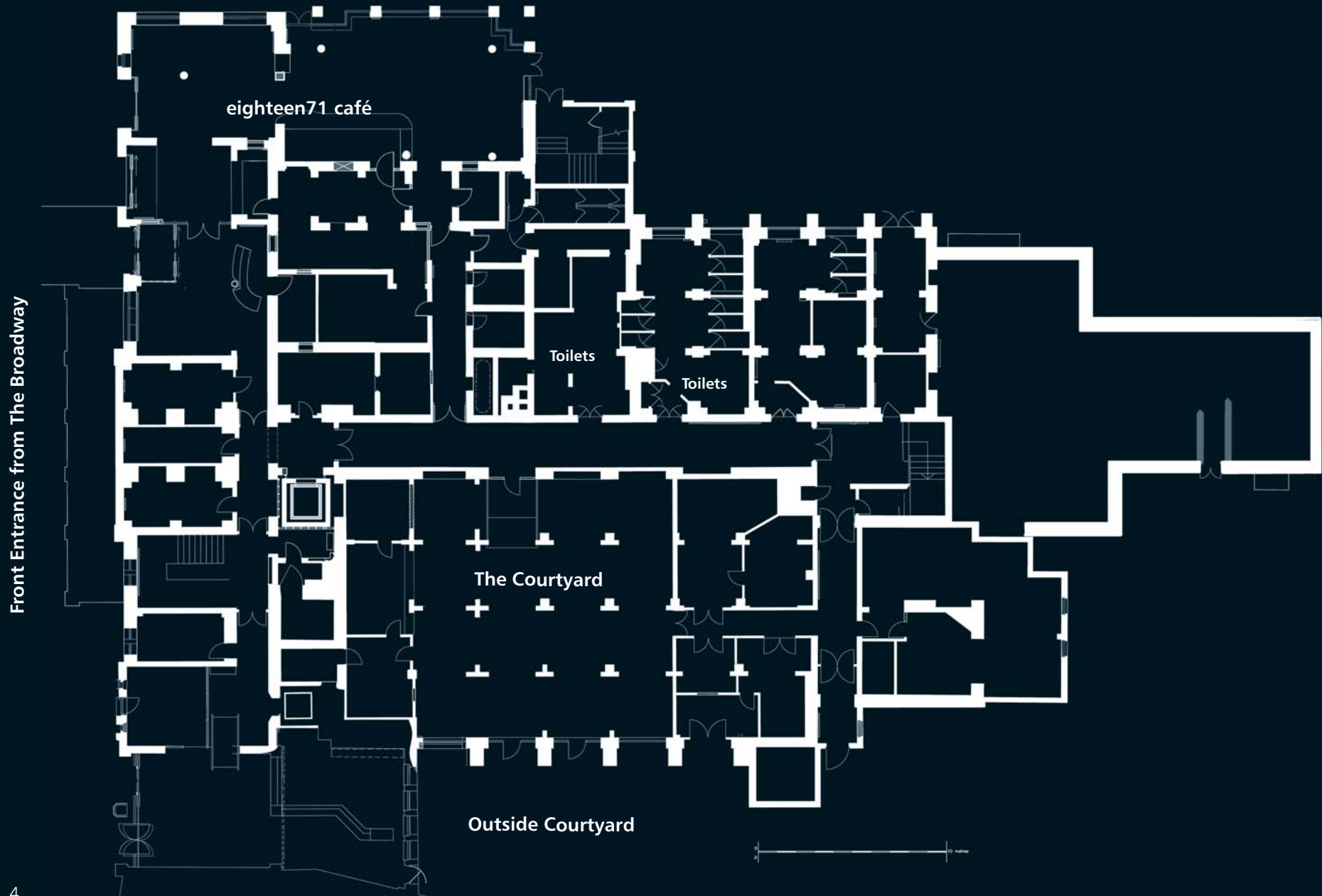
Email: guildhall@winchester.gov.uk

Web: www.guildhallwinchester.co.uk

www.facebook.com/guildhallwinchester

 Find us on
Facebook

Ground Floor

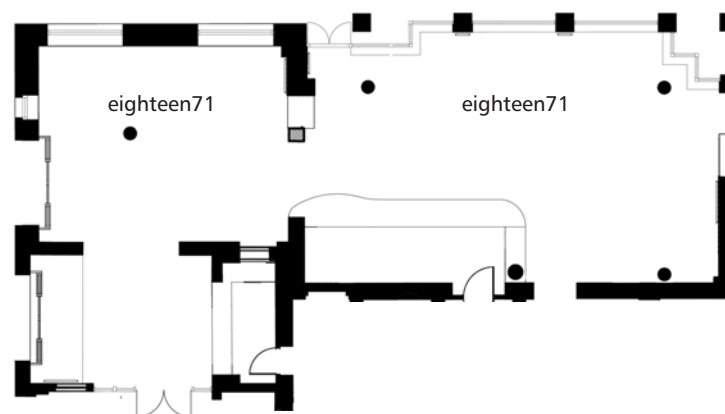


eighteen71 café (evenings only)



Eighteen71 is available in the evenings as a vibrant function room, perfect for parties and celebrations.

This modern space offers a more informal relaxed atmosphere and boasts comfortable seating, its own bar and plenty of room to dance the night away.



MAXIMUM NUMBERS

Banquet	-
Dinner Dance	-
Reception Drinks	120
Buffet	120
	(standing)
Classroom	-
Boardroom	-
Concert	-
Cabaret	-
Theatre Front Projection	-
Theatre Back Projection	-

DIMENSIONS (metres)

Length	18
Width	10
Height	2.3
Doorways	
– Height	2
– Width (min)	1.5
Floor Space m ²	175

ELECTRICAL

No. of Power Points	8
Type – 13 amp	✓
Single Phase	✓
Three Phase	✗

SUITABILITY FOR

Exhibitions	✗
Conferences	✗
Fashion Shows	✗
Balls / Proms	✓
Dances	✗
Banquets	✗
Film Shows	✓
Back Projection	✗
Stage Presentations	✗
Cabaret	✗

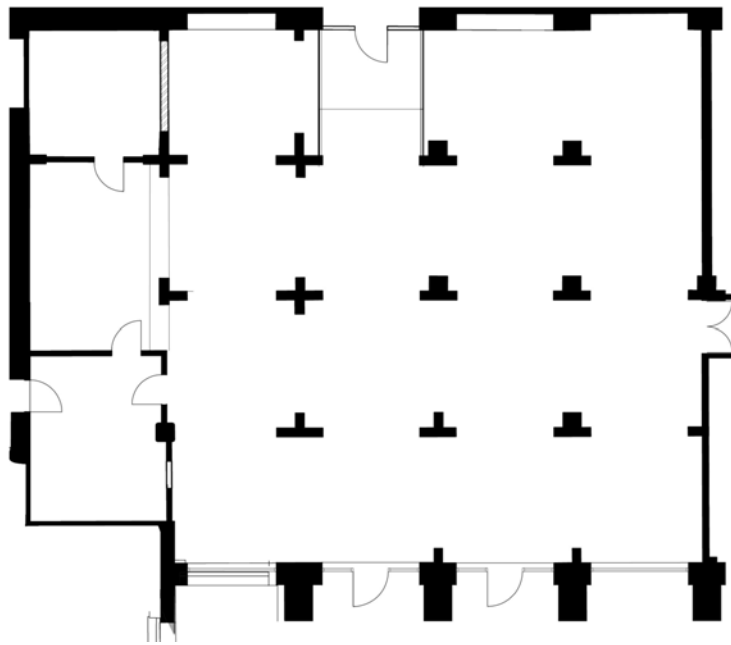
FACILITIES

PA System (portable system available)	✓
Mic. Points	-
Lighting System	✗
Direct Dial Telephone	✓
Dance Floor	✓
Licensed Bar	✓
Toilets	✓



The Courtyard

Our atmospheric Courtyard Room boasts original Victorian brick archways and reputedly once housed the holding cells for the district. It now forms an intimate space ideal for private dinners, parties, and for additional break out space, workshops or creative fares.



MAXIMUM NUMBERS

Banquet	130
Dinner Dance	80
Reception Drinks	150
Buffet (standing)	150
Classroom	-
Boardroom	20
Concert (restricted view)	30
Cabaret (restricted)	80
Theatre Front Projection	30
Theatre Back Projection	-

DIMENSIONS (metres)

Length	14
Width	14
Height	2.6
Doorways	
– Height	1.9
– Width (min)	0.8
Floor Space m ²	198.8

ELECTRICAL

No. of Power Points	
Type – 13 amp	8
Single Phase	✓
Three Phase	✗

SUITABILITY FOR

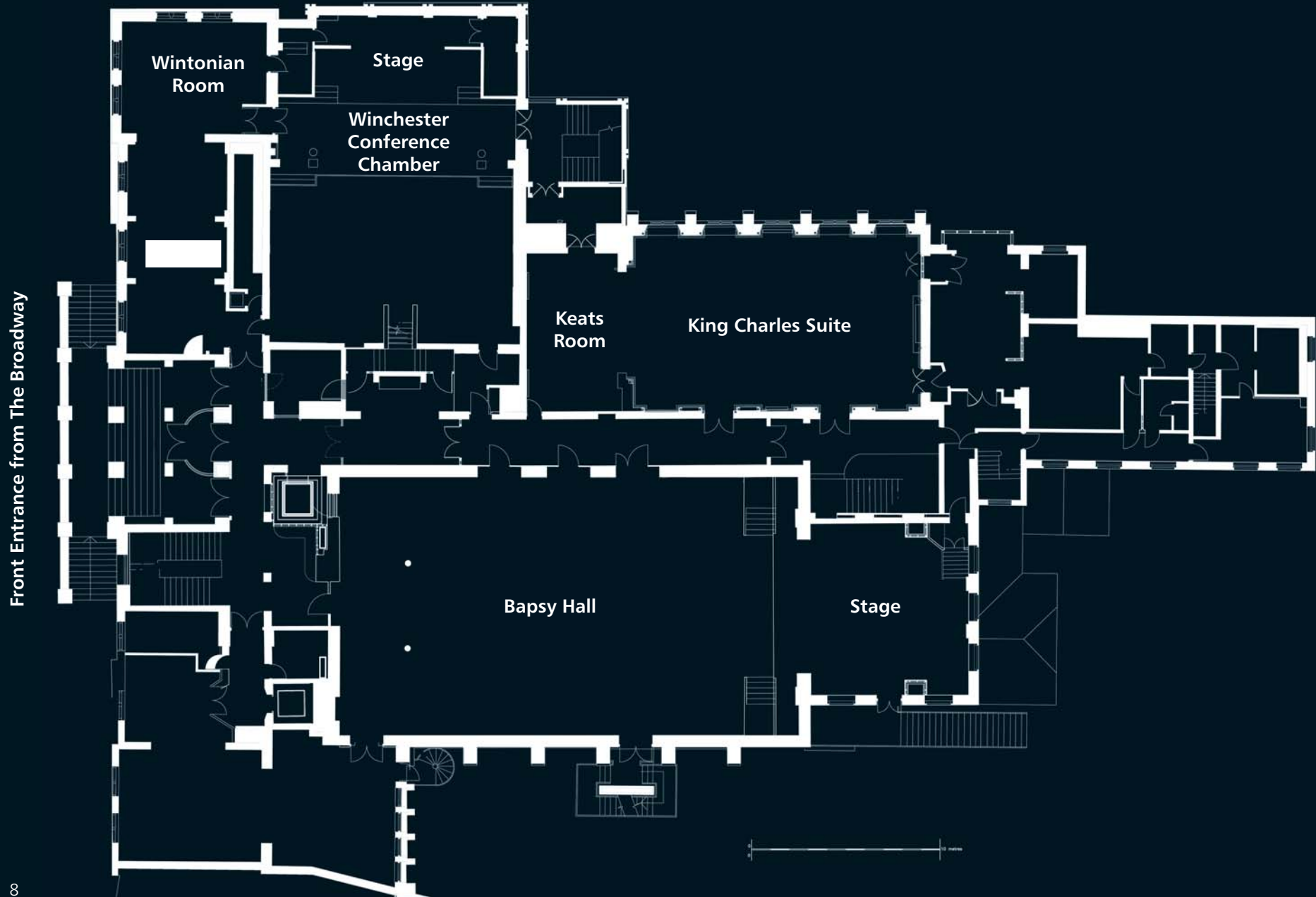
Exhibitions	✓
Conferences	✗
Fashion Shows	✓
Balls / Proms	✓
Dances	✓
Banquets	✓
Film Shows	✗
Back Projection	✗
Stage Presentations	✗
Civil Ceremony	✓

FACILITIES

PA System (portable system available)	✓
Mic. Points	-
Lighting System	✗
Direct Dial Telephone	✗
Dance Floor	✓
Licensed Bar	✓
Toilets	✓

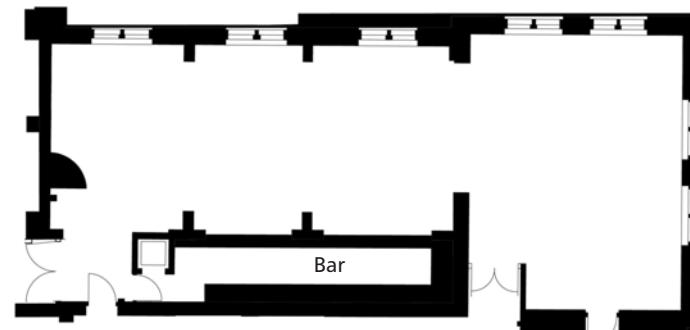


First Floor



Wintonian Room

Beautiful arched windows, original to the period of the building, provide wonderful natural daylight to this room. A polished wooden floor, subtle décor and contemporary styling make it ideal for formal or informal meetings. It may also be turned into a flexible meeting space by dividing the room using a removable partition wall.



MAXIMUM NUMBERS

Banquet	70
Dinner Dance	60
Reception Drinks	120
Buffet	120
	(standing)
Classroom	20
Boardroom	30
Concert	40
Cabaret	30
Theatre Front Projection	60
Theatre Back Projection	40

DIMENSIONS (metres)

Length	17.5
Width	8
width at narrowest point	(5.1m)
Height	3.73
Doorways	
– Height	2
– Width (min)	1.6
Floor Space m ²	96.75

ELECTRICAL

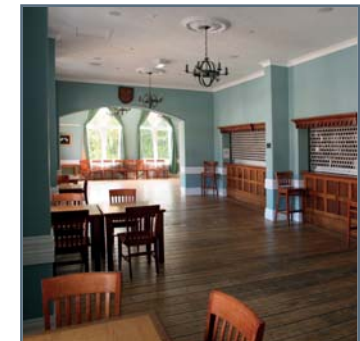
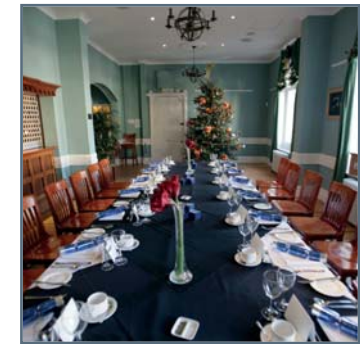
No. of Power Points	
Type – 13 amp	8
Single Phase	✓
Three Phase	✗

SUITABILITY FOR

Exhibitions	✓
Conferences	✓
Fashion Shows	✓
Balls / Proms	✓
Dances	✓
Banquets	✓
Film Shows	✗
Back Projection	✓
Stage Presentations	✗
Civil Ceremony	✓

FACILITIES

PA System (portable system available)	✓
Mic. Points	-
Lighting System	✗
Direct Dial Telephone	✓
Dance Floor	✓
Licensed Bar (ensuite)	✓
Toilets	✓





The King Alfred Conference Chamber

A purpose built lecture theatre that offers tiered seating plus a built-in audio visual controller's gallery and stage; a perfect venue for seminars, product launches and lectures.

MAXIMUM NUMBERS

Banquet	-
Dinner Dance	-
Reception Drinks	-
Buffet	-
Classroom	160
Boardroom	-
Concert	-
Theatre Front Projection	160
Cabaret	-

DIMENSIONS (metres)

Length	17.5
Width	7.5
Height	6.19
Doorways	
– Height	2
– Width (min)	1.75
Floor Space m ²	96.75
Stage Width	9

ELECTRICAL

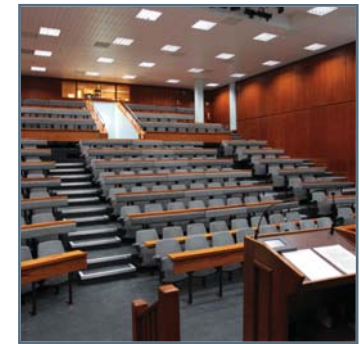
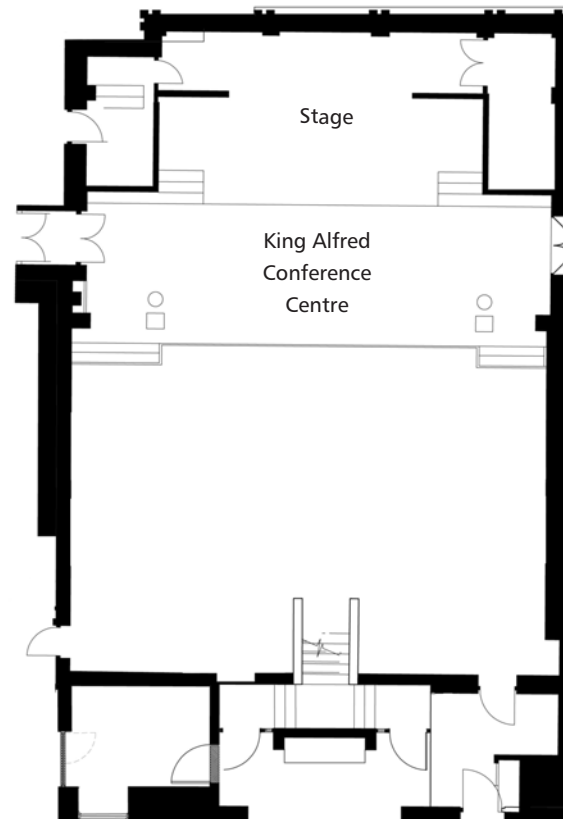
No. of Power Points	
Type – 13 amp	8
Single Phase	✓
Three Phase	✗

SUITABILITY FOR

Exhibitions	✓
Conferences	✗
Fashion Shows	✓
Balls / Proms	✗
Dances	✗
Banquets	✗
Film Shows	✓
Back Projection	✗
Stage Presentations	✓
Civil Ceremony	✓

FACILITIES

PA System (portable system available)	✓
Mic. Points	9
Lighting System	✓
Direct Dial Telephone	✗
Dance Floor	✗
Licensed Bar	✓
Toilets	✓
Induction Loop System	✓





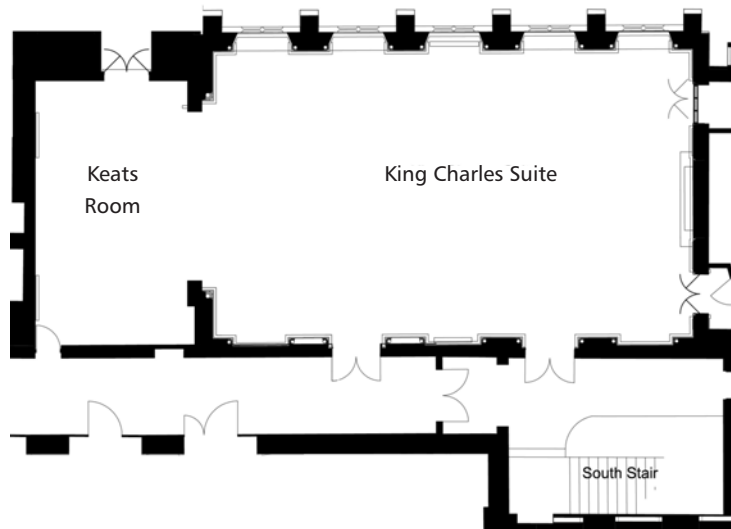
The King Charles Hall

Wood panelling, high-beamed ceiling, original oil paintings and a Minstrel's Gallery make this room a unique and distinctive setting.

The King Charles Suite has a small annexe called the Keats Room. This can be used to create extra meeting space or an area in which to provide refreshments.

Keats Room

A small, modern meeting room which may be used in conjunction with the King Charles Suite; this space benefits from a moveable partition wall allowing it to form a small syndicate room or flexible extension as required.



MAXIMUM NUMBERS

	K.Charles	Keats
Banquet	100	20
Dinner Dance	80	-
Reception Drinks	150	20
Buffet	120	20
Classroom	75	12
Boardroom	60	18
Concert	150	-
Cabaret	80	-
Theatre Front		
Projection	150	30

DIMENSIONS (metres)

Length	15	8.3
Width	9	4.8
Height	9.3	2.9
Doorways		
– Height	2	2
– Width (min)	1.6	0.72
Floor Space m ²	135	38.25

ELECTRICAL

	K.Charles	Keats
No. of Power Points		
Type – 13 amp	25	4
Single Phase	✓	✓
Three Phase	✓	✗

SUITABILITY FOR

Exhibitions	✓	✓
Conferences	✓	✓
Fashion Shows	✓	✗
Balls / Proms	✓	-
Dances	✓	✗
Banquets	✓	✗
Film Shows	✓	✗
Front Projection	✓	✓
Back Projection	✓	✗
Stage Presentations	✗	✗
Civil Ceremony	✓	✓

FACILITIES

PA System	✓	✗
Mic. Points	6	-
Lighting System	✗	✗
Direct Dial Telephone	2	1
Dance Floor	✓	✗
Licensed Bar	✓	✓
Toilets	✓	✓
Induction Loop System	✓	✓



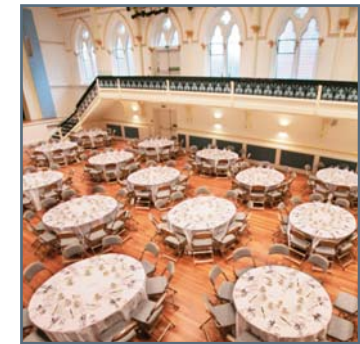
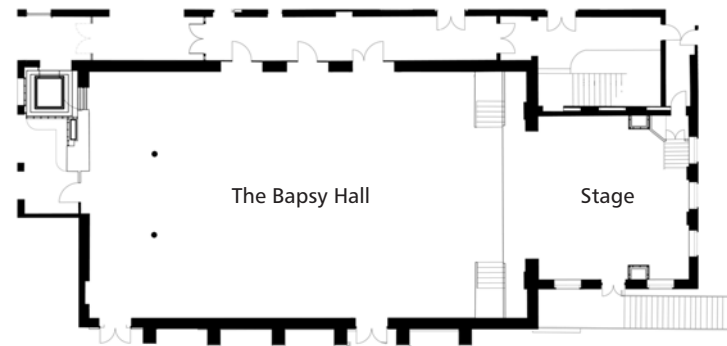
© Angela Ward-Brown



The Bapsy Hall

Gala dinner, charity ball, product launch or corporate reception – whatever the occasion, the grandeur of the Bapsy Hall can comfortably accommodate your event, and your guests. And we do mean comfortably, with air-conditioning, and a separate break-out area for buffets and refreshments giving maximum space to mingle.

An elegant Victorian hall retaining many of its period features. One of the largest event spaces in Hampshire, affording natural daylight and a purpose built stage, with attached green room suitable for any performance. The Bapsy boasts a state of the art lighting and sound system which creates the perfect mood for any event with seating at ground level and the upper balcony; a truly magnificent venue for any event.



© Burlison Photography

MAXIMUM NUMBERS

Banquet	300
Dinner Dance	260
Reception Drinks	600
Buffet	300
Classroom	180
Boardroom	100
Concert	620
Cabaret	200
Theatre Front Projection	625
Theatre Back Projection	625

DIMENSIONS (metres)

Length	23
Width	13
Height	10
Doorways	
– Height	2.5
– Width (min)	2
Floor Space m ²	312
Stage	
– Length	10.3
– Width	7.1

POWER FACILITIES

No. of Power Points	
Type – 13 amp	28
Single Phase	✓
Three Phase	✓

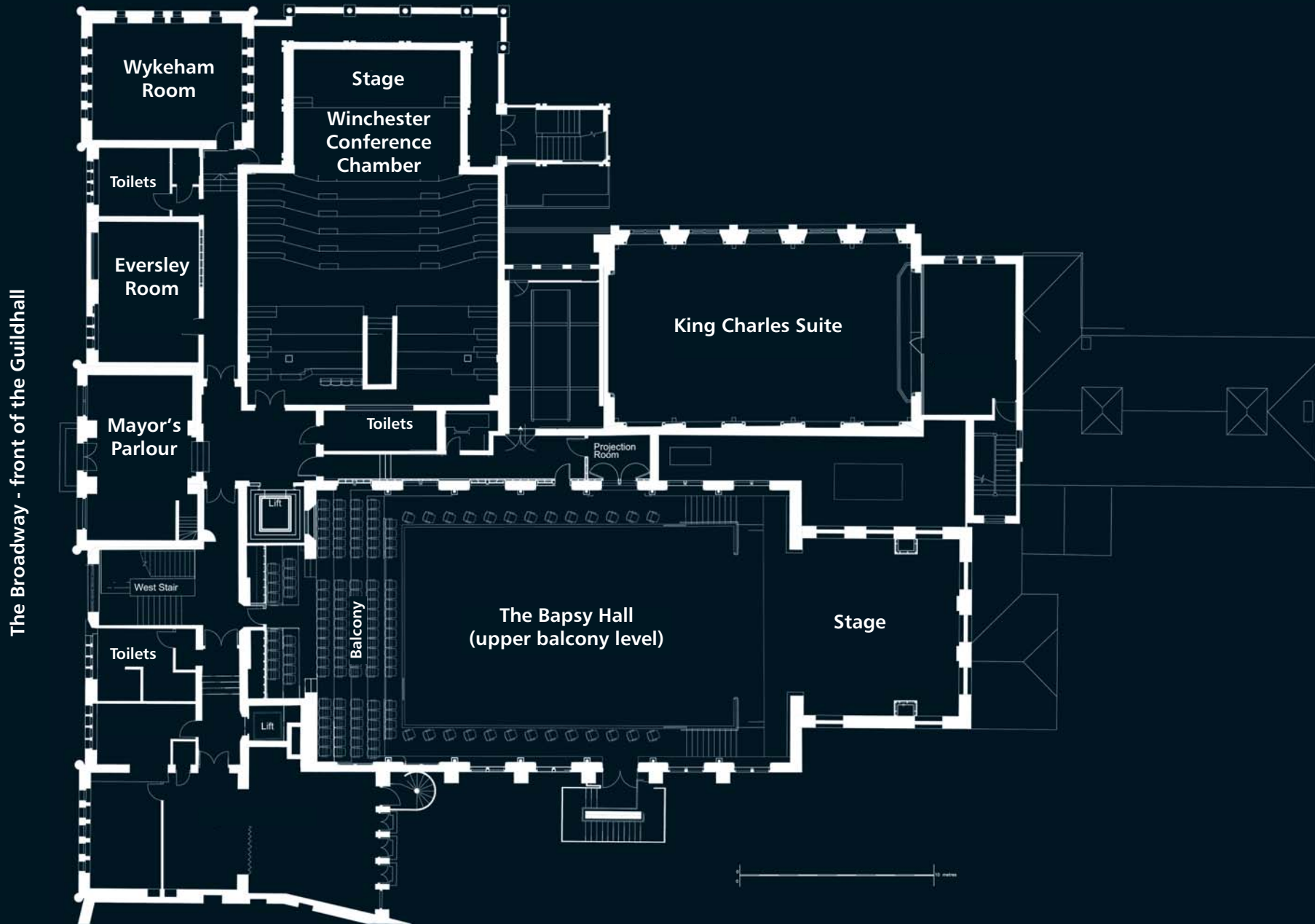
SUITABLE FOR

Exhibitions	✓
Conferences	✓
Fashion Shows	✓
Balls / Proms	✓
Dances	✓
Banquets	✓
Film Shows	✓
Back Projection	✓
Stage Presentations	✓
Civil Ceremony	✓
Live Concerts	✓

FACILITIES

PA System	✓
Mic. Points	9
Lighting System	✓
Direct Dial Telephone	4
Dance Floor	✓
Licensed Bar	✓
Toilets	✓
Induction Loop System	✓
Green Room	✓

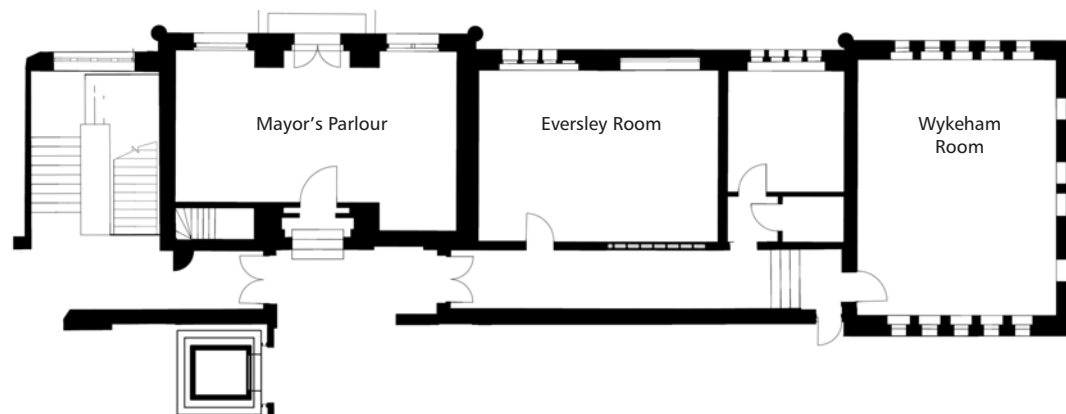
Second Floor



Eversley Room



A modern meeting space ideal for intimate meetings or for interviews. A bright space with plenty of natural daylight.



Wykeham Room



Arched windows on three sides make it light and airy, with views over the trees of Abbey Gardens to St Giles Hill, allowing an abundance of natural daylight into this versatile space. Suitable for meetings, private dining and seminars.

MAXIMUM NUMBERS

	Eversley	Wyke.
Banquet	20	20
Dinner Dance	-	-
Reception Drinks	40	40
Buffet	25	25
Classroom	16	16
Boardroom	25	25
Concert	-	-
Cabaret	20	20
Theatre Front		
Projection	40	40

DIMENSIONS (metres)

	Eversley	Wyke.
Length	7	8
Width	5	6
Height	2.5	3
Doorways		
– Height	2.5	2.1
– Width (min)	0.9	0.9
Floor Space m ²	38	48

POWER FACILITIES

	Eversley	Wyke.
No. of Power Points		
Type – 13 amp	2	6
Single Phase	✓	✓
Three Phase	x	x

SUITABLE FOR

	Eversley	Wyke.
Exhibitions	✓	✓
Conferences	✓	✓
Fashion Shows	x	x
Balls / Proms	-	-
Dances	x	x
Banquets	x	x
Film Shows	✓	✓
Back Projection	x	x
Stage Presentations	x	
Intimate Dinner	✓	✓
Civil Ceremony	✓	✓

FACILITIES

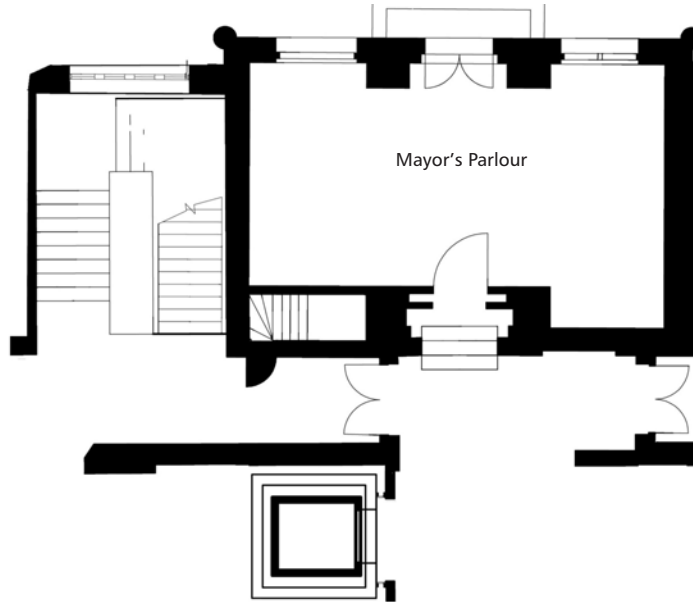
	Eversley	Wyke.
PA System (portable system available)	✓	✓
Mic. Points	-	-
Lighting System	x	x
Direct Dial Telephone	1	1
Dance Floor	x	x
Licensed Bar	✓	✓



Mayor's Parlour



An elegant room, adorned with many of the Mayors of Winchester from the past 100 years. The Mayor's Parlour is perfect for smaller meetings and intimate private dining.



MAXIMUM NUMBERS

Banquet	-
Dinner Dance	-
Reception Drinks	30
Buffet	20
Classroom	8
Boardroom	18
Concert	-
Theatre Front Projection	30
intimate Dinner	20

DIMENSIONS (metres)

Length	8.5
Width	5.5
Height	4.9
Doorways	
- Height	2.1
- Width (min)	1.7
Floor Space m ²	4.7

SUITABLE FOR

Exhibitions (small)	✓
Conferences	✓
Fashion Shows	x
Balls / Proms	-
Dances	x
Banquets	x
Film Shows	x
Back Projection	x
Stage Presentations	x
Civil Ceremony	✓

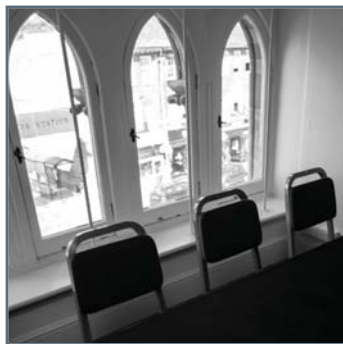
FACILITIES

PA System (portable system available)	✓
Mic. Points	-
Lighting System	x
Direct Dial Telephone	✓
Dance Floor	x
Licensed Bar	✓

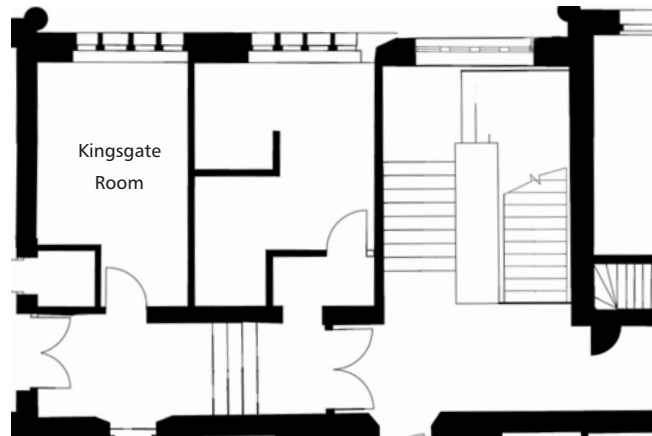
POWER FACILITIES

No. of Power Points Type – 13 amp 4 Single Phase only ✓

Kingsgate Room



Small and cosy space perfect for a breakout room, interviews or smaller meetings of up to 10 people.



MAXIMUM NUMBERS

Reception Drinks	-
Buffet	-
Classroom	6
Boardroom	10

DIMENSIONS (metres)

Length	5.2
Width	3.2
Height	2.4
Doorways	
- Height	2
- Width (min)	0.8

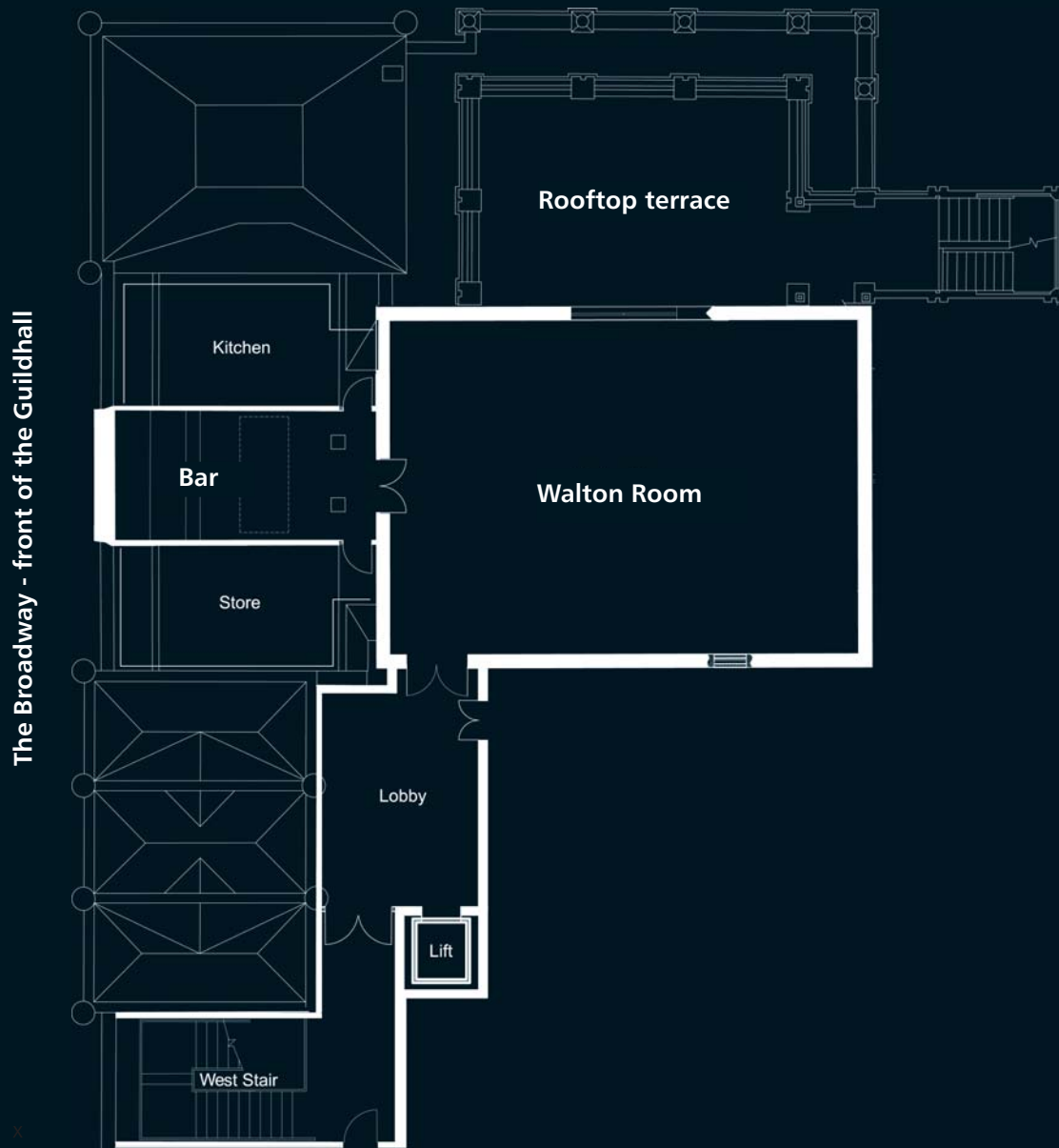
SUITABLE FOR-

Meetings	✓
----------	---

FACILITIES

Direct Dial Telephone	✓
-----------------------	---

Third Floor



Walton Suite

This bright, modern room at the top of the building is a very popular choice. A new extension has provided ideal space for a break out area and the roof terrace provides a breath of fresh air and superb views.

MAXIMUM NUMBERS

Banquet	80
Dinner Dance	60
Reception Drinks	120
Buffet	80
Classroom	60
Boardroom	60
Cabaret	65
Theatre Front Projection	100

DIMENSIONS (metres)

Length	13.5
Width	9
Height	5.3
Balcony	
– Length	9
– Width	6
Doorways	
– Height	2
– Width (min)	1.05
Floor Space m ²	120

ELECTRICAL

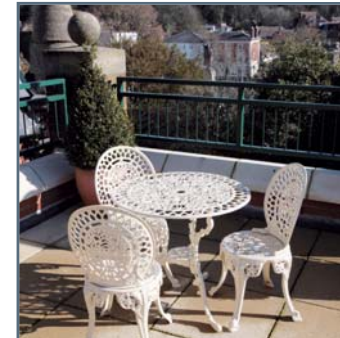
No. of Power Points	
Type – 13 amp	8
Single Phase	✓
Three Phase	✗

SUITABILITY FOR

Exhibitions	✓
Conferences	✓
Fashion Shows	✗
Balls / Proms	✓
Dances	✓
Banquets (small)	✓
Film Shows	✓
Back Projection	✓
Stage Presentations	✗
Civil Ceremony	✓

FACILITIES

PA System (portable system available)	✓
Mic. Points	-
Lighting System	✗
Direct Dial Telephone	2
Portable Dance Floor	✓
Licensed Bar (ensuite)	✓
Infrared Loop System	✓





PUSH BAR TO OPEN

YAMAHA

Accommodation & Itinerary

Winchester has an eclectic selection of hotels, boutique style hotels and bed and breakfast, many within a short walk of the Guildhall and many of whom will be pleased to offer you preferential rates. Your dedicated event manager or members of the award winning tourist information centre located in the Guildhall will be more than happy to assist with your bookings or advice on where to stay and with Winchester's amazing array of local attractions many of your guests may wish to make your special day a special weekend away.

Parking

Limited spaces are available at the Guildhall. We can also offer discounted parking at various locations around Winchester including Park and Ride. For further details please contact the Event Team on 01962 840 820.



Guildhall Winchester, Broadway, High Street, Winchester, Hampshire SO23 9GH

Tel: 01962 840 820

Email: guildhall@winchester.gov.uk

Web: www.guildhallwinchester.co.uk

Find us on Facebook www.facebook.com/GuildhallWinchester