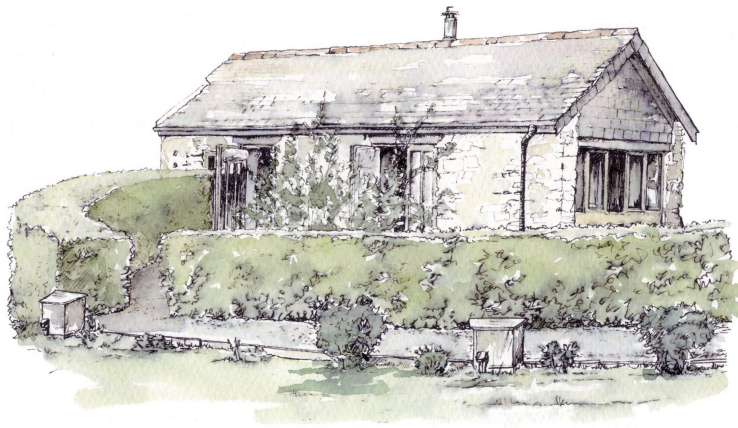


TREVENNA



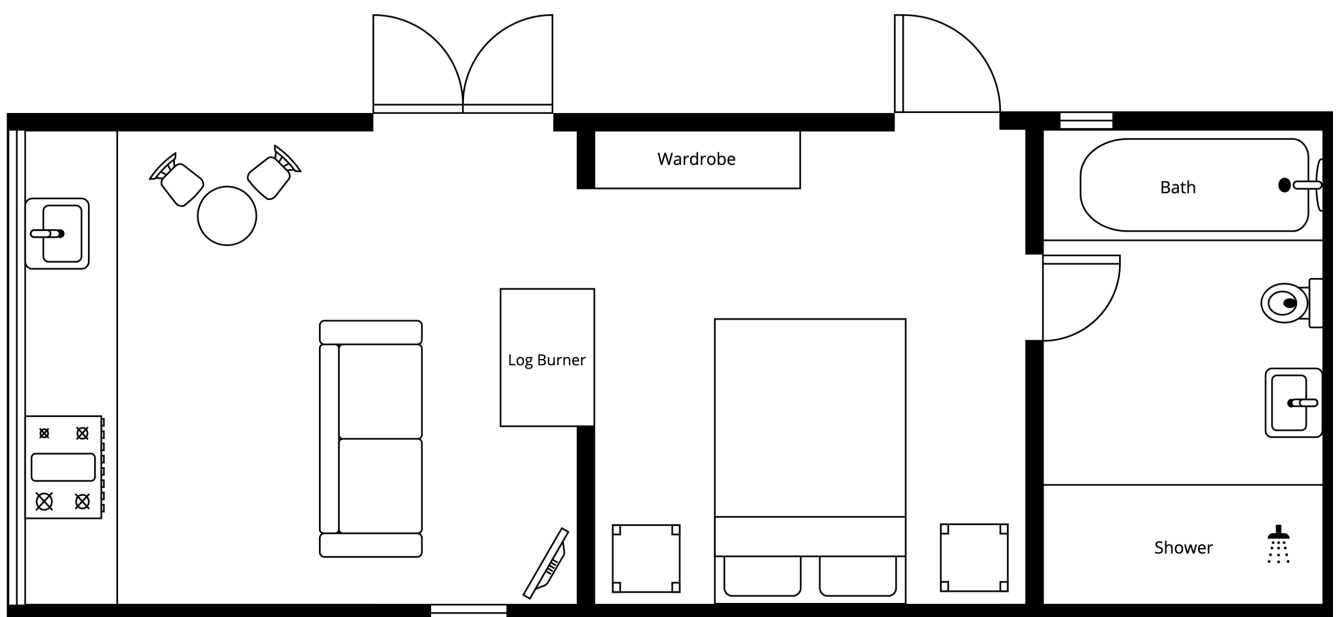
Page	Barn
2	The Wagon House
3	The Granary
4	The Shippon
5	The Stable
6	The Loft
7	The Threshing
8	The Farm House



The Wagon House

Most couples stay in the Wagon House the night following the Ceremony. The Groom may also stay in here on his own the night before, to ensure he does not see his Bride in the morning!

This cute barn is just for two guests. Open plan living with kitchen, lounge and look through real Log Fire to the bedroom. Large private bathroom with deep bath tub and double shower with drench head.

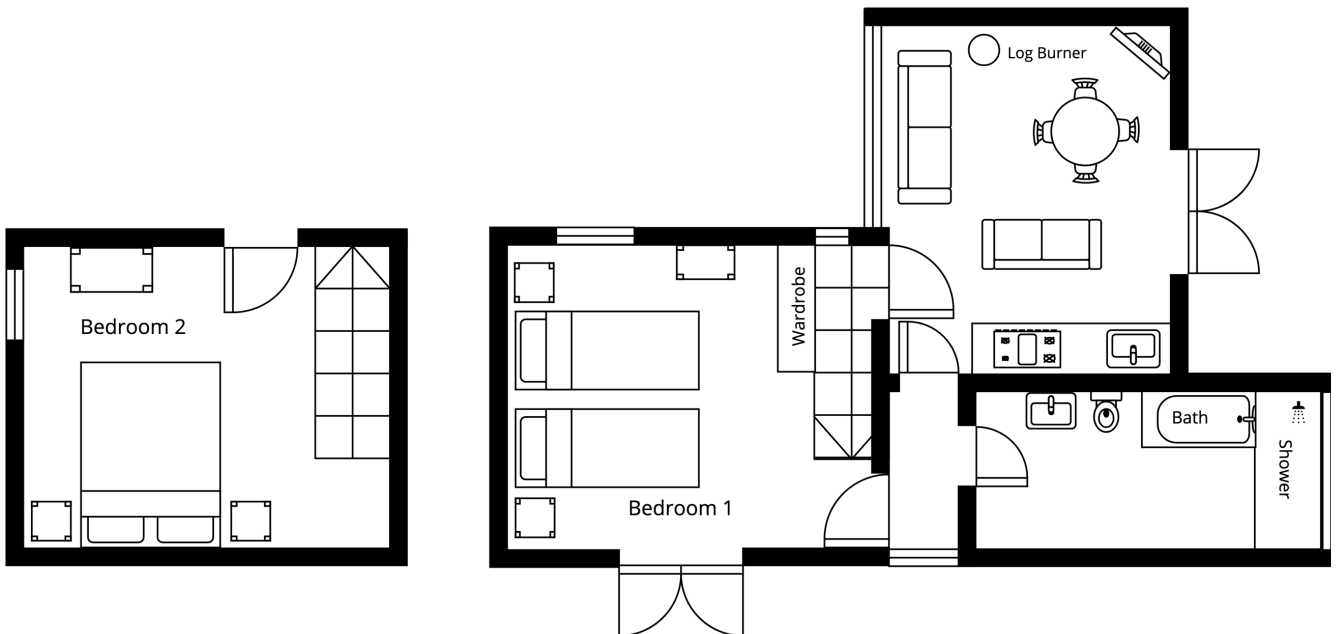




The Granary

One of the oldest barns with original hand cut beams and exposed stone walls. Open plan living with kitchen, lounge and log burner, with a twin bedroom on the ground floor and a double bedroom upstairs. Large shared bathroom with deep bath tub and double shower with drench head.

The hand cut beams in the upstairs bedroom are beautiful. A great barn for parents & family members.

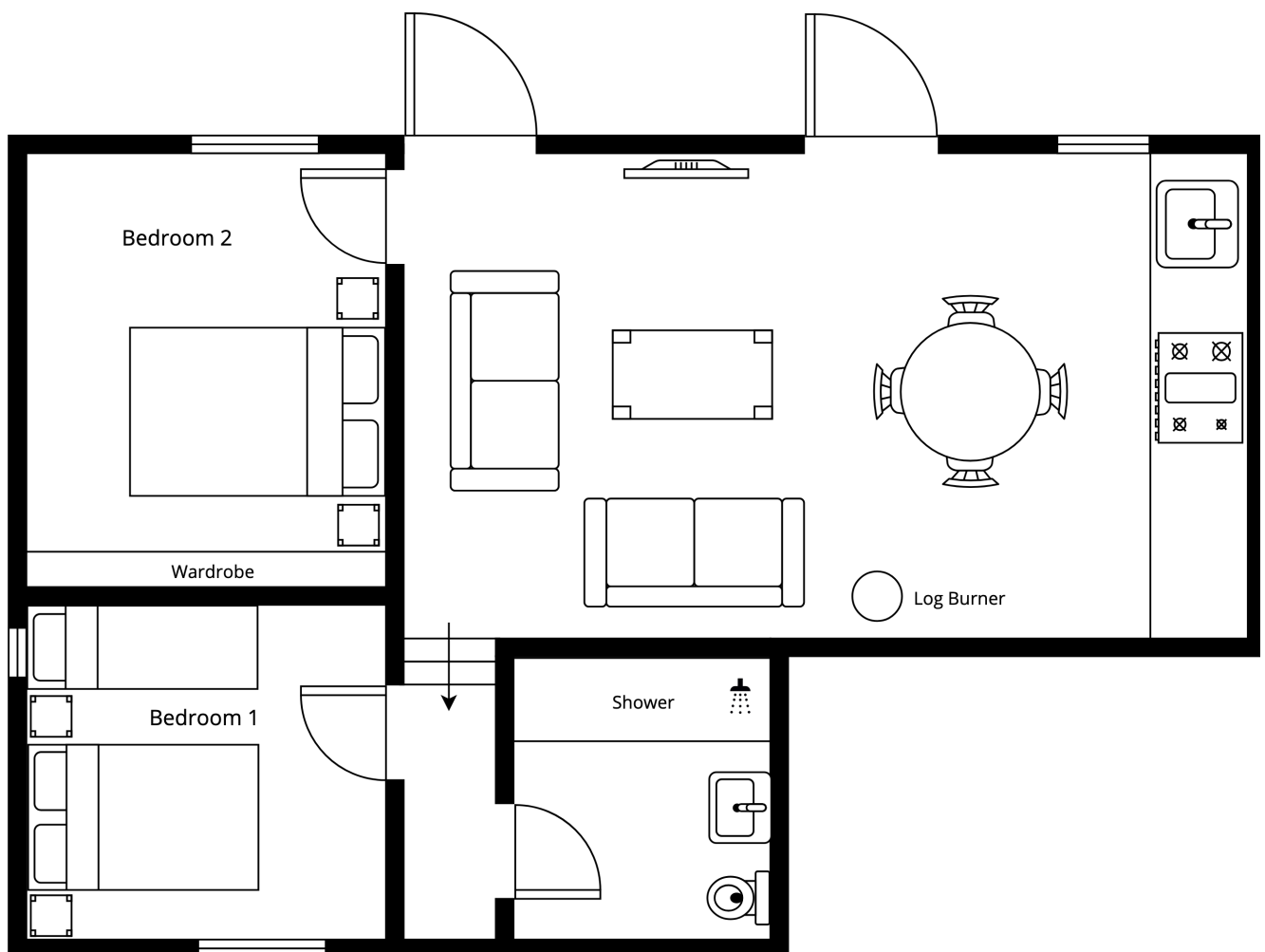




The Shippon

We love the large living area in the Shippon. As there are steps up to the bathroom & the shower is above the Bath, we do not recommend this barn for elderly or the infirm.

The Shippon has large open plan living with kitchen, lounge, log burner, vaulted beamed ceilings, with a double bedroom on the ground floor. Up 3 steps to triple bedroom and large shared bathroom with drench shower over the bath.

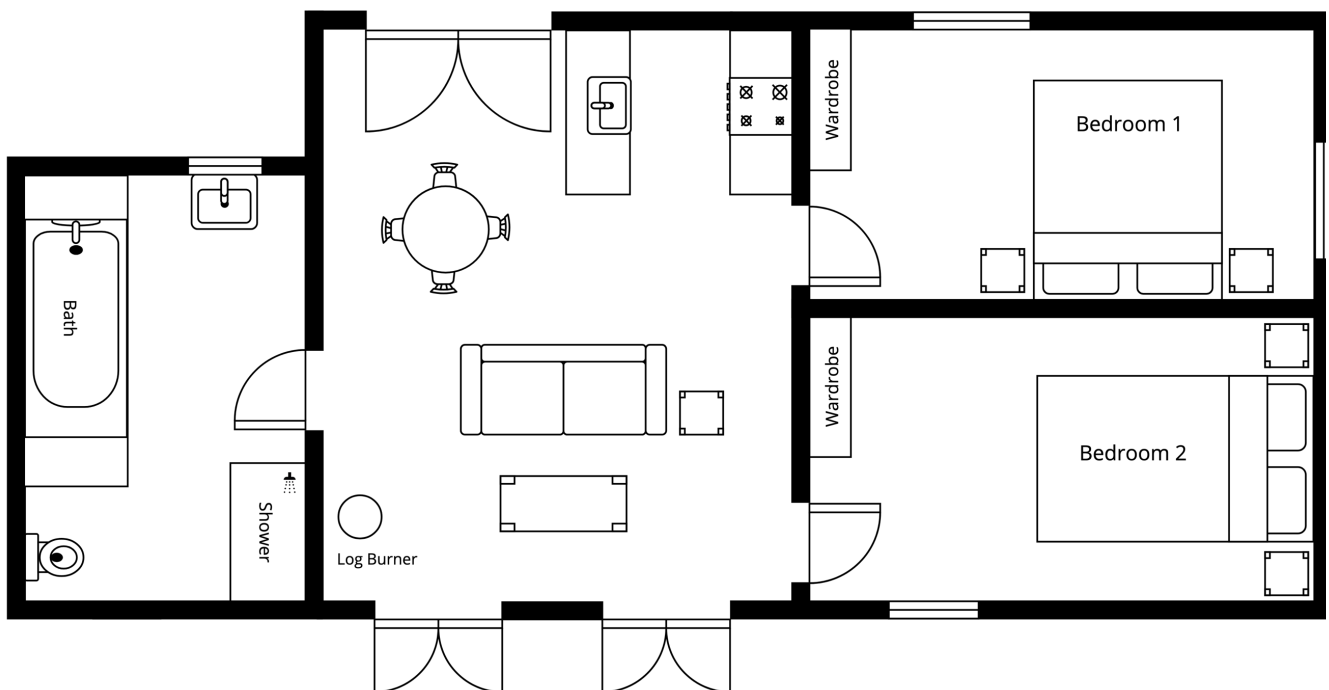




The Stable

Staying in the Stable is easy, with parking right outside and everything all on one level. The large bathroom was the former Chicken House!

The Stable is all on one level with open plan living, kitchen, lofted ceiling and log burner with two double bedrooms. The large shared bathroom has a deep bath tub and sperate drench shower.

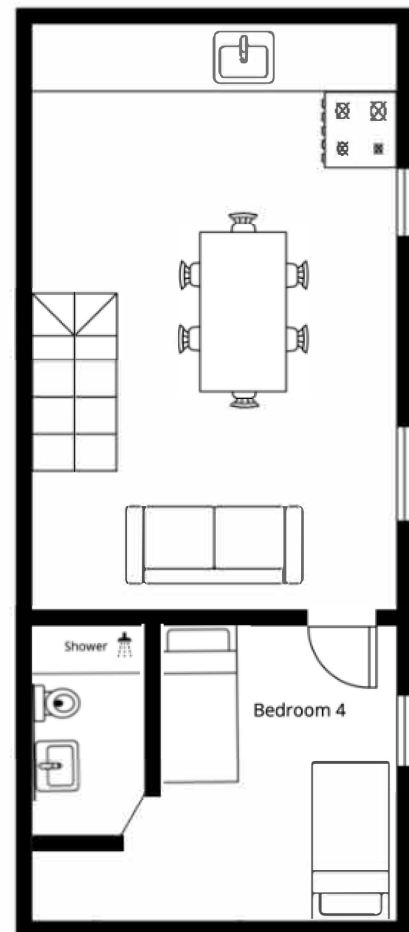
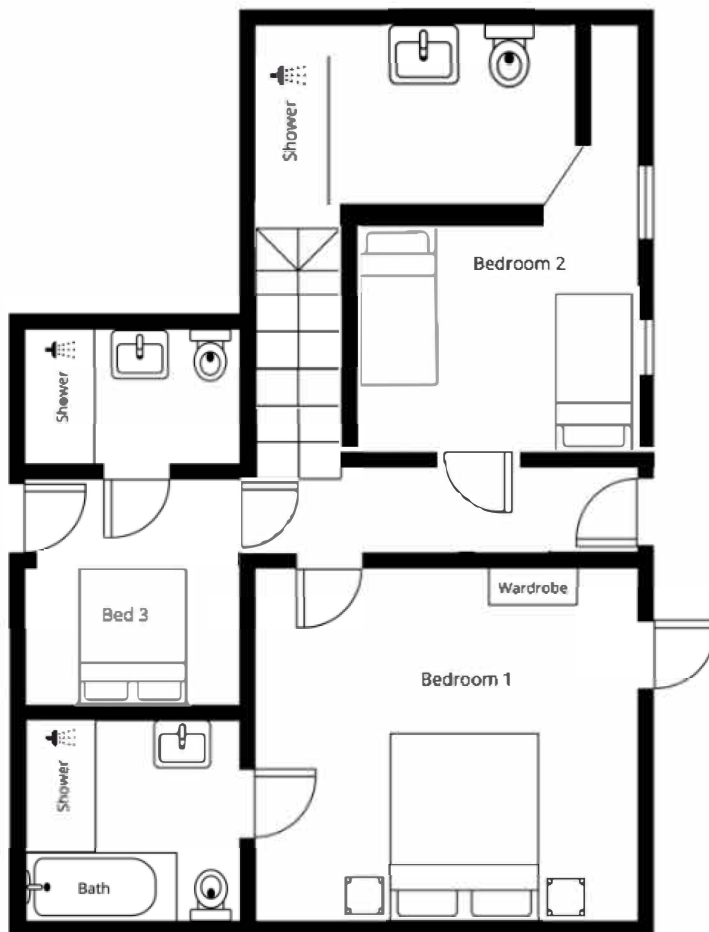




The Loft

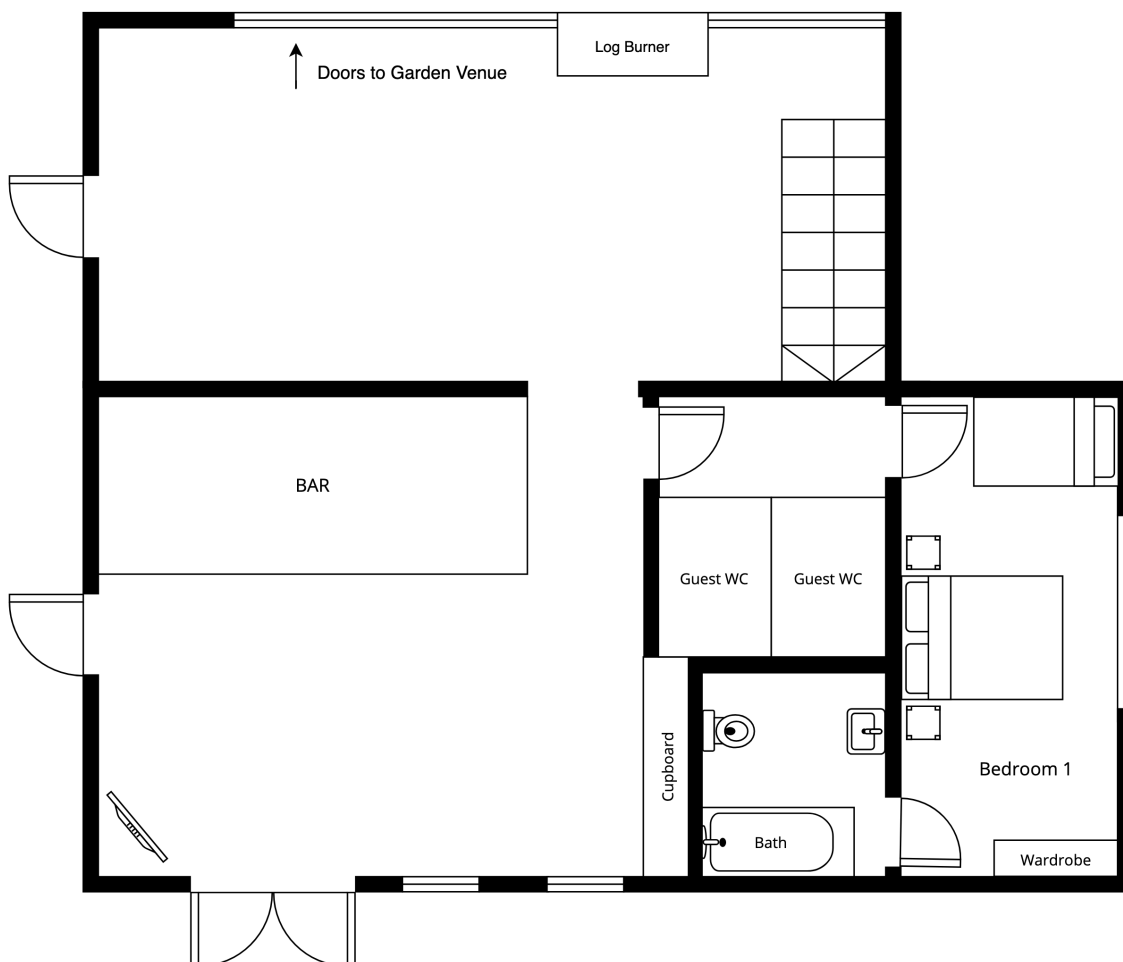
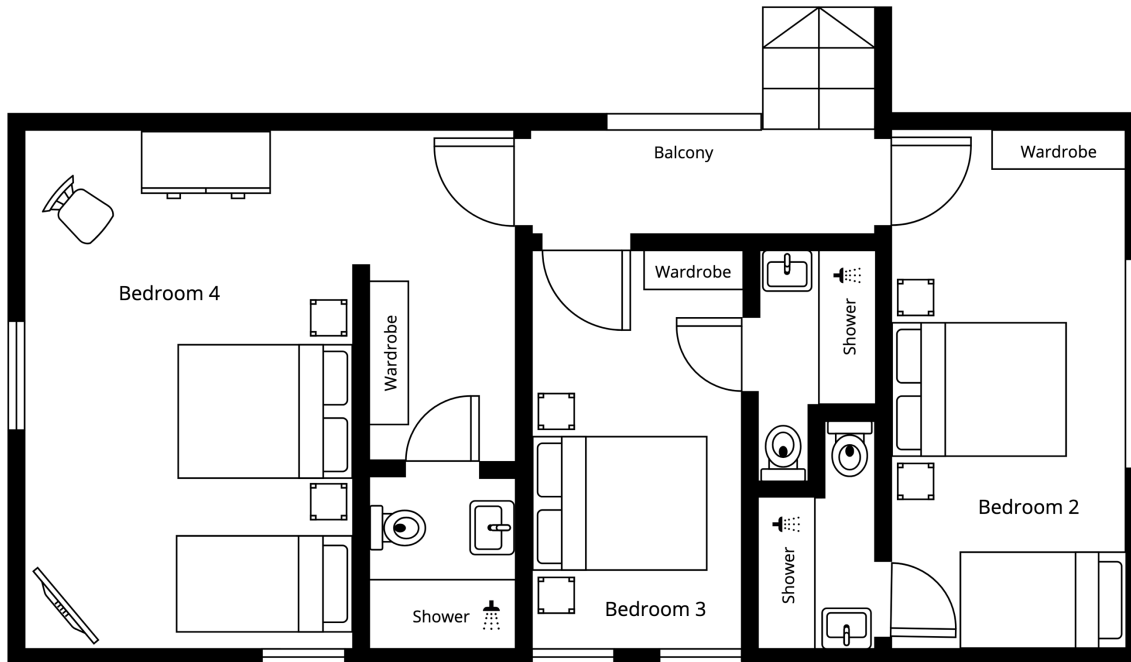
The generous space in the Loft is perfect for a group of friends who all know each other or an extended family.

The Loft is upside down, with 2 double ensuite bedrooms & a twin bedroom downstairs. The upstairs has a lounge living space and twin bedroom.



The Threshing

The Best Man, Ushers and Bridesmaids love staying in the Threshing Barn - central to the celebrations. If you are planning an after party...the Threshing Barn is perfect for guests who wish to be social to the end! The Threshing Barn is our largest barn sleeping 11 Guests in a triple ensuite bedroom on the ground floor and upstairs in 2 triple ensuite bedrooms and a double ensuite.





The Farm House

The original Farm House at Trevenna, perfect for large groups.

The Farm House has 3 double ensuite bedrooms and a single ensuite bedroom on the First Floor and 2 double ensuite bedrooms on the Ground Floor.

