



EVENTS *at* ORELLE

# ORELLE

---

103 Colmore Row, the tallest building in Birmingham, is a 230,084 square ft Grade A building at the very centre of Birmingham's bustling business district.

103 Colmore Row, formally known as National Westminster House, was designed by John Madin and was completed in October 1975 as offices and a banking hall for Natwest. The building includes the original aluminium-cast banking doors, created and made by Henry Haig, an English abstract artist, painter and sculptor.

Orelle, situated on 24th floor of 103 Colmore, offers panoramic views across the city and beyond.

The newest D&D London addition comprises a 24th floor restaurant & bar, and ground floor all-day café & terrace serving a menu of classic and modern French dishes.

103 Colmore Row, Birmingham, B3 3AG  
[www.orelle.co.uk](http://www.orelle.co.uk) | [info@orelle.co.uk](mailto:info@orelle.co.uk)  
Find us on socials @orellerestaurant





# CAFÉ AND COCKTAIL BAR

The café and cocktail bar on the ground floor serves breakfast, lunch and drinks & nibbles. Whether you're looking to host a small group of family, friends or work colleagues, we have the perfect setting for you.

## Capacities

**Up to 30 guests**  
*Seated*

**Up to 50 guests**  
*Standing*

There is an option to hire the Café and Cocktail Bar semi exclusively and include the ground floor Terrace too, a great combination of space for those warmer months.

**Capacity including Terrace**  
**Up to 100 guests**  
*Standing*



103 Colmore Row, Birmingham, B3 3AG  
[www.orelle.co.uk](http://www.orelle.co.uk) | [info@orelle.co.uk](mailto:info@orelle.co.uk)  
Find us on socials @orellerestaurant

# BAR GROUPS

The beautifully designed cocktail bar on the 24<sup>th</sup> floor offers both classic and innovative cocktails, all expertly crafted by some of Birmingham's best mixologists.

## Capacities

**Up to 20 guests**

*Standing*

Enjoy bar snacks or Canapés whilst taking in the views across the city.



103 Colmore Row, Birmingham, B3 3AG  
[www.orelle.co.uk](http://www.orelle.co.uk) | [info@orelle.co.uk](mailto:info@orelle.co.uk)  
Find us on socials @orellerestaurant



# RESTAURANT GROUPS



Orelle is the height of glamorous entertaining, serving mouth-watering canapés, and delicious set menus for group bookings.

## Capacities

**10-50 guests**

*Seated*

Treat your guests to modern French cuisine and signature cocktails, accompanied by stunning panoramic views of the city.

We can accommodate up to 50 guests in the main Restaurant to celebrate above the city with friends, family or colleagues.



103 Colmore Row, Birmingham, B3 3AG  
[www.orelle.co.uk](http://www.orelle.co.uk) | [info@orelle.co.uk](mailto:info@orelle.co.uk)  
Find us on socials @orellerestaurant

# PRIVATE DINING

A truly stunning private dining room with spectacular views across Birmingham and beyond.

This secluded space, with floor to ceiling windows, allows you to take in the beautiful city views at your leisure whilst enjoying bespoke menus that will really wow your guests.

Come together with friends, family or colleagues, from canapés to seated three-course menus, accompanied by an impressive wine menu and our signature cocktails.

## Capacities

**Up to 16 guests**  
*Seated*

**Up to 20 guests**  
*Standing*

103 Colmore Row, Birmingham, B3 3AG  
[www.orelle.co.uk](http://www.orelle.co.uk) | [info@orelle.co.uk](mailto:info@orelle.co.uk)  
Find us on socials @orellerestaurant





# WEDDINGS

---

The Restaurant at Orelle brings glamour and elegance, not only to its menus, but also through its interiors. Inspiration has been taken from the city's historic Jewellery Quarter and the site's banking heritage from Birmingham's bustling business district.

## Capacities

**120 guests**  
*Seated*

**180 guests**  
*Standing*

Getting married is a special occasion for you both as well as everyone involved. Orelle's experienced events team will manage your day from the initial enquiry through to the big day itself, assisting with everything from menu planning, décor, flowers, entertainment, table plans, place cards and much more...



103 Colmore Row, Birmingham, B3 3AG  
[www.orelle.co.uk](http://www.orelle.co.uk) | [info@orelle.co.uk](mailto:info@orelle.co.uk)  
Find us on socials @orellerestaurant

# EXCLUSIVE HIRE

For that show stopping exclusive event, Orelle can host up to 120 guests seated or 180 standing.

Soak up the atmosphere from the open-plan dining area and bar as you celebrate in style.

The menus offer a contemporary take on French cuisine, celebrating the best of British produce and the stories behind locally sourced ingredients. Our Executive Chef, Chris Emery, works with the finest seasonal ingredients and curates all menus for the seasons.

## Capacities

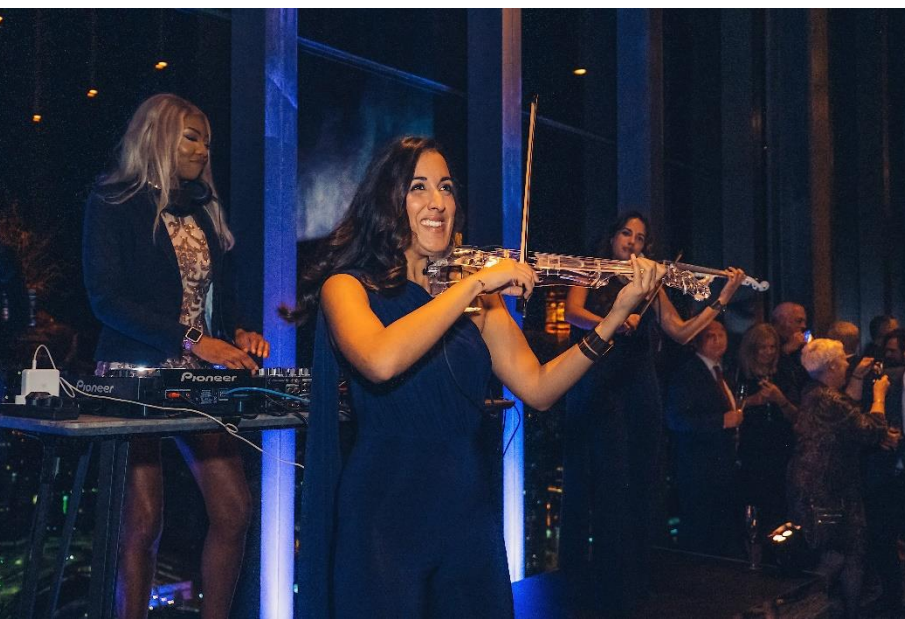
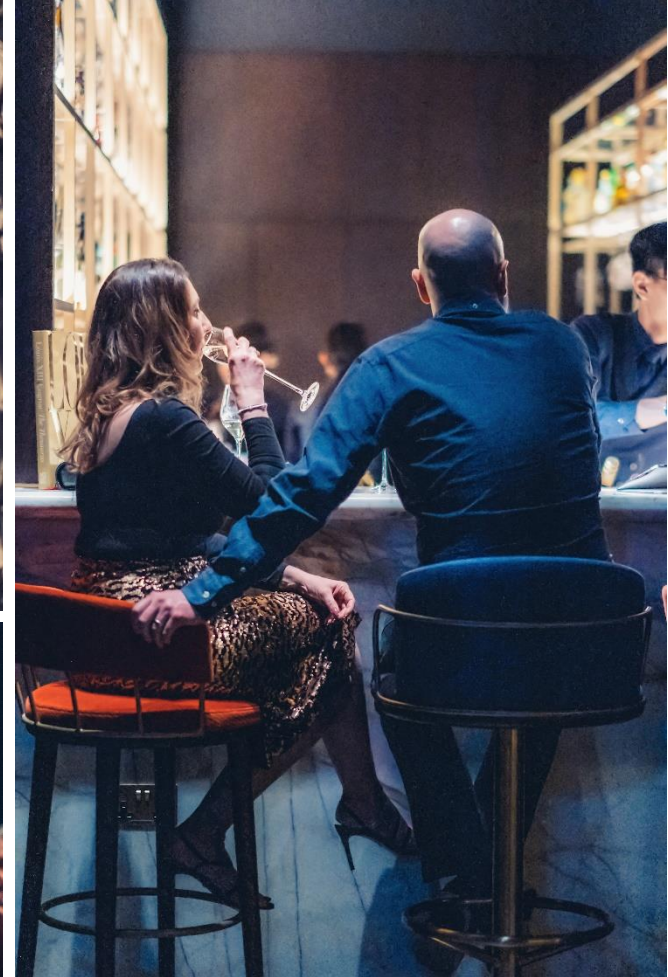
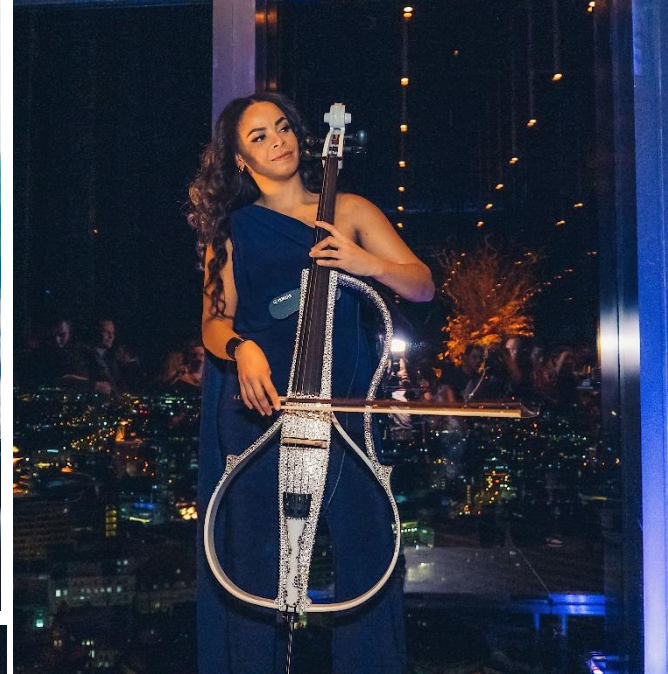
**Up to 120 guests**  
*Seated*

**Up to 180 guests**  
*Standing*

103 Colmore Row, Birmingham, B3 3AG  
[www.orelle.co.uk](http://www.orelle.co.uk) | [info@orelle.co.uk](mailto:info@orelle.co.uk)  
Find us on socials @orellerestaurant







For all event enquiries, please contact;

E: [christinagr@danddlondon.com](mailto:christinagr@danddlondon.com)

**ORELLE**  
BIRMINGHAM

103 Colmore Row, Birmingham, B3 3AG  
[www.orelle.co.uk](http://www.orelle.co.uk) | [info@orelle.co.uk](mailto:info@orelle.co.uk)  
Find us on socials @orellerestaurant