

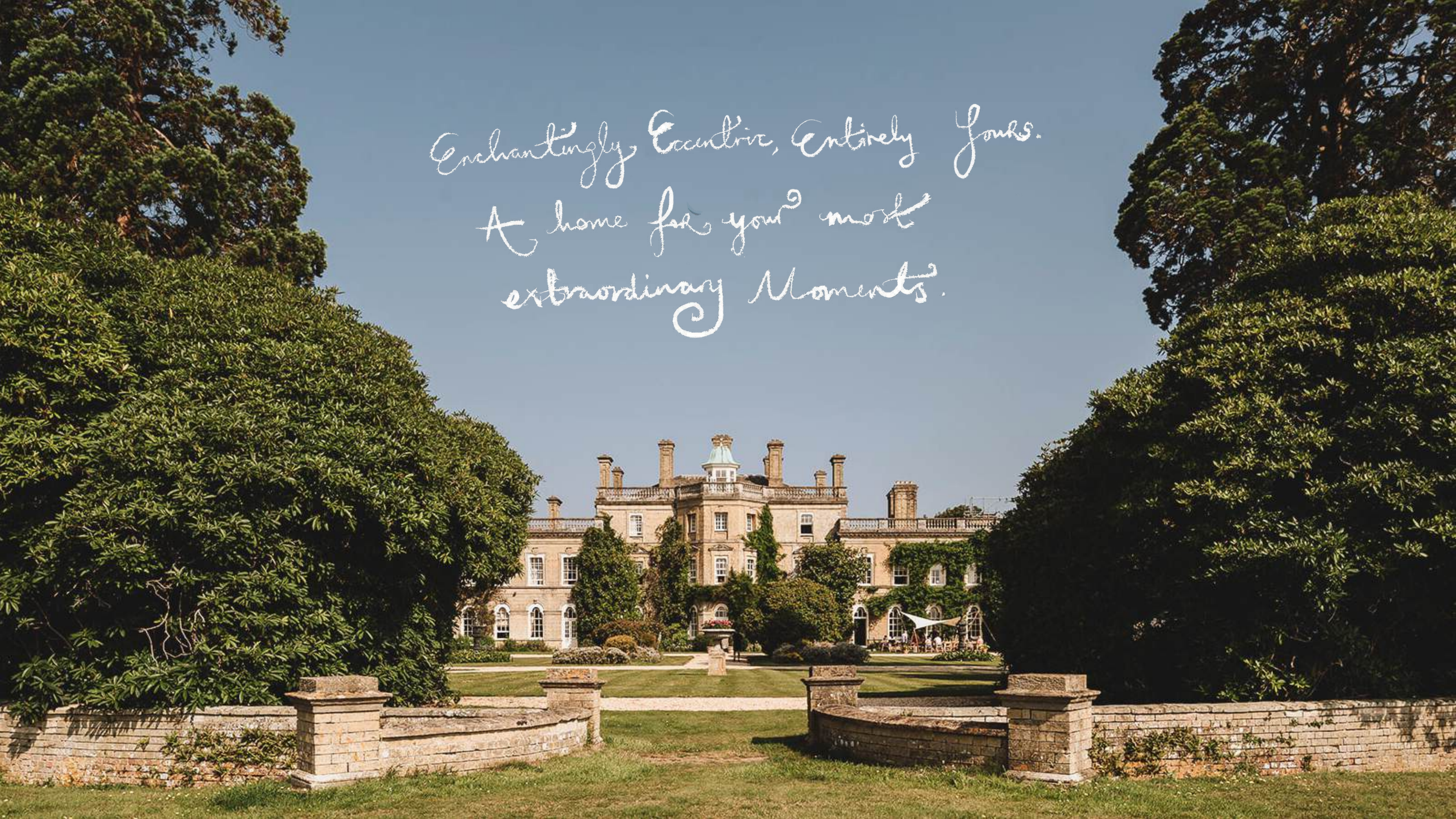


PYLEWELL
PARK

Pylewell

@willowmurphy_studio

Enchantingly, Eccentric, Entirely Yours.
A home for your most
extraordinary Moments.



An aerial photograph of a large, historic country house with a complex roofline and multiple chimneys. The house is surrounded by lush green lawns, numerous mature trees, and a circular driveway. In the background, a wide body of water, likely a bay or estuary, stretches to the horizon under a clear sky. The overall scene is peaceful and scenic, showcasing the estate's location by the sea.

Welcome

A very warm welcome to Pylewell – our one-of-a-kind country house by the sea. From bedrooms to bars, ceremony spots to party places, we invite you to make our home completely yours for a few unforgettable days.

We like to do things a little differently around here—no rigid rules, no set packages. Just beautifully unique, wildly personal celebrations that feel like you. This brochure will give you a flavour of what we're all about, but we can't wait to meet you, dream up ideas together, scroll Pinterest, and help plan the best party of your life.

Mel, Nicole, Amy

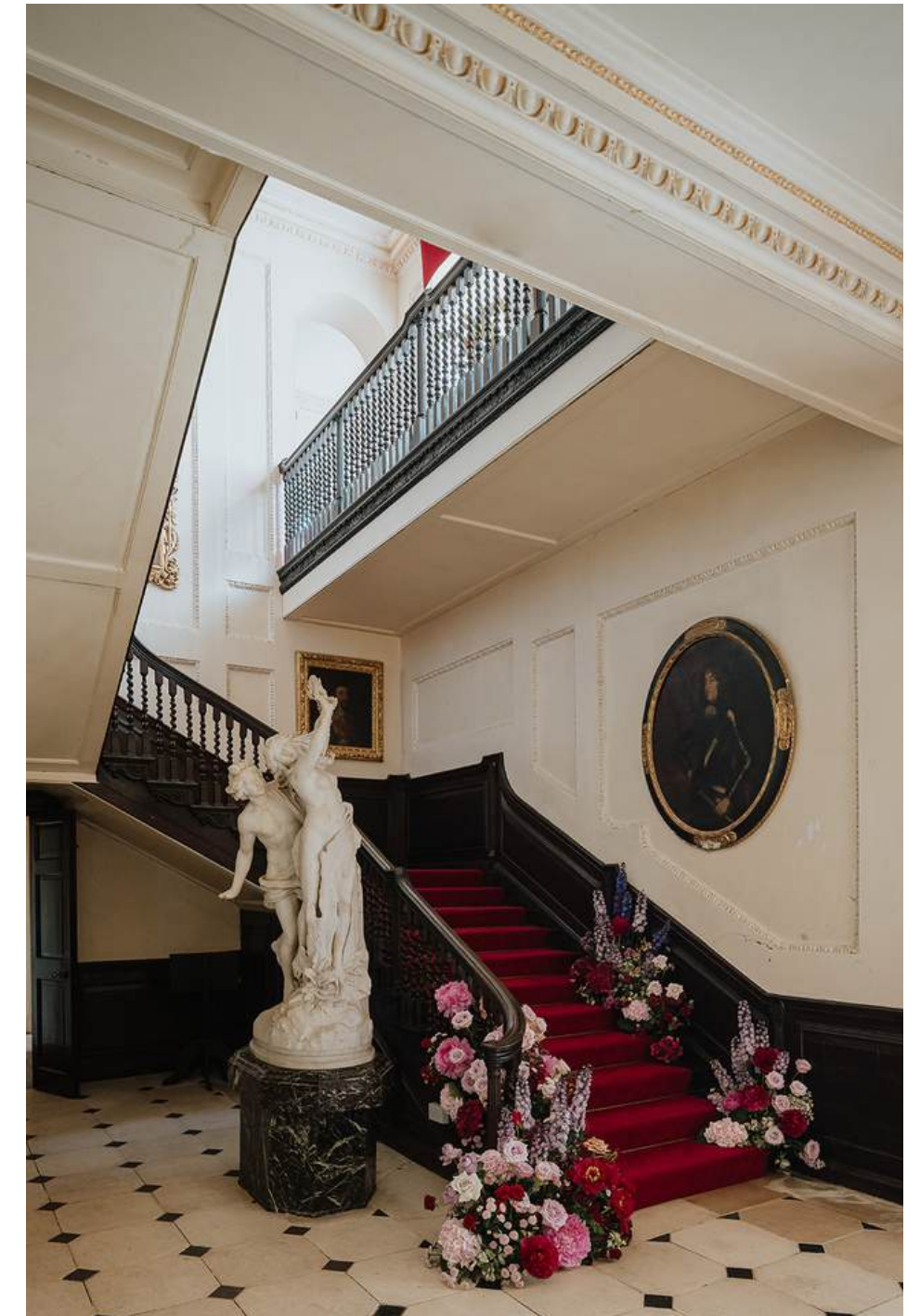
— your award-winning wedding wingwomen x



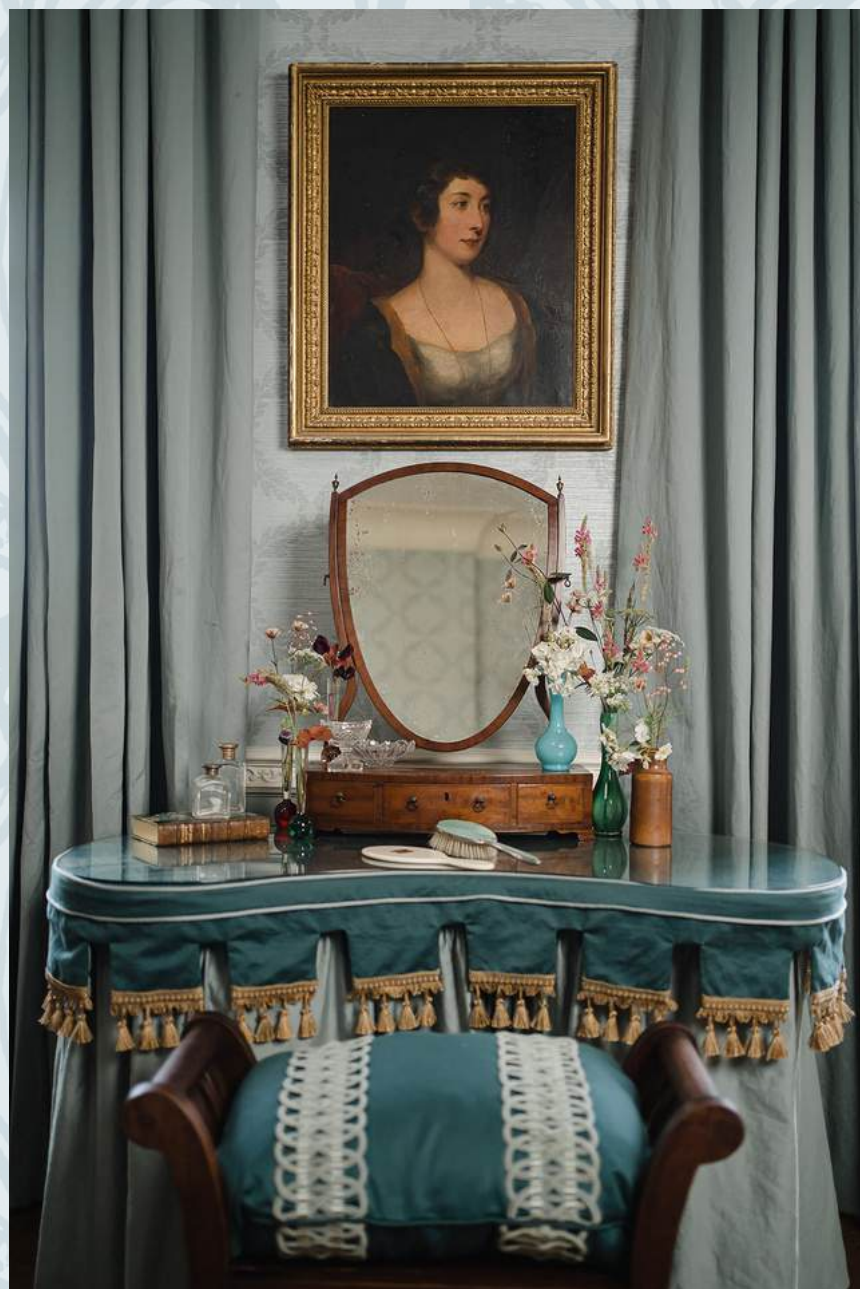
Pylewell House

Yours for the Weekend

Pylewell is charmingly eccentric and full of surprises. Think quirky details, lush gardens, sea views, and cozy corners to sip champagne in. It's got ten gorgeous bedrooms for your nearest and dearest (plus a three-bedroom penthouse for the VTPs). Space to host 200 guests, including kids and dogs. From pre-wedding dinners to post-party brunches, our house is yours to make magic in.

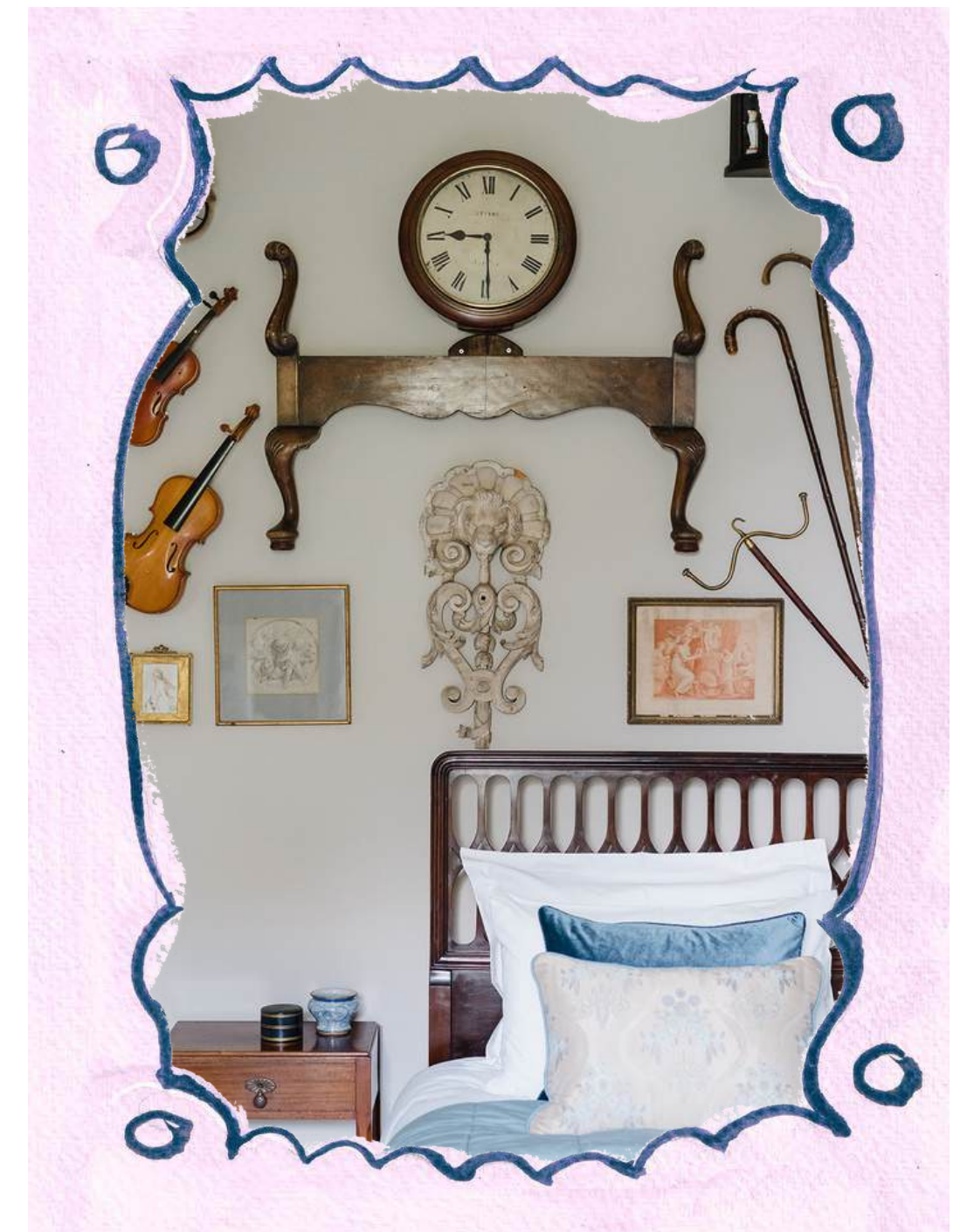


Entrance Hall & Drawing Room



Emma and Hermione, two of our quirky bedrooms on the first floor





Our penthouse has its own kitchen, living room and is dog friendly



Ceremonies

We are spoilt for choice with 4 ceremony spaces

Main Sail – which can seat 180 – providing shade for scorching days and cover for wet weather. It boasts gorgeous sea views!

Circular Gardens – framing the house or sea view. More intimate, perfectly symmetrical – our fave in spring and surrounded by pink rhododendrons.

By the Black Gates – for a complete blank canvas.

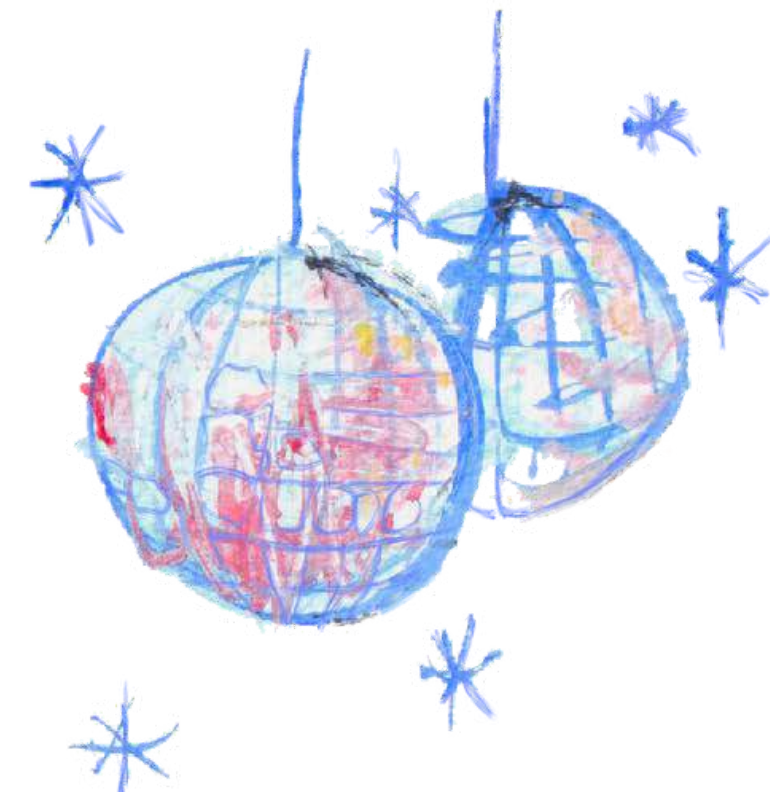
In the Main House – in our romantic and classic drawing room; licensed for 130 seated.





Sea views under the sail or an intimate ceremony on the circular lawn





Your Party Playground

This is your space to style exactly how you want. Think floor-to-ceiling glass, a built-in bar, a huge dance floor, and all the essential furniture included. Plus, we let your suppliers have access the day before, so everything is set up stress-free before your big day.

Bonus: Book in our “supplier sesh and budget brainstorm”—basically a power hour where we share our little black book of trusted legends and insider tips.









The Grounds, balustrade, south park, the beach







58 acres of South park, leading down to our private access beach





Wander through rambling gardens, explore acres of parkland, and enjoy sea views with private beach access. From golden hour strolls in South Park to visits to our Victorian greenhouses—you'll have the whole place to yourselves, so make the most of it.





We welcome you back for 2 supplier site visit, for scoping out photography locations, floral brainstorming and table- designing!





Catering

Delicious dishes, fabulous feasts, and joyful, shared tables.

We don't offer set catering packages. Instead, we work with four handpicked caterers—two local, two London-based—who each bring their own flavour, creativity, and flair to your wedding feast.

From fine dining to patisserie bars, seafood stations, cocktails and canapés (or something totally unexpected), these teams are all about imaginative, ingredient-led menus and beautiful presentation.

Good to know:

- Prices typically start from £130 per guest, depending on menu and caterer
- You'll contract and pay your chosen caterer directly
- All our preferred partners can help to dress tables, and will hire your linen, crockery, glassware in and arrange all the little details.
- You can bring all your own booze- let your caterers chill, serve and take care of it all! From fizz, cocktail hour to a full evening bar.



It's all included

The Pavilion: Your glass-fronted party space, fully kitted out and ready to go

The Setting

- Bespoke pavilion with panoramic sea views
- Fully heated and cold air extraction
- Dance floor, bar, kitchen + chill-out lounge area
- Pavilion terrace with festoon lights & rattan seating (indoor option for colder months)
- Music licence until midnight

For Your Day

- Early access from 11am the day before (for you and your suppliers)
- 25 rustic trestle tables & chairs (seats 150, space for 200 total)
- Two easels for seating plans
- PA system for speeches
- Electric piano
- Built-in bar (holds 200 bottles)
- Soft bar furniture + 3 high tables
- 4 chandeliers (ready to dress with your flowers)

The Extras

- Luxury loos, toiletries + cloakroom with coat rails
- Disabled access & toilet
- Two outdoor chimeneas (logs included, weather dependent)





The best view in the house from our penthouse roof terrace

The House

- 10 unique bedrooms (9 en-suite)
- Check-in from 3PM, check-out at 11AM
- Penthouse suite with kitchen, lounge & terrace (dog friendly for 2)
- Extra bedrooms for Sunday events available (just ask!)
- Roaring fires in colder months (wood supplied)
- Unlimited tea, coffee & a plentiful breakfast buffet
- Use of study or drawing room for pre-wedding dinners

The Grounds

- Full run of the house, gardens & South Park
- Access to lake, beach & greenhouses for photos
- Sunset strolls and golden hour shots encouraged
- Circular balustrade bar (great for mingling!) and sail bar behind the house
- On-site parking for all guests and suppliers

Ceremony & Support

- Outdoor sail structure (licensed for ceremonies, April–Sept)
- 150 wooden chairs for outdoor set-up
- Indoor wet-weather option in drawing room (licensed for 130)
- On-site event manager, night porter & house host throughout.



Pricing

No hidden costs, extras or add-ons. We love to keep our pricing super simple and transparent.

Weekday
(Wed–Fri)
Feb, Mar, Apr, Oct, Nov

£10,000

Bedrooms optional £250 per
room per night (min 5)

Weekday
(Wed–Fri)
May–Sept, Dec

£13,000

Bedrooms optional £250 per
room per night (min 5)

Weekend
(Fri–Sun)
Feb, Mar, Apr, Oct, Nov

£18,500

Includes 2 nights' hire with
all bedrooms

Weekend
(Fri–Sun)
May–Sept, Dec

£24,000

Includes 2 nights' hire with
all bedrooms

Midweek bookings are more flexible – bedrooms are optional. Weekends are in higher demand, so bedrooms are included in the price

Corkage: £15 per adult (wedding breakfast) and £7 per evening guest.

Prices include VAT (catering and drinks not included)



Sunday Events

Sunday Events

Make a Weekend of It. Whether you're planning a mellow brunch, an alfresco BBQ, or just want to keep the party going a little longer, we offer three relaxed ways to extend your stay.

Option 1 – Sunday event + extra night stay

£8,450

Host a Sunday gathering with brunch or lunch, keep the pavilion until 6:00pm, and have all bedrooms for a third night. Guests head home Monday morning after breakfast.

Option 2 – Sunday event only

£6,000

Host a Sunday celebration without the overnight stay. Guests check out by 11:00am, and the day wraps up by 6:00pm.

Option 3 – Bedrooms only (for offsite plans)

£4,000

Heading offsite for one last hoorah? Keep all bedrooms for a third night. Everyone can return to sleep, with a night manager on hand and breakfast served as usual.



Prices include VAT (catering not included)

Kind Words

Pylewell really was the most amazing place to get married but it is the team that takes it beyond our wildest dreams, we really can't put into words how helpful and special Mel made our wedding!

Holly and George, September 2024.

Just book it. You'll never regret it. Pylewell Park is a dream venue, and Aby and the team is simply incredible. They'll take care of everything, so you can focus on enjoying the best day of your life.

Emily and Gareth, December 2024.

Mel and Nicole, we were blown away by how smooth sailing everything went, and how you calmed our nerves the whole weekend. You made everyone feel so welcome and us like absolute stars.

Elena and Will, July 2024.



MORE KIND WORDS FROM OUR COUPLES [HERE](#)



Mel- Our head of events and Pylewell bride November 2019

Nicole- Our events wingwoman and Pylewell bride July 2022

Aby- Our events wingwoman and Pylewell bride to be.....December 2025!



Inspired? We are too!

Let's plan something unforgettable together.

We're wedding-obsessed and here to support you from day one—whether that's moodboarding on Pinterest, recommending suppliers, or just keeping the calm on the big day.

You'll get a team who loves the details, gets your vision, and genuinely can't wait to bring it all to life.

CONTACT

info@pylewellpark.com

01590 670 001

pylewellpark.com

@pylewellpark

ADDRESS


Pylewell House

Pylewell Park, East End

Lymington, SO41 5SJ

Drop us an email or give us a call where we can pop something in the diary for a viewing. We can also advise available dates at this point.

Mel, Nicole, Aby



“This venue doesn’t whisper luxury, it shouts
across The Solent”

The Venue Experts

“Most Glam place to say ‘I do’ in Hampshire”

Tatler

“Most stunning UK wedding venue”

Elle Magazine

“A dream wedding venue”

Avesso Magazine

“The best outdoor venues in the UK roundup 2025”

The Wedding Edition

Curious to see more?

Browse real weddings on our [blog](#) and [YouTube channel](#)