

—
WHERE BUSINESS
& LEISURE MEET

MERCURE
HOTEL

LONDON EARL'S COURT

YOUR HOME FROM HOME

Mercure's London flagship venue.

Welcome to Mercure's new London flagship hotel and conference centre in Earl's Court. Where our mantra of 'Locally Inspired' is reflected in the design ambience, menus, and meeting spaces. Mercure Earl's Court is unique, curiously curated, and comfortable - drawing inspiration from London and Londoners. Individual and made with local flair.

The Mercure philosophy centres on travellers looking for a local and authentic experience. We offer room types that cater to all guests, with amenities including refreshments, Chromecast TVs and Nespresso machines. Grab a bite at Barnaby's, where you will find home dining with a twist, using overseas cooking methods and spices.

Checking in is swift and simple, you'll soon be on the way to your room.





At the heart of the décor is the Doctor Who TARDIS which inspired the police-box-blue wardrobe and amenity station.



A NEW ERA FOR EARL'S COURT

Rebranding and refurbishment.

In July 2024, we rebranded and officially became Mercure London Earls Court, celebrating the completion of a completely refreshed dining and public space experience. This transformation has given the hotel a brand-new identity, blending local history with modern design to create a warm, welcoming space where guests can truly feel at home. Whether you are here for work or leisure, we've crafted a stay that's both authentic and unforgettable, right in the heart of south-west London. With a perfect mix of 226 Ibis rooms and 282 Mercure rooms, our newly completed hybrid hotel is the perfect choice for mid-sized to large residential groups.



508

Bedrooms & suites



3

Dining areas



15

Event spaces



STAY IN STYLE



THE FOUR-STAR DIFFERENCE

Mercure now open at Earl's Court.

With the newly regenerated 'Layers of Time' themed rooms inspired by the iconic Tardis from the long-running BBC TV series Doctor Who, the refurbished and rebranded 4-Star Mercure hotel rooms, including Tom Dixon mood lighting, cater for travellers looking for a local and authentic experience. We offer room types that cater to all guests, with amenities including refreshments, Chromecast TVs, and Nespresso machines.

Grab a bite at Barnaby's, where you'll find home dining with a twist, using overseas cooking methods and spices.

You can always take advantage of Mercure's 24-hour room service. The knowledgeable Guest relations team can help you 'discover local' with sightseeing advice and are on hand assist guests with travel arrangements. The hotel reception can also arrange car rental and dry-cleaning services for you.



282
ROOMS



CAR
PARK



RESTAURANT
AND BAR



ROOM
SERVICE





A NEW STANDARD FOR 3-STAR

Ibis Earl's Court refurbishment.

Ibis London Earl's Court provides guests with a warm welcome, spacious, and comfortable accommodation and convenient amenities. This three-star hotel features 226 guestrooms, including a mix of double, twin, and accessible rooms, a conference centre, use of Barnaby's Kitchen & Lounge and on-site parking, it offers an ideal base for both business and leisure travellers.

We offer a 24-hour reception and information desk as well as a 24 hour snack service. All our spacious and comfortable bedrooms are en-suite and equipped with environmentally friendly air-cooling, tea and coffee facilities, hairdryer, direct line telephone, WI-FI access, TV and radio channels.



226
ROOMS



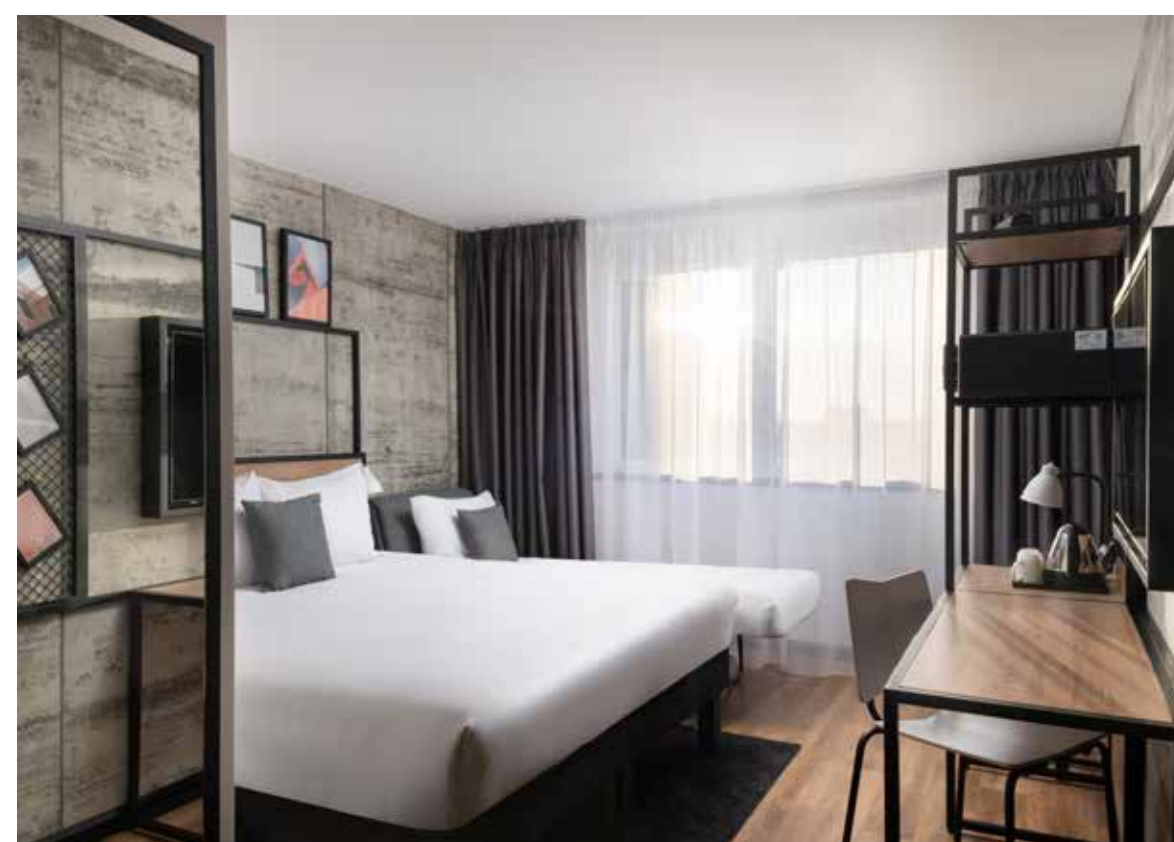
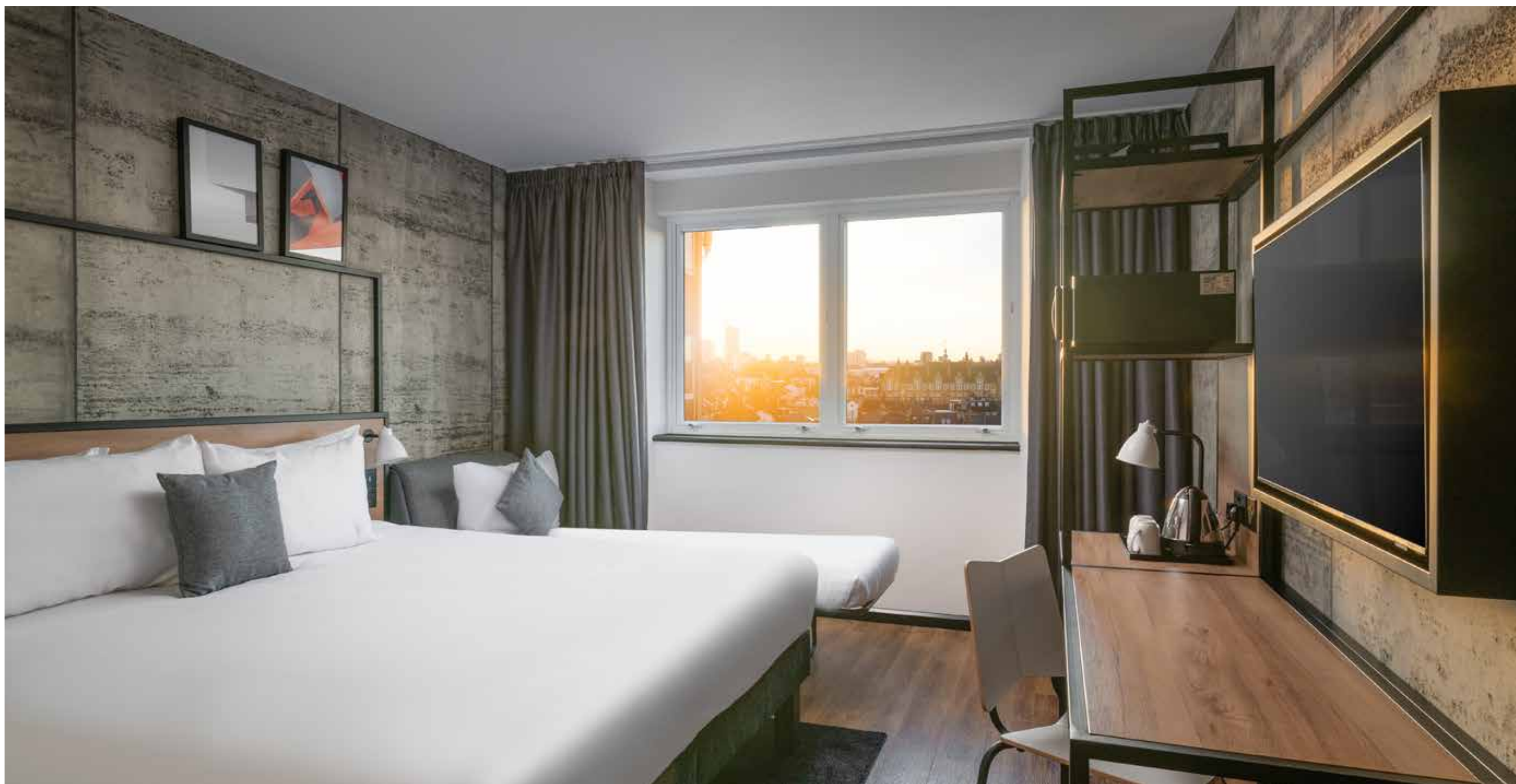
CAR
PARK

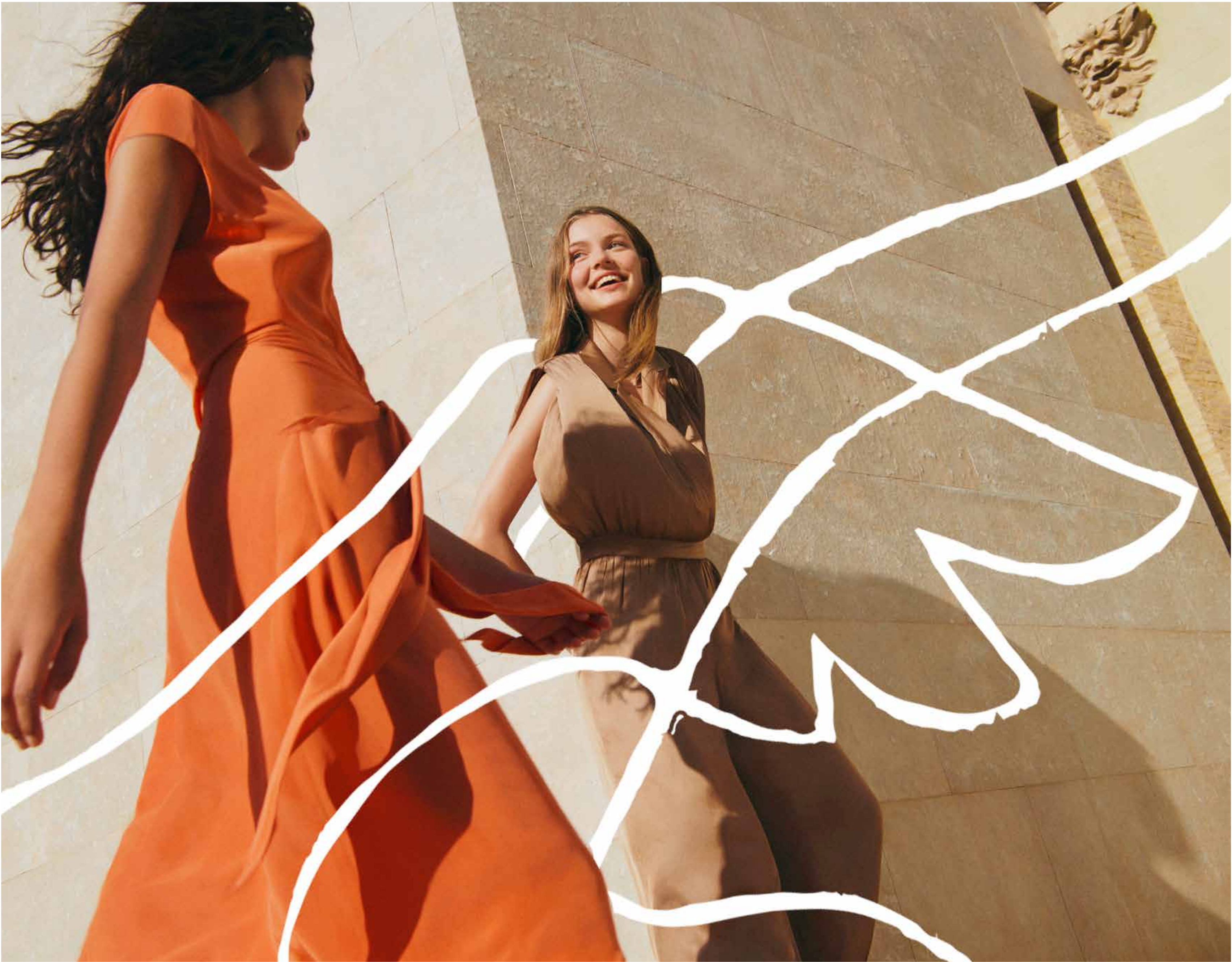


RESTAURANT
AND BAR



24-HOUR
RECEPTION





SPACES TO SUIT

A REMARKABLE LANDMARK VENUE

For events that really stand out.

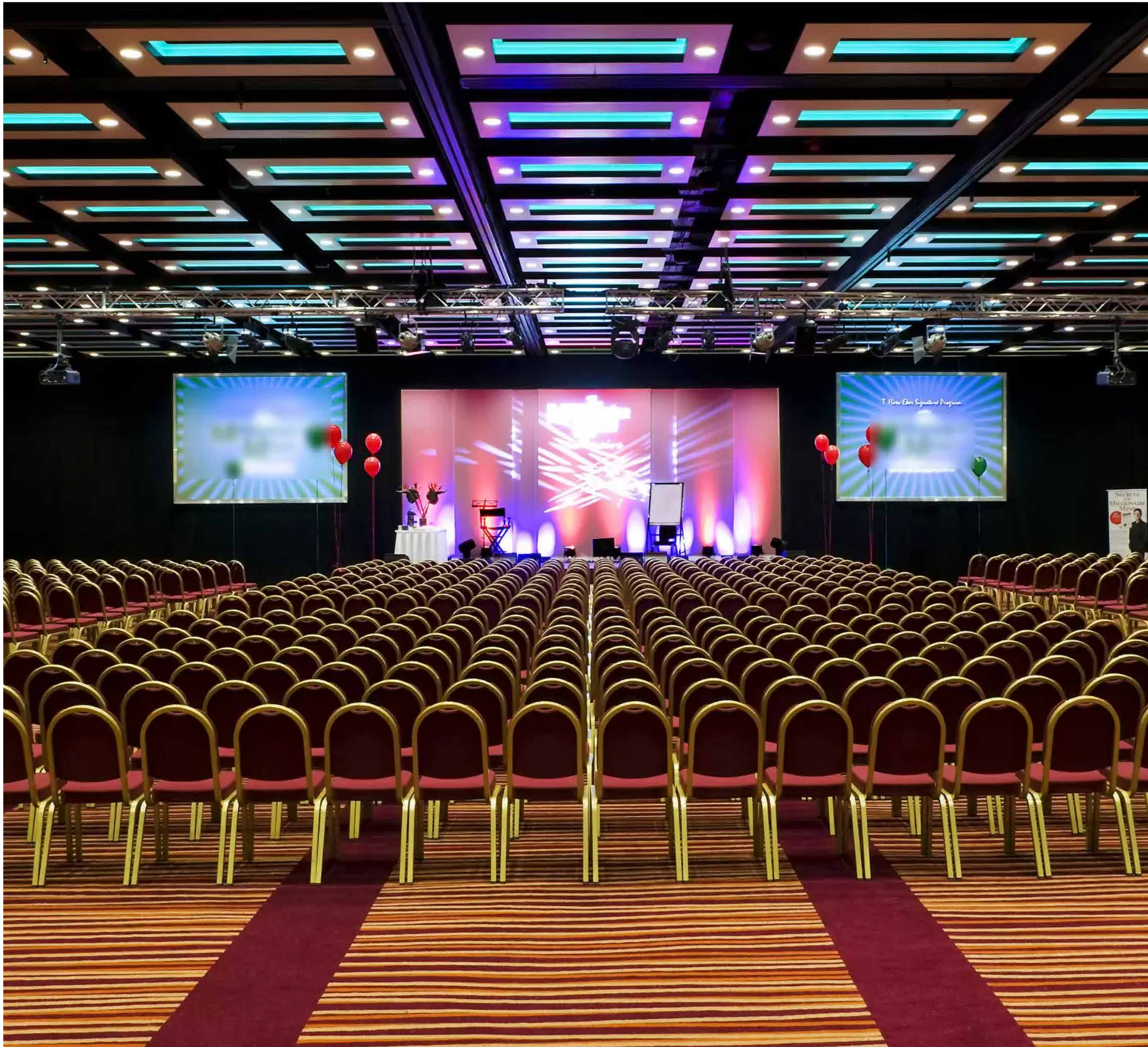
At Mercure Earl's Court London Suite you really can think big - conference, expo, trade fair AGM, presentation or rally. The whole package, the ultimate 'machine for meeting in'. The expansive, purpose-built venue space with modular and mood technology, connected breakout rooms, branded hospitality and two hotels plugged directly into the building is once again ready for any eventuality.

Spacious, versatile, state-of-the-art, service-focused team, inclusive. All attributes you can apply to your next event with us. London Suite offers formidable flexibility to adapt to any event so planners can choose among many possible configurations, split, divide and create a conference space that fits their company needs.

Between our large event capability, technology, service delivery and award-winning team, we pride ourselves in delivering a unique, supportive, collaborative and competitive event experience right in the heart of west London.



Open up a world of possibilities to any event and experience one of the most versatile ballrooms in London.



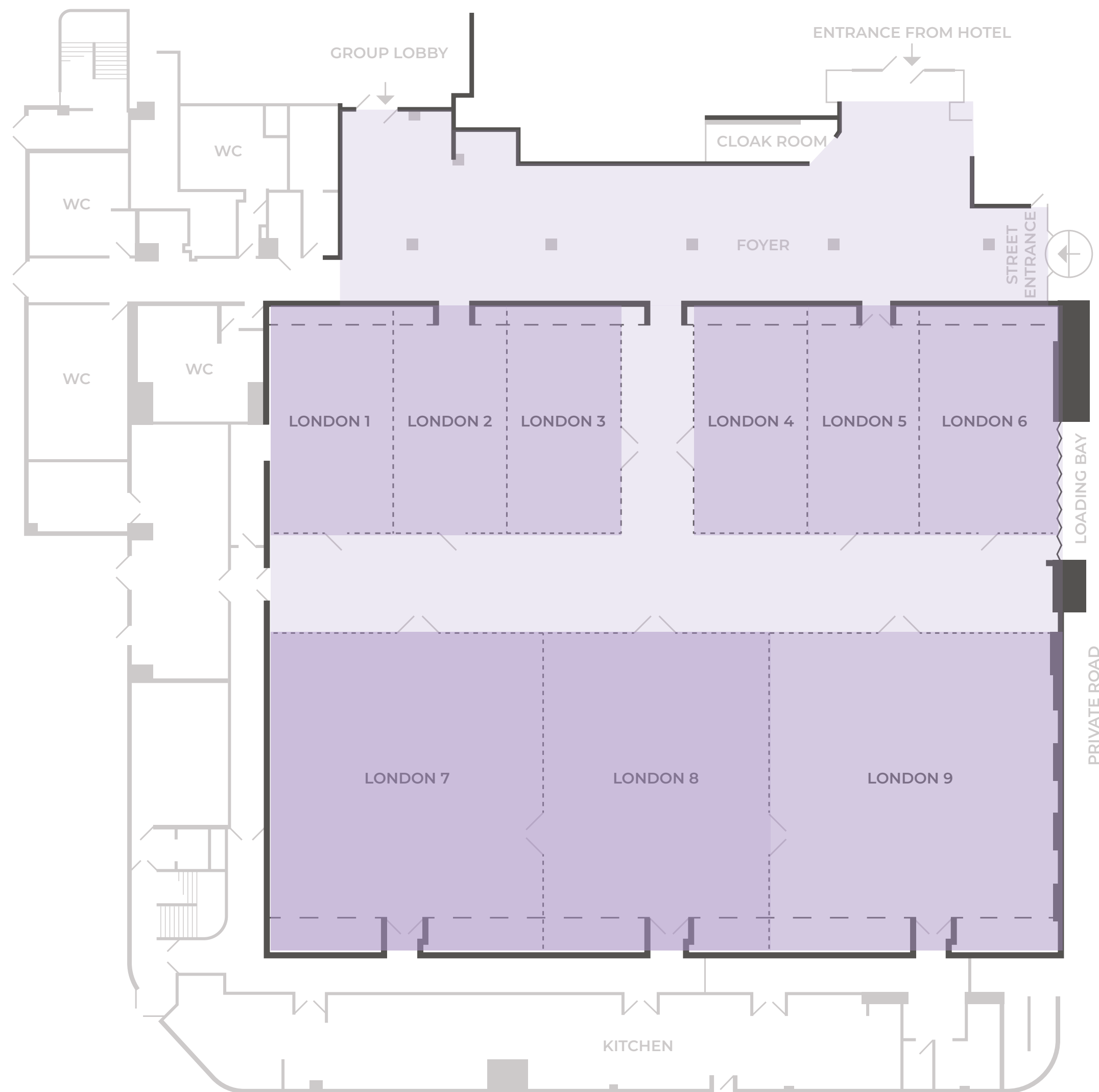
SCALE-UP YOUR AMBITIONS

It's showtime.

Our London Suite is the most versatile ballroom and can be cleverly partitioned to form a range of different room sizes. It boasts over 1,200m² of space and is the most ideal choice, whether you are looking for an exhibition space, a meeting, an award ceremony, Christmas party or a conference venue in London.

In addition to our landmark ground floor space, we also have 5 further newly refurbished Mercure meeting rooms on the 2nd floor of the hotel. The largest of these accommodates up to 50 guests in theatre style. There are 3 well-appointed 'Park' rooms that can be configured for up to 12 people in boardroom style (one with an attached lounge area) and a further room suitable for up to 8 guests.

Modular spaces to host plenary conference sessions or set an amazing décor for an evening dinner.




1,260
 Sqm of space

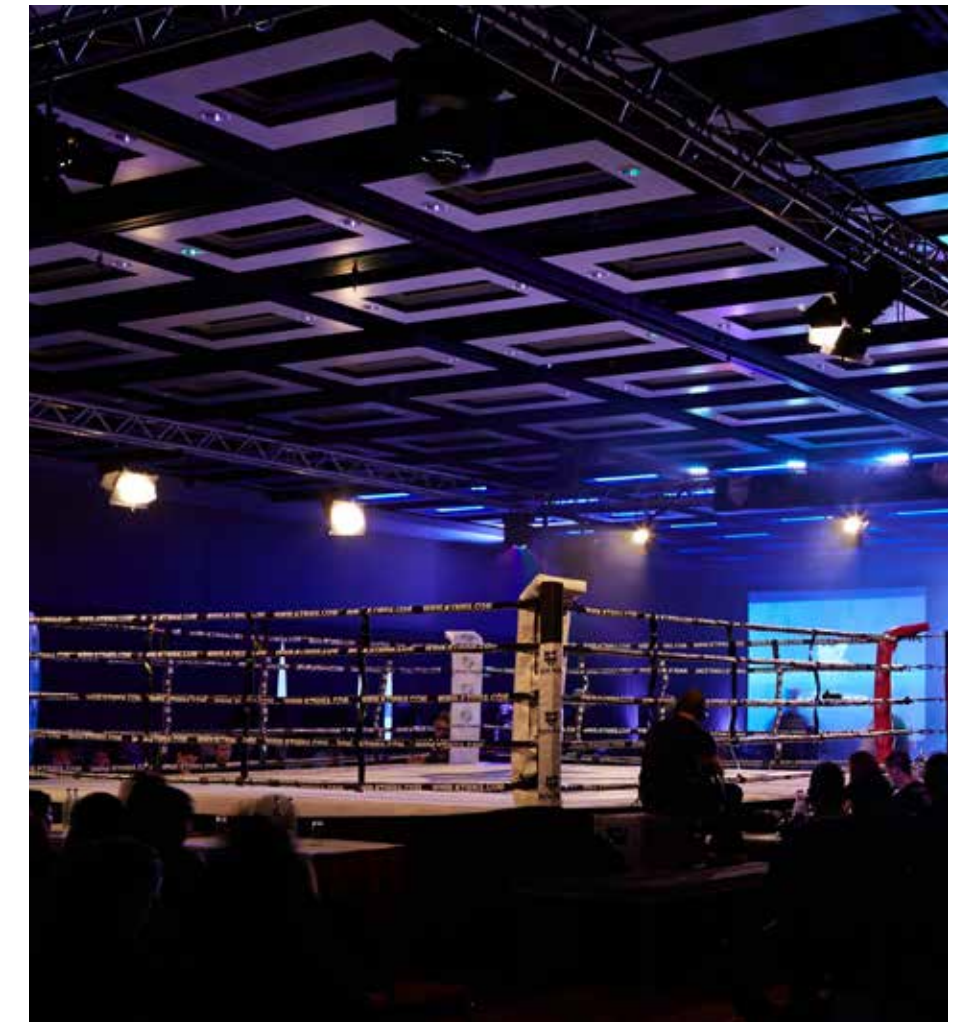

1,200
 Guest capacity

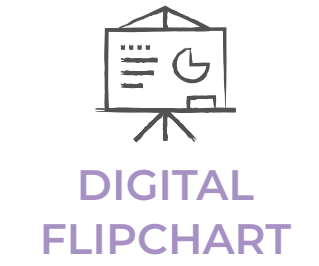
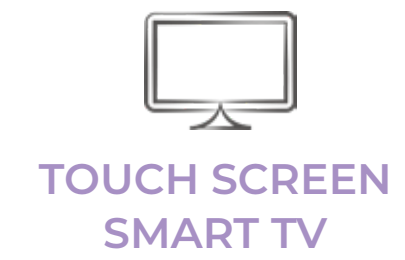
MODULAR SPACE

Capacity

| ROOM NAME | THEATRE | CABERET | CLASSROOM | ROUND DINNER | ROUND DINNER DANCE | RECEPTION |
|----------------------|---------|---------|-----------|--------------|--------------------|-----------|
| London Suite | 1,200 | 640 | 750 | 800 | 800 | 1,200 |
| London Foyer | - | - | - | - | - | 250 |
| London 1/2/3/4/5/6 | 60 | 32 | 24 | 40 | - | 60 |
| London 7 | 200 | 96 | 80 | 140 | 100 | 200 |
| London 8 | 160 | 80 | 60 | 100 | 70 | 160 |
| London 9 | 200 | 96 | 80 | 140 | 100 | 200 |
| London 1+2+3 / 4+5+6 | 140 | 104 | 70 | 130 | 80 | 150 |
| London 7+8 | 400 | 180 | 150 | 220 | 180 | 400 |
| London 7+8+9 | 550 | 384 | 250 | 400 | 300 | 550 |

Click Room to view more





SPACES TO MEET

On our 2nd floor, newly refurbished Ibis guestrooms and Mercure meeting rooms meet. This is great for breakout sessions from events on the ground floor and gives smaller residential groups the opportunity to book the meeting rooms and the 2nd floor guestrooms - providing exclusivity, privacy and security for high-profile sports teams, entertainment tours or VIP clients.

The diverse portfolio of London Suite meeting and breakout spaces along with the hotel bedrooms on the 2nd floor provides an ideal self-contained solution for residential seminars for 30 to 50 people. Walking to a meeting room after waking up has never been so efficient!



Capacity

| ROOM NAME | THEATRE | CABERET | CLASSROOM | ROUND DINNER | BOARDROOM | ROUND DINNER DANCE | RECEPTION |
|----------------|---------|---------|-----------|--------------|-----------|--------------------|-----------|
| Hyde Park | 50 | 40 | 25 | 40 | 35 | 80 | 80 |
| Regents Park | 12 | - | - | - | 10 | 15 | 12 |
| Victoria Park | 12 | - | - | - | 10 | 15 | 12 |
| St James' Park | - | - | - | - | 8 | - | 8 |
| Greenwich Park | - | - | - | - | 10 | - | 12 |

[Click Room to view more](#)



YOUR EVENTS, YOUR REWARDS

Earn loyalty points with our ALL Meeting Planner programme.

2 euros spent = 1 Reward point + 1 Status point

- Get rewarded whenever you plan a professional event with the ALL Meeting Planner.
- Join the ALL Meeting Planner and earn points every time you organise an event.
- Book workspaces wherever you need, whenever you want. 2,400 hotels across the world, from luxury to budget-friendly.
- For all your events and in all our hotel ranges, spend 2 euros and get 1 Reward point and 1 Status point.

Flex to fit

Finance future events using your points. Or use them for your next trip, for concert tickets, or a match. Your points, your choice. You can also share your points with other members of ALL.

Points, whenever

There are no blackout dates on Reward points. Use them whenever you choose. There are no expiry dates on your points. No rush, no fuss. Plan more, earn more. Earn even more Reward points whenever you plan an event.

Free membership

It's quick and easy to join the ALL Meeting Planner.

all.accor.com





EVENT PLANNING FOR SUCCESS



TURN YOUR EVENT INTO AN OCCASION

Making it all happen.

We understand that two events or two clients are never the same hence why customisation in everything is a must leading to every event being both challenging and exciting. We can of course cater for any event; sample menus are altered as much as possible to the client request and personal preferences. The broad experience of our head chef allows him to take his passion for food into themed event for different cuisine.

With facilities such as an in-house surround system, extravagant LED lighting capable of adapting to the colour combinations of the clients' needs, accommodating staff members to cater to the demands of the clientele, and incredibly responsive professionals to provide complete support from enquiry stage to planning, you can expect value for money with the aforementioned services that will turn your event and conference wants from a blank canvas to an unforgettable experience.

DELIVERING EVENTS

Conferences

The London Suite is the most flexible large conference and event space in west London. The main event hall can be partitioned to form a range of different room sizes, and the in-built creative lighting produces a dazzling night ambiance. All divisions have a building management system equipped with sensors to allow pre-programmed air conditioning, sound levels, lighting to create a perfect ambiance.

The venue is also fitted with 1GB fibre optic line dedicated to the events space which allows capturing a high number of cyber security events and IT sector. For corporate hospitality events, we can accommodate parties of 20 to 800 for sit down events. The venue also hosts a dedicated banqueting kitchen to answer the requirement of any hospitality event. Additionally, the kitchen can be hired-out for self-catering events.

Being an open space, anything can be built-up from mobile bar, dance floor, any entertainment features while our pre-function room can host any welcome drink for up to 250 guests.

Whether you are looking for an exhibition space, a meeting, an award ceremony, a corporate summer, Christmas party or a conference venue in London, our award-winning team will be certain to deliver the event you need and want.

Exhibitions

Whatever your exhibition requirements are, our London Suite can accommodate them. Our spacious flexible exhibition hall offers lofty ceilings and an uninterrupted area to display your exhibits. Set-up and other logistical matters are simple, with 24-hour access to our generous ground-floor loading bay, which has previously welcomed double-decker buses, cars, and even a tank (without a cannon)! The London Suite can also stage a TV event or become a sporting venue.

Galas & Weddings

For galas and weddings, London Suite offers a capacious pillar-free ballroom and is ideal for hosting award ceremonies, gala dinners or wedding receptions. Spacious enough the ballroom caters for up to 800 guests while the high ceiling will permit the most ambitious set-up.

Business meetings venue

On our second floor, the smaller syndicate meeting rooms can accommodate from 2 people to 50 and are ideal for board meeting, training, hospitality lounges or break-out rooms.

Social Events & Celebrations

From a private birthday to a larger banquet, the London Suite has a range of spaces to suit your social event. Whether it is a birthday dinner or a contemporary anniversary, we can offer private rooms or a semi-private area in Barnaby's Lounge & Bar.

Product Launches

At Mercure Earl's Court we have a very useful loading bay which easily facilitates vehicles and large props access to the venue for large scale product launch type events.



ACCESS ALL AREAS

Purpose built, efficient logistics.

Many clients love how easy loading and unloading is made with our ground floor loading bay and direct easy access into the London Suite foyer. We have had a red double decker bus, a black cab, a tank and fancy cars drive into our venue through the ground floor loading bay. Being a pillar free venue with 5-metre-high ceilings, the venue has been used as a blank canvas for showcase dinners with a jungle theme (rolling out their own carpet!), a dinner with a beach theme (with their own beach bar and palm trees), for international concerts and for a boxing event.

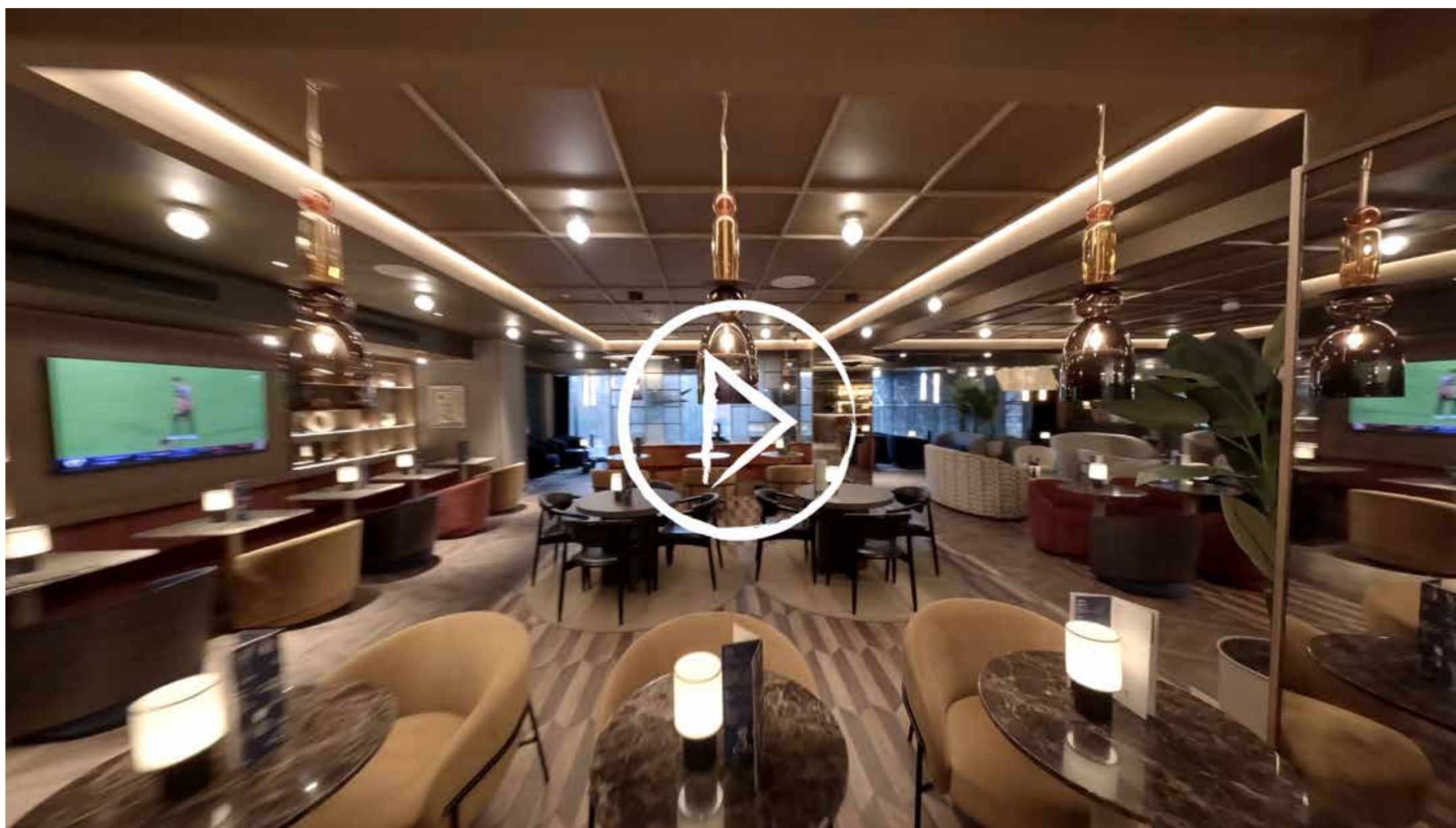
When it comes to combined conferences and exhibitions the adaptability of London Suite encourages clients to book way in advance. Regardless of which side sells better or if breakouts are needed, the space can be redesigned and constantly adapted to the ever-changing clients' briefs as the event dates approaches.





**DISCOVER THE
TASTE**

Grab a bite at Barnaby's,
where you'll find home
dining with a crafted twist.



BARNABY'S AT HOME

British dishes with a twist.

Barnaby's Kitchen & Lounge Bar is the on-site restaurant and bar at the Mercure London Earl's Court hotel. 'Barnaby,' is a traveller who, after years of global adventures, returns to London to enjoy his sixties at home. His travels have influenced both the design of the venue and the menu, blending classic British elements with international flavours.

The ambiance reflects his personality - sophisticated but warm, with a touch of nostalgia for his global escapades. The menu reinvents British cuisine with subtle inspirations from Barnaby's worldly experiences.

Barnaby's restaurant provides a stylish, relaxed atmosphere suitable for corporate drinks, private gatherings, or informal meeting including a semi-private area accommodating up to 15 people, making it ideal for intimate events or business discussions.



130
SEATS



SEMI-PRIVATE
AREA



À LA CARTE
MENU



BUFFET
BREAKFAST





LIVE LOCAL



The surrounding late-night streets will make your senses come alive. You'll love London for its buzz and bustle.



LOCAL AND LONDON

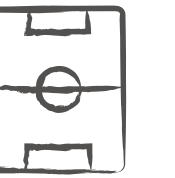
Nearby and a little further afield.

Earl's Court is a vibrant and historic part of London, packed with culture, famous landmarks, and exciting attractions - all just a stone's throw from Mercure London Earl's Court Hotel. For a world-class shopping experience, Harrods is just a short trip away. This internationally renowned luxury department store in Knightsbridge is a must-visit, offering everything from designer fashion to gourmet food and its famous Egyptian Hall. Whether you're shopping or simply soaking in the grandeur, it's an unforgettable London experience.

Sports fans will not want to miss Wimbledon, home to the world's most prestigious tennis tournament. Just a short journey from the hotel, the All-England Club offers guided tours and the Wimbledon Lawn Tennis Museum, where you can explore the history of the game and see trophies up close. Premier League football can also be enjoyed at Stamford Bridge home to Chelsea FC, and resting on the banks of the River Thames, is London's oldest football stadium Craven Cottage (Fulham FC), a must-see for any visitor or football fan travelling through London.

A quick trip takes you to Kensington Palace, once home to Princess Diana, nestled within the stunning Kensington Gardens. Stroll a little further and you will find yourself in Hyde Park, where you can take a boat ride on the Serpentine, explore historic memorials, or simply soak up the atmosphere of one of London's most famous green spaces. If museums are more your thing, you are in luck. The Natural History Museum, Science Museum, and Victoria and Albert Museum are all close by, offering everything from fossil dinosaur skeletons to cutting-edge fashion exhibits. And for a truly unforgettable evening, the iconic Royal Albert Hall hosts everything from rock concerts to classical performances and film screenings with a live orchestra.

The Mayor of London is reviewing an exciting development plan for the Earl's Court area, bordering on our doorstep. This will be 15 years in the making and will guarantee its long-term future as a vibrant west London community and experiential destination. The scheme will bring wonder to the area through the four pillars of nature, culture innovation and neighbourhood.



DISCOVER LOCAL

Inspired by London & Londoners.

At Mercure London Earls Court, we embrace Mercure's 'Discover Local' philosophy, which connects guests with the authenticity, culture, and flavours of our vibrant surroundings. Through our commitment to sustainability, local partnerships, and responsible hospitality, we ensure that every guest experiences the absolute best of London in a way that is both immersive and eco-conscious. Aligned with Mercure's 'Discover Local' ethos, we actively support and collaborate with local and organic suppliers, bringing the best of London's fresh, seasonal, and sustainable ingredients to our guests.

By sourcing responsibly, we

- Highlight the region's rich culinary heritage, allowing guests to enjoy a true taste of London.
- Reduce our carbon footprint by minimizing food miles and collaborating with ethical producers.
- Empower small businesses by fostering partnerships with local farms, dairies, and artisans.
- Ensure quality and sustainability, providing guests with fresh, organic, and responsibly sourced ingredients.
- Some of the local suppliers we work with are, London Cru Wines in West Brompton, Sipsmith Gin in west London and Dickenson's butchers in North End Road Fulham.

The Earl's Court hotspot offers the curious a friendly neighbourhood atmosphere, while just minutes away from central London.





Open your wings and you'll discover vibrant high streets, good pubs, trendy boutiques and epicurean restaurants.



GETTING HERE

Stay well connected.

Whether you are here for business or leisure, getting around couldn't be easier. Mercure Earl's Court is conveniently located near the M4 for access to Heathrow Airport and the motorway network. West Brompton Station provides Underground/Overground public transit to the rest of London. The hotel is only a short ride from London's greatest landmarks. As a result, it is the ideal location for UK and overseas visitors.

London Underground

Sitting at the edge of zone 1, West Brompton (3 mins walk) and Earl's Court (7 mins walk) stations are both within easy walking distance.

Driving

Mercure London Earl's Court is a quarter of a mile (400m) from the A4, providing easy access to the M4, M5 and M40.

Parking

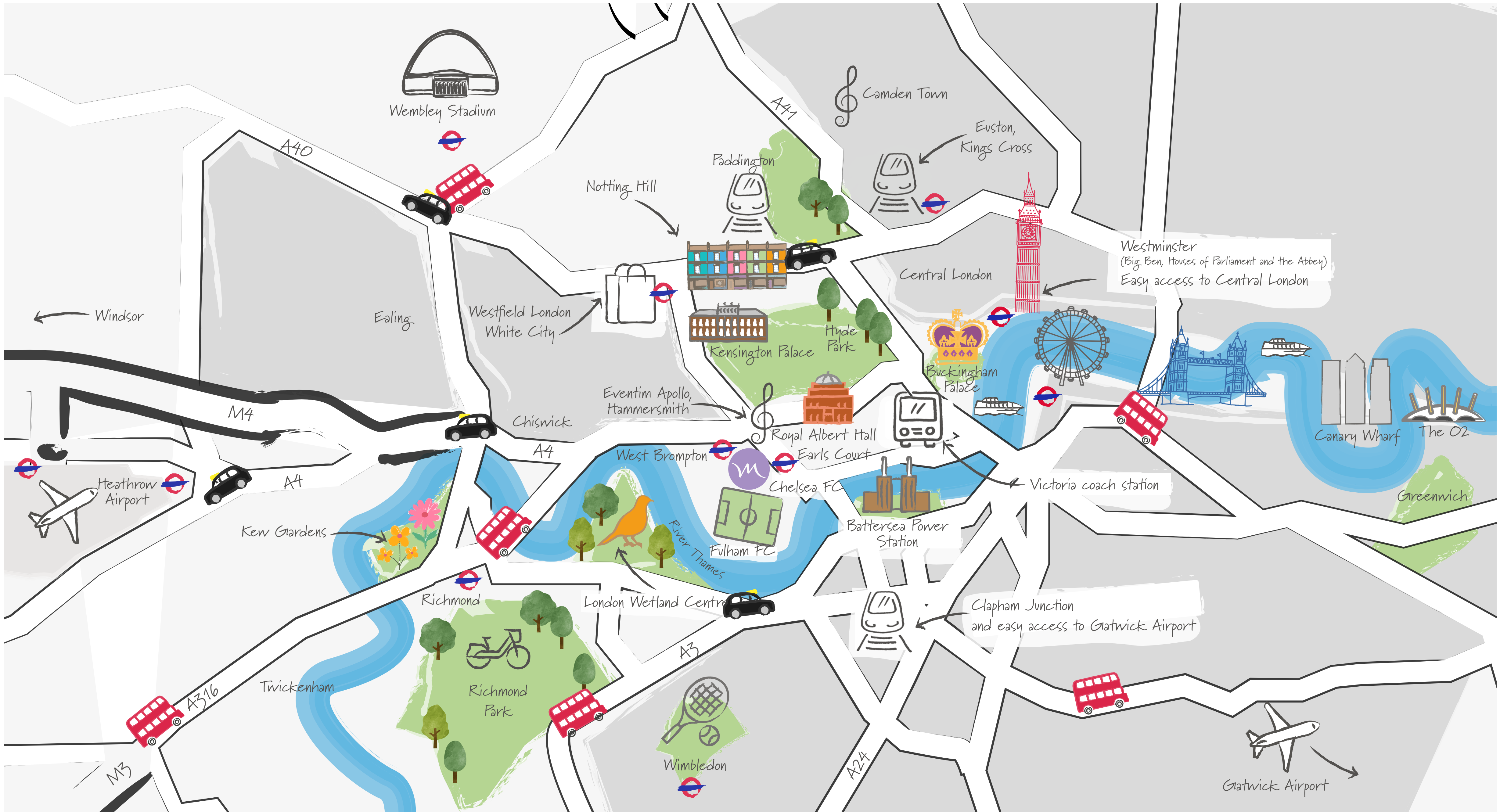
There is a car park adjacent to London Suite with 140 parking bays. Mercure London Earl's Court does not manage the parking so spaces cannot be reserved and may become full during busy events. Guests and delegates can benefit from preferential parking rates as follows:

| | |
|-------------------|--|
| Up to 2 hours £7 | Up to 9 hours £16 (£21 for non-residents) |
| Up to 4 hours £11 | Up to 12 hours £20 (£26 for non-residents) |
| Up to 6 hours £14 | Up to 24 hours (overnight) £26 |

Walking around the local area

Earls Court, with its long association with landmark exhibitions and events, has some great neighbours. Nearby you'll explore fashionable Notting Hill, home to the famous Caribbean carnival and the vintage or antique markets of Portobello Road, the interiors and boutiques of Fulham and Chelsea, Harrods of Knightsbridge and the Palace, museums and galleries of Kensington. Of course, The City and West End shops, theatres and architecturally iconic Westminster skyline are also within easy reach. A short ride on the handy District Line will take you to Wimbledon for the tennis, Putney, Chiswick or Richmond for the river, Ealing for the Blues Festival or Kew for the World Heritage Site gardens.







**IN THE
HEADLINES**



*“There’s more to this hotel than meets the eye.
An oasis of calm.*

Take time out in the Tardis.

The love-child of the two Accor brands delivers the best of both.”

GUILD



*“A hybrid hotel
positioned for success.
Plenty to satisfy leisure,
business and MICE
guests. A pick & mix
portfolio of spaces.”*

EVENT & POINT



*“A peaceful sanctuary, with high
end bells and whistles, fiercely
powerful shower and the sort of
ultra comfy bed that you dream
of waking in.”*

**THE SCOTTISH
Sun**



*“Our stylish Doctor Who-inspired room
was indeed a west London TARDIS.”*

ESCAPE



*“The highlight of my
stay was dinner in
Barnaby’s restaurant.”*

Yours



*“Mercure’s layers
of time generate
‘Doctor Whovian’
luxury.”*

BelfastLive



*“Barnaby’s
Lounge & Bar is
the place to kick-
back and chat.”*

THE NATIONAL



*“Outstanding attention
to detail everywhere.”*

EXPRESS

YOUR TRAVELS, YOUR REWARDS

ALL – Accor Live Limitless for hotel users.

A powerful loyalty program for travellers

- Discover a world of rewards, unique benefits and exceptional events.
- Experience the extraordinary.
- Mercure London Earl's Court invites you to discover a world of travel-related advantages, discounts, exclusive Accor hotel services, airline miles and partner discounts.
- Enjoy exclusive savings - Save up to 10% on bookings in more than 3,000 hotels.

Earn points

Be rewarded time and time again for your stays, outings, and visits to our restaurants and bars.

Redeem your points

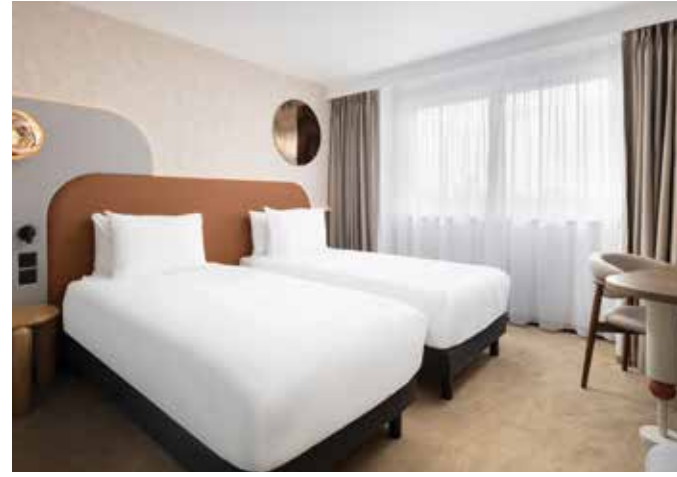
Make the most of your points. Whether it's stays, experiences or partners – the choice is yours!

Enjoy unique benefits

Depending on the number of nights stayed or points earned, your status is upgraded, unlocking even more benefits.

all.accor.com





LONDON'S PRIDE

Our awards and accreditations.

Liv Hospitality Design Awards 2025 for Interior Design Hotel – Midscale & Lifestyle and Interior Design City Destination. In 2023, 2024 and 2025, Mercure London Earl's Court proudly received the Green Key Certification, a prestigious recognition for excellence in environmental responsibility and sustainable practices within the tourism industry. This achievement reflects our ongoing commitment to eco-friendly operations, ensuring a greener and more responsible hospitality experience for our guests.

London Venue & Catering Awards 2024

- Best new or refurbished venue - Winner
- Best venue customer service - Finalist

London Venue & Catering Awards 2023

- Best venue for events with under 750 attendees - Finalist
- Most versatile London venue - over 800 attendees reception style - Finalist

Conference & Events Awards 2024

- Best venue customer service (over 500 theatre style) - Finalist
- Best convention centre - Finalist
- Best venue (for over 1100 attendees theatre style) - Finalist

Conference & Events Awards 2023

- Best large scale event venue - Bronze

Discover Fulham Awards

- Best customer service

LIV Hospitality Design Awards

- Best Interior Design Hotel – Midscale & Lifestyle and Interior Design City Destination



A SUSTAINABLE STAY

No guilty pleasures.

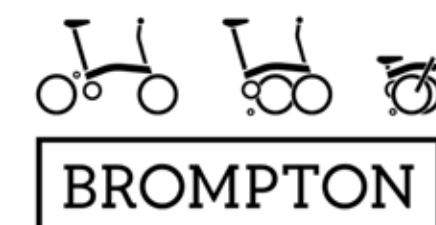
The London Suite is the perfect location for running a mindful and sustainable meeting. The venue is close to public transport to allow guests to arrive sustainably. Flexible walls, audio-visual control at your fingertips, tea & coffee facilities and retractable screens are some of the amenities seamlessly present throughout. Not forgetting complimentary Wi-Fi of course!

Mercure London Earl's Court Sustainability Actions

- Use of wooden key cards to prevent plastic use.
- Go Green, Skip the Clean Programme – Allowing the guest to contribute to Sustainability by receiving 100 points for not getting their room cleaned.
- At least 5 F&B products are Eco-labelled, Fairtrade Labelled or Locally produced.
- Hazardous Waste Policies are in place.
- Front office team trained on sustainable transportation and the nearest bike rental station.
- Green Key Certification from Green Key England achieved in 2023.
- A selection of Brompton folding bicycles are available for guests' use.



Green Key



MERCURE

HOTEL

LONDON EARL'S COURT

CALL +44 (0)203 988 8300
OR EMAIL H5623-SB@ACCOR.COM
TO DISCUSS YOUR EVENT REQUIREMENTS.

MERCURE LONDON EARL'S COURT,
47 LILLIE ROAD, LONDON, SW6 1UD