



---

ACCOMMODATION  
BROCHURE

---

*Six properties across four locations...*

WORTON

The Farmhouse  
~ Sleeps 22 ~

Stable Cottage  
~ Sleeps 4 ~

THRUPP

Manor House  
~ Sleeps 18 ~

Coach House  
~ Sleeps 12 ~

Dovecote  
~ Sleeps 2 ~

WOODSTOCK

Woodstock Manor  
~ Sleeps 16 + 2 ~

WOLVERCOTE

Hillcrest  
~ Sleeps 17 ~

A black, arched-top sign is mounted on a rough, textured stone wall. The sign features the words "THE" and "FARMHOUSE" in white, bold, serif capital letters. The word "THE" is positioned above "FARMHOUSE". The sign is secured to the wall with a small screw on the left side.

THE  
FARMHOUSE



# FARMHOUSE

## SLEEPS 22



Situated amongst stunning Cotswold farmland this property features an impressive internal courtyard, large western conservatory with two stunning external York stone patios, ideal for a BBQ in the summer months.

Relax in the soft seating of the long lounge equipped with wood burning stove and tinkle the ivories on the baby grand piano. Look out on to the sweeping farmhouse lawn, perfect for a picnic or two and garden games. The large fully equipped kitchen is the hub of the house, leading into the bright conservatory dining room.

The bedrooms are split over 2 floors with 3 bedrooms located on the ground floor. All bedrooms are elegantly designed and well-appointed; inclusive of towels and linens.



Onsite we offer a heated seasonal outdoor pool (please note pool opening times apply) and tennis courts which are available for shared use. Well behaved dogs are welcome at an additional cost.

The nearest train stations are Hanborough, 5 miles away and Oxford Parkway Station, also 5 miles away. All in all this impressive property is large enough to entertain many guests, whilst remaining warm and homely with plenty of charm.

The annex known as Stable Cottage is also available to hire at an additional cost. This can sleep an additional four guests. View further details [here](#).







## WHY CHOOSE THE FARMHOUSE?

- Beautiful Grade II Listed house, bursting with charm and character at every turn
- Perfect for entertaining, with large living and dining spaces, sleeping up to 22.
- 5 minute drive to the nearest train station; excellent access to Oxford & London.
- Located on the edge of the Oxfordshire Cotswolds, just a ten minute drive from Blenheim Palace.
- Swimming pool and tennis court onsite, just next to The Farmhouse (seasonal opening times apply)
- Sweeping lawn, internal courtyard and flagstone patio area perfect for drinks and dining.
- Awarded the VisitEngland Gold award, book with confidence that you will receive nothing but quality.
- Well behaved dogs are welcome to stay at the property at an additional cost



# FARMHOUSE FLOORPLAN

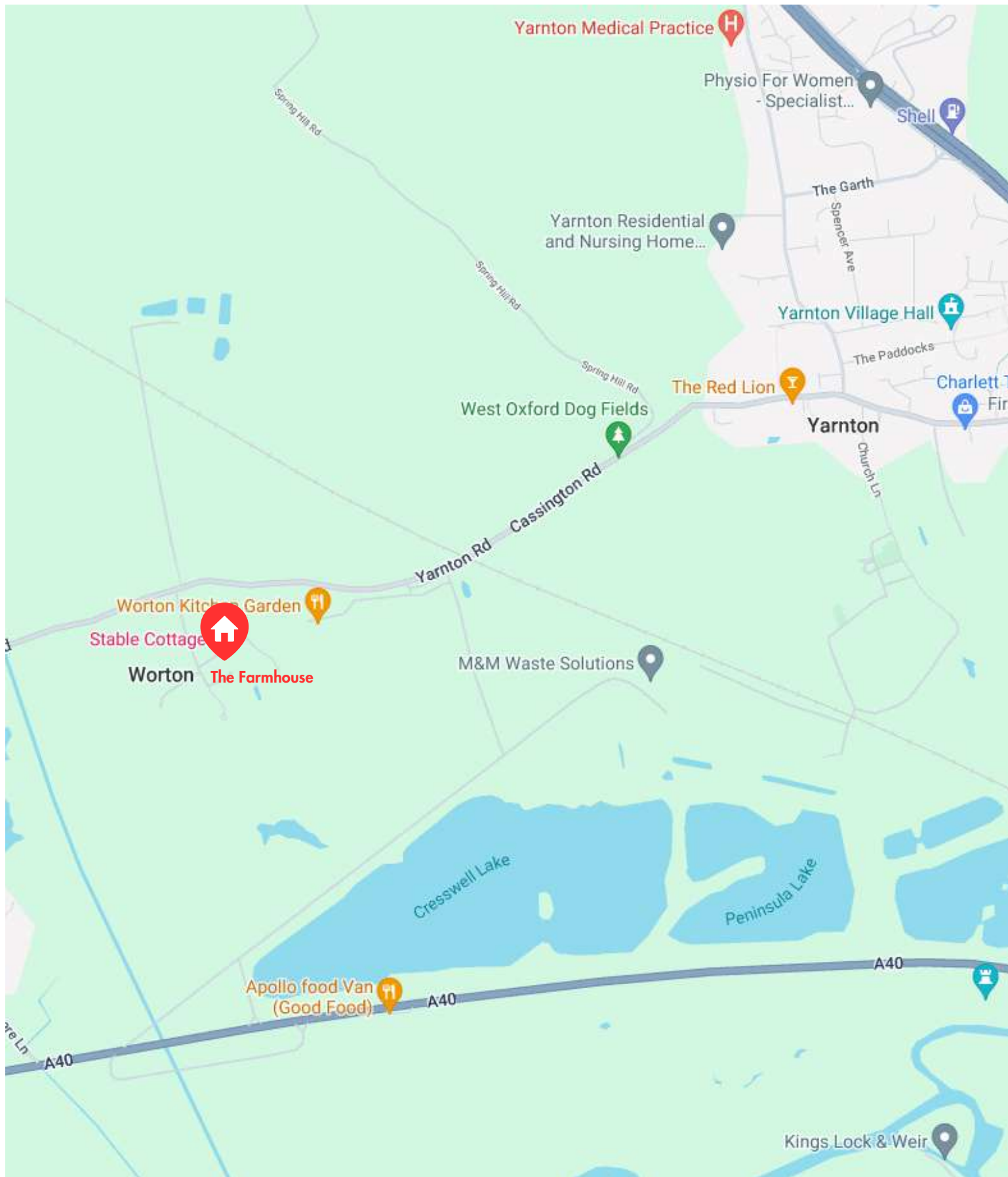


Ground Floor



First Floor











# STABLE COTTAGE

SLEEPS 4

This delightful two bedroom converted stable is situated in the beautiful hamlet of Worton, this property has been carefully and lovingly converted from an old stable block into a charming holiday cottage, sleeping four. It really is perfect for a family break.

Nestled by arable farmland it is a superb base for all of the wonderful activities in and around Oxfordshire. The famous Blenheim Palace & the town of Woodstock are only a short drive away.

The cottage is all on the ground floor. Open planned kitchen, diner and living room. The master bedroom is completed with an antique four-poster bed, along with one twin room and a shared bathroom. The cottage also has its own sunny south facing private garden and patio area complete with a BBQ.



Onsite we offer a heated seasonal outdoor pool (please note pool opening times apply) and tennis courts which are available for shared use. The nearest train stations are Hanborough, 5 miles away and Oxford Parkway Station, also 5 miles away.

Stable Cottage's charm, comfort and warmth make it a year-round favourite with everyone. If you just want to get away for an interlude of peace and privacy in the Oxfordshire Cotswold's, this is the property for you.





## WHY CHOOSE STABLE COTTAGE?

- Cosy converted stable, with four poster bed, charming beams and log burner.
- 5 minute drive to the nearest train station; excellent access to Oxford & London.
- Located on the edge of the Oxfordshire Cotswolds, just a ten minute drive from Blenheim Palace.
- Swimming pool and tennis court onsite (seasonal opening times apply).
- Awarded the VisitEngland Gold award, book with confidence that you will receive nothing but quality.
- Well behaved dogs are welcome to stay at the property at an additional cost.

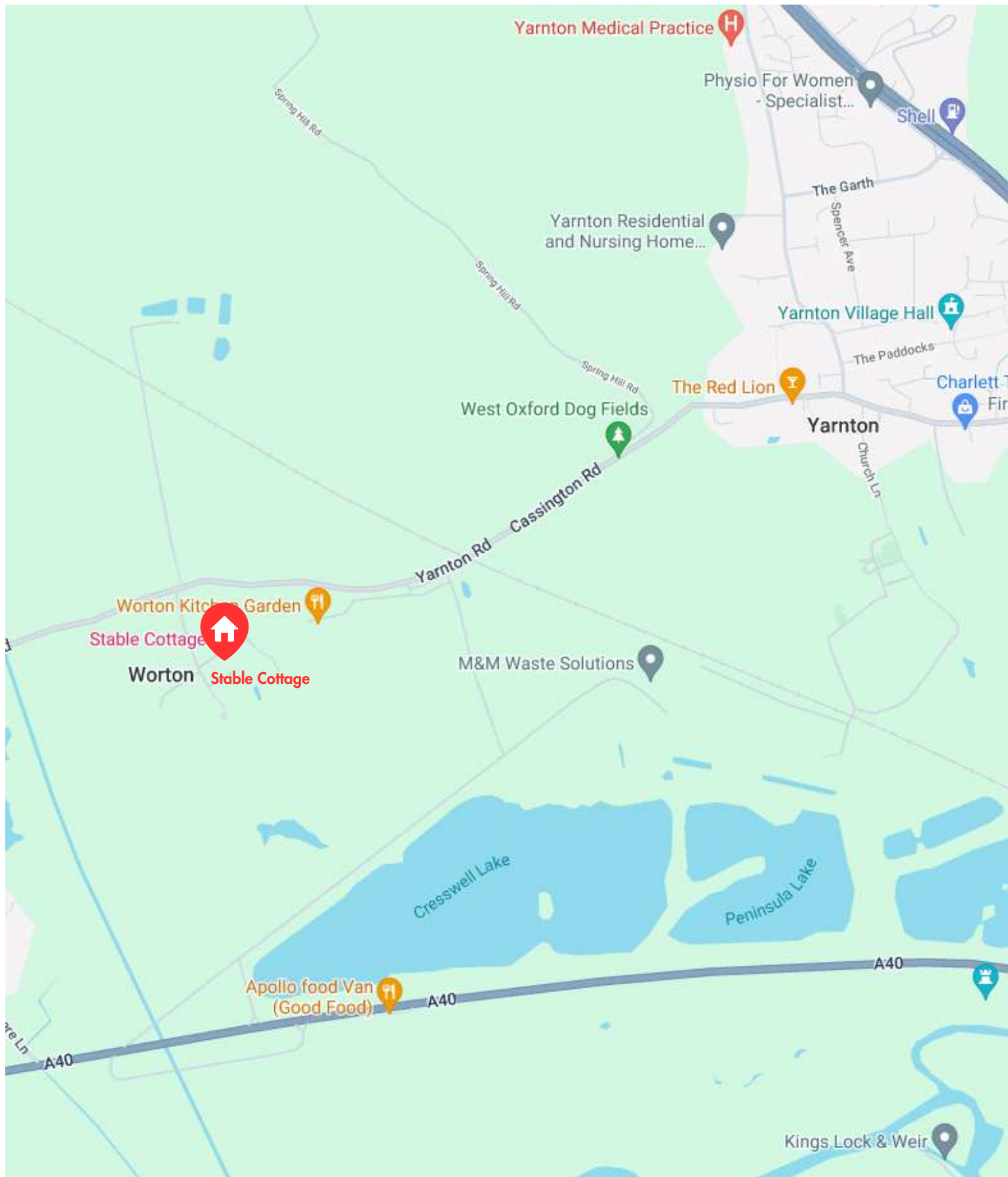




## STABLE COTTAGE FLOORPLAN









COACH HOUSE



# COACH HOUSE

## SLEEPS 12



Situated in the lower part of the hamlet of Thrupp, this detached Cotswold stone barn conversion stands in the grounds of our Manor House and lies adjacent to the 18th-century Oxford Canal.

Offering wonderful characterful accommodation for a holiday, The Coach House is a spacious and beautifully converted barn which overlooks open countryside, sleeping 12.

This Grade II listed property has beautiful traditional features, including a wood-burning stove in the living room ideal for warming your feet after those winter walks. Original beamed bedrooms, with a twin room on the ground floor. A well-equipped modern fitted kitchen with granite worktops along with utility room, with easy access to the dining room with views of the open Oxfordshire countryside. Ideal for spotting wildlife, the fenced garden is perfect for family meals or for the children to let off steam.



Situated in Thrupp, make the most of being right by the canal and rent kayaks to explore the waterways. Or amble the towpath for beautiful countryside walks, ending at one of the two pubs within walking distance from the Coach House. Cross the bridge just opposite the property and you will find Annie's Tearooms, selling delicious cakes and sandwiches.

The town of Woodstock, home to Blenheim Palace the birthplace of Sir Winston Churchill is within 5 miles. This traditional property has plenty to offer, and makes for the perfect friends or family getaway to the Oxfordshire Cotswold's.

Hiring this property entitles use of the tennis court and outdoor heated swimming pool facilities at Worton Park in Cassington, approximately a 10 minute drive away. Please note the pool is open on a seasonal basis; pool opening times also apply.







## WHY CHOOSE THE COACH HOUSE?

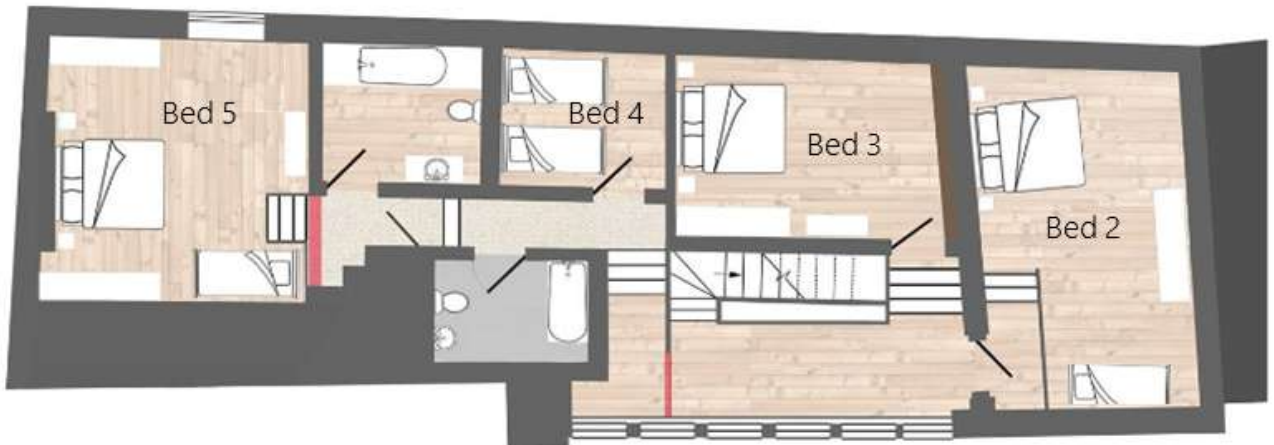
- A charming, bright barn conversion, full of character opposite the canal.
- Close to Woodstock and Blenheim palace.
- Only a 5 minute drive to the nearest train station (Oxford Parkway), where you can catch a train to London in around an hour.
- Excellent access to Oxford, where you will find beautiful architecture and fantastic selection of shops, museums and eateries.
- Use of swimming pool and tennis court a ten minute drive away on Worton Park (seasonal opening times apply).
- Countryside walks straight from the doorstep.
- Two pubs and a tearoom within walking distance,
- Well behaved dogs are welcome to stay at the property at an additional cost.



# COACH HOUSE FLOORPLAN

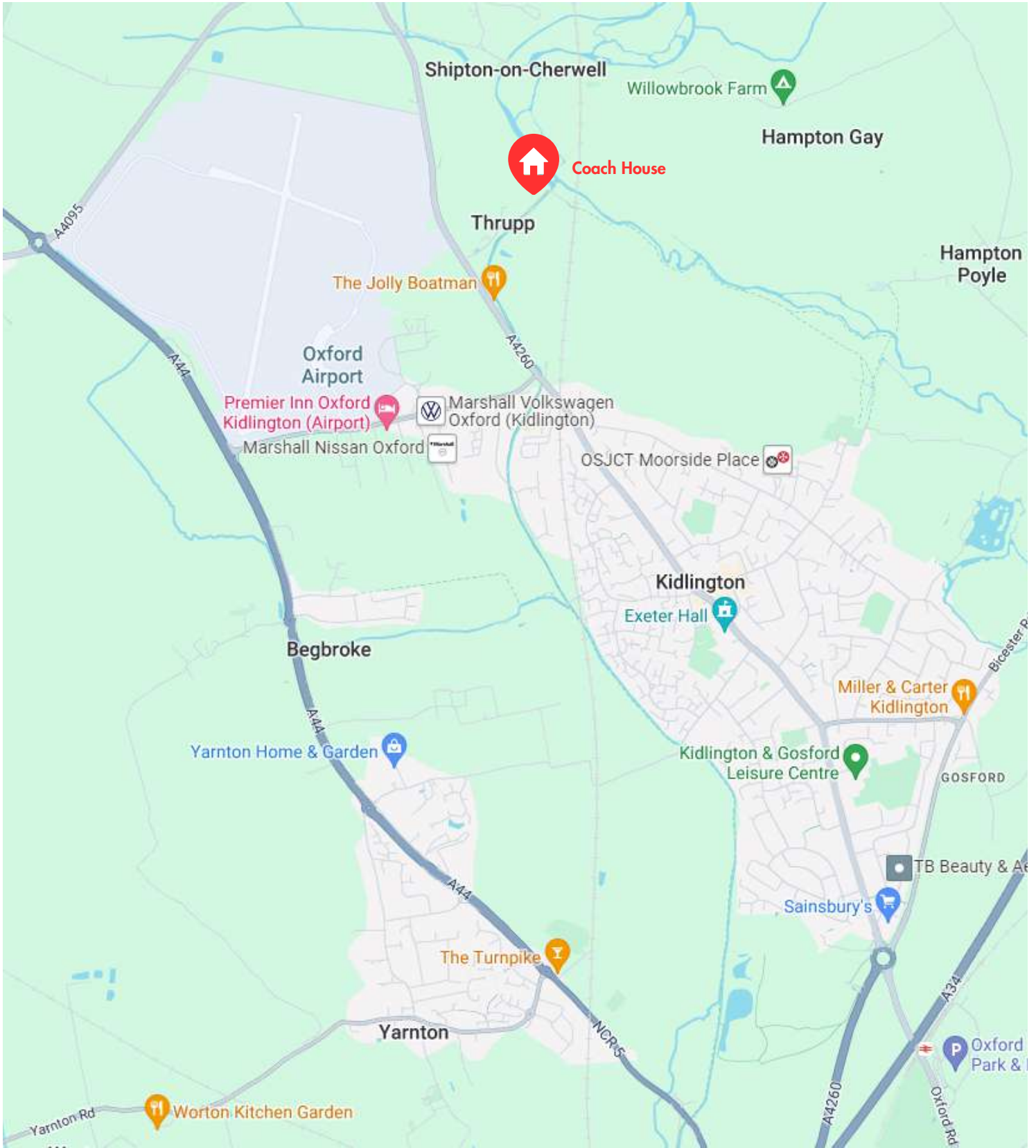


Ground Floor



First Floor







A dark rectangular sign with white text is mounted on a wooden post. The sign is secured with four screws, one in each corner. The text on the sign is arranged in two lines: "Manor" on the top line and "Farm House" on the bottom line. The sign is positioned in front of a rustic stone wall. In the background, there are trees and foliage, with sunlight filtering through the leaves, creating a bokeh effect. A thin black wire runs across the stone wall behind the sign.

Manor  
Farm House



# MANOR HOUSE

SLEEPS 18



Manor House boasts plenty of charming character with an elegant Georgian layout and barn extensions. Available for short or long stays this holiday let is ideal for a family gathering or a countryside holiday.

Sleeping 18, this beautiful Georgian manor house is ideal for large family gatherings. With an Aga in the kitchen as the hub of the house, two spacious reception rooms and a large dining room, it is the perfect house for gathering and entertaining.

Retaining many of its original features, this Grade II listed property has 7 beautiful bedrooms, 5 bathrooms, a grand dining room, a games room, large living room and a reading room. The gardens are ideal for BBQ's, picnics and croquet in the summer months, or retreat to the living room or reading room and cosy up next to the log burners with a hot chocolate in hand when the weather turns colder.



This is a bright peaceful property set back from the hustle and bustle of everyday life, however there is plenty to offer on the doorstep. Situated in the beautiful canal-side hamlet of Thrupp, there are numerous countryside walks on the doorstep, as well as pubs and a tearoom within walking distance. Why not make the most of being so close to water and rent kayaks to explore the waterway, or take the short bus ride to Oxford and get lost in the historic streets, soaking in the beautiful architecture and looking up at the dreaming spires.

Hiring this property entitles use of the tennis court and outdoor heated swimming pool facilities at Worton Park in Cassington, approximately a 10 minute drive away. Please note the pool is open on a seasonal basis; pool opening times also apply.



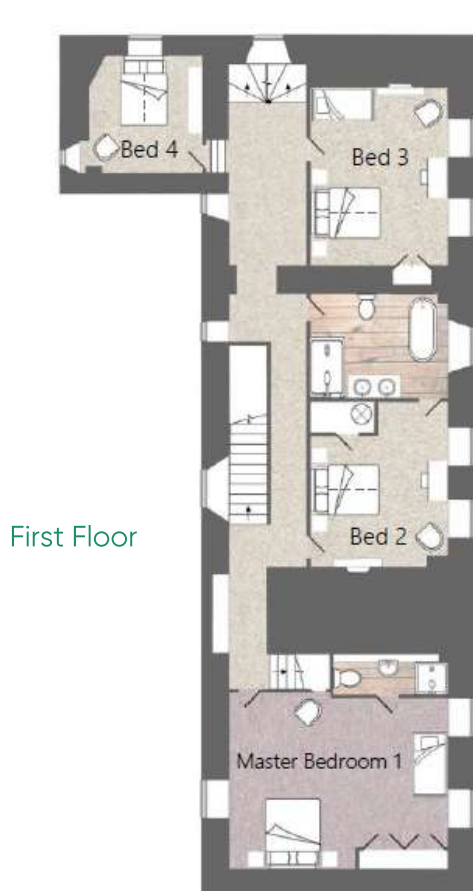


## WHY CHOOSE MANOR HOUSE?

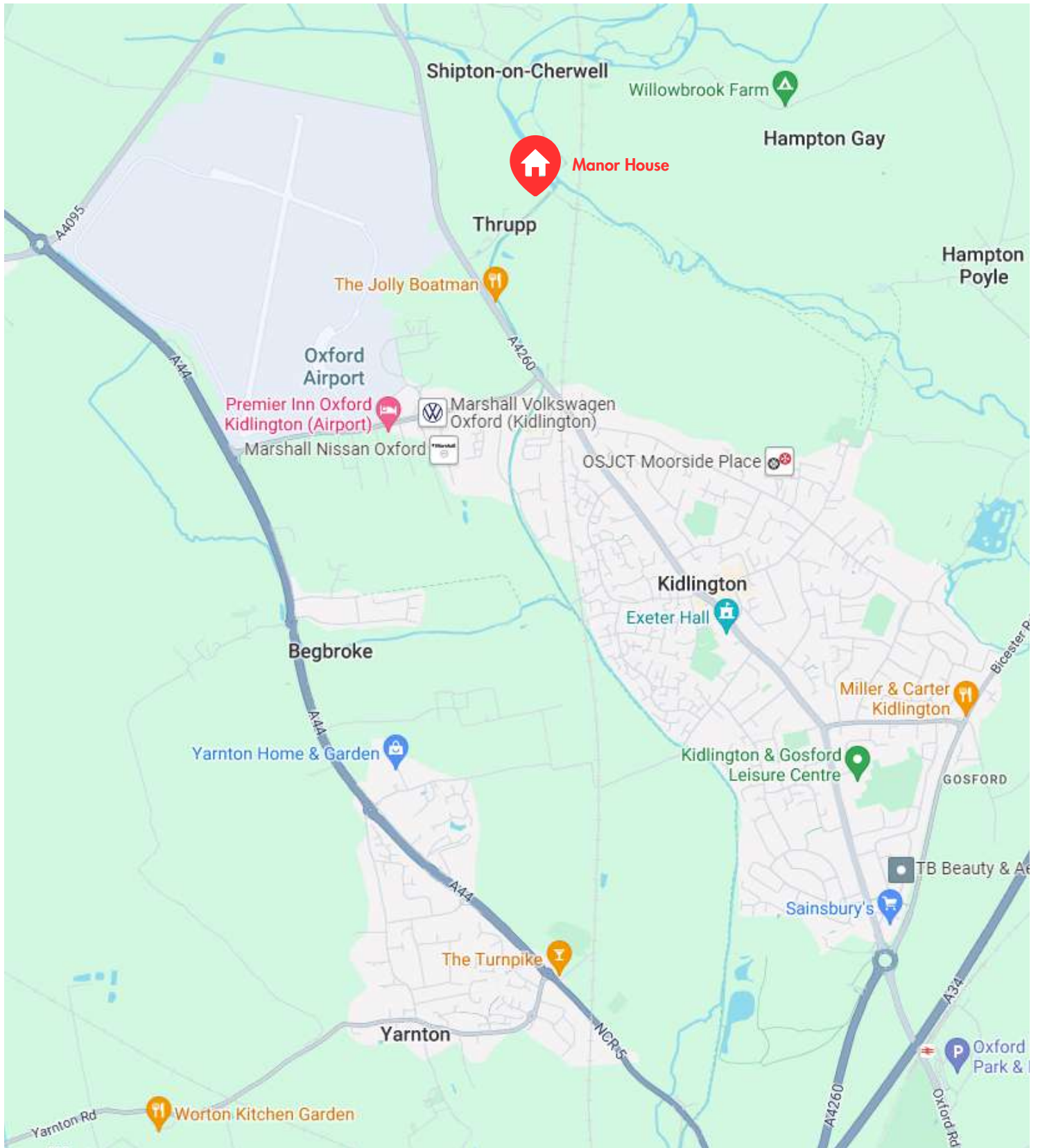
- Stunning Grade II Listed farmhouse, with countryside walks on the doorstep.
- Multiple rooms for entertaining, with a large dining room, living room, reading room and games room. Perfect for gathering friends and family.
- 5 minute drive to the nearest train station (Oxford Parkway); excellent access to Oxford & London.
- Located on the edge of the Oxfordshire Cotswolds, just over a five minute drive from Blenheim Palace.
- Use of swimming pool and tennis court a ten minute drive away on Worton Park (seasonal opening times apply).
- Fantastic outdoor space, with large lawn and gardens. perfect for garden games and picnics.
- Awarded the VisitEngland Gold award, book with confidence that you will receive nothing but quality.
- Well behaved dogs are welcome to stay at the property at an additional cost



# MANOR HOUSE FLOORPLAN











DOVECOTE



# DOVECOTE

## SLEEPS 2



Small but perfectly formed, this quirky and romantic cottage in the sleepy hamlet of Thrupp is the perfect place to enjoy a countryside getaway for two. This pretty little detached property is situated in the grounds of a manor house & lies adjacent to the 18th Century Oxford Canal, offering cosy and peaceful accommodation situated in a historic hamlet where you can watch the boats drift by.

The property makes an ideal base to visit the famous Oxford colleges or the historic market town of Woodstock, home to Blenheim Palace. Or go further afield and explore the Cotswolds, Shakespeare's Stratford-upon-Avon or Lod Shops 2 miles, pubs ¼ mile.

Compact dining room/kitchen area. Shower room and WC. First floor: Cosy galleried landing with double bedroom, TV, seating area and stained glass window. NB: This property was built as a dovecote in the 17th century and as such, is small but delightful. One small dog is aloud to stay at the property for an additional cost.

The Dovecote is just next door to the Manor House and The Coach House, perfect to rent alongside them if you need to sleep extra guests.



Thrupp has two public houses, The Boat Inn and the Jolly Boatman, full of character, open fires and beamed ceilings. Annie's Tea Room, situated on the other side of the canal has a wonderful selection of homemade cakes and pastries.

An amble along the towpath or a short drive brings you to the village of Kidlington. Kidlington is recognised as the largest village in England, with several supermarkets, post office, banks, chemists and various pubs/cafes. There is a regular bus service to Oxford from Kidlington along with a nearby Park and Ride service. There is also a bus stop available on the main road outside Thrupp, approximately 15 minutes walk from the cottage.

Hiring this property entitles use of the tennis court and outdoor heated swimming pool facilities at Worton Park in Cassington, approx. a 10 minute drive away. Please note these are available on a seasonal basis (usually May-September); pool opening times also apply.





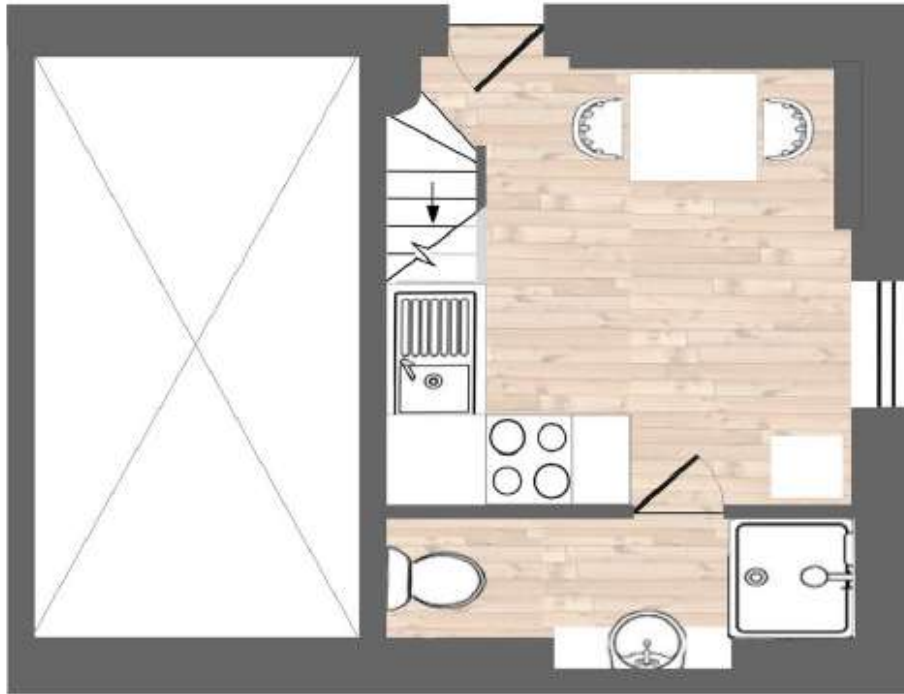
## WHY CHOOSE THE DOVECOTE?

- A cosy and quirky Grade II Listed cottage located in the beautiful canal-side village of Thrupp.
- Approximately a 5 minute drive to Blenheim Palace.
- Pubs and tearoom within walking distance.
- 10 minute drive to nearest train station Oxford Parkway, where you can train to London in around an hour.
- Use of swimming pool and tennis court a ten minute drive away on Worton Park (seasonal opening times apply)
- Perfectly placed to explore Oxford and the Cotswolds.
- Awarded the VisitEngland Gold award, book with confidence that you will receive nothing but quality.
- A well behaved dog is welcome to stay at the property at an additional cost.

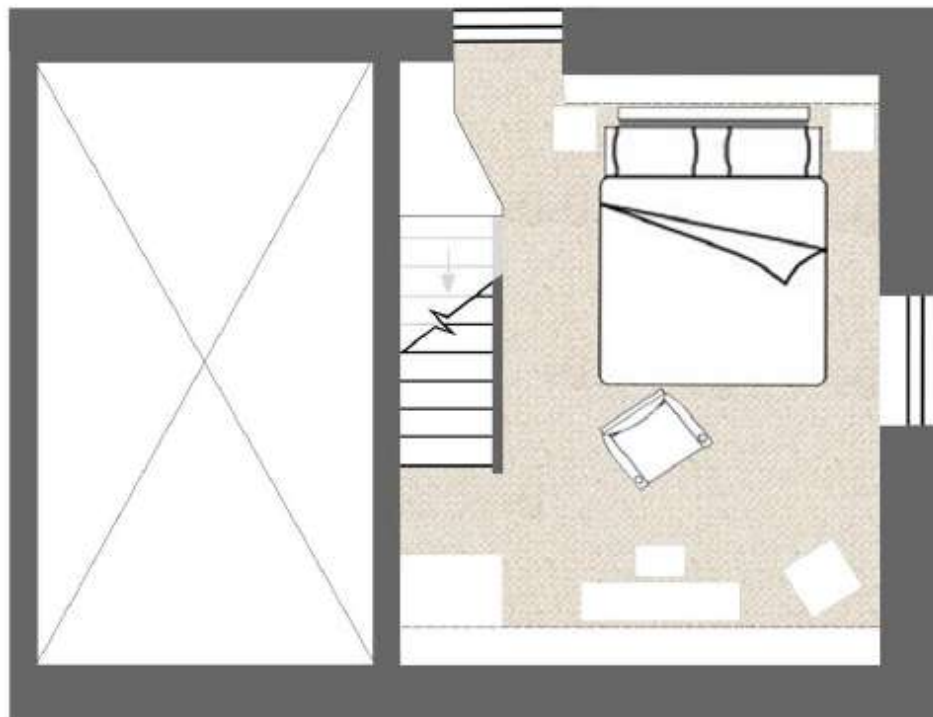




# DOVECOTE FLOORPLAN

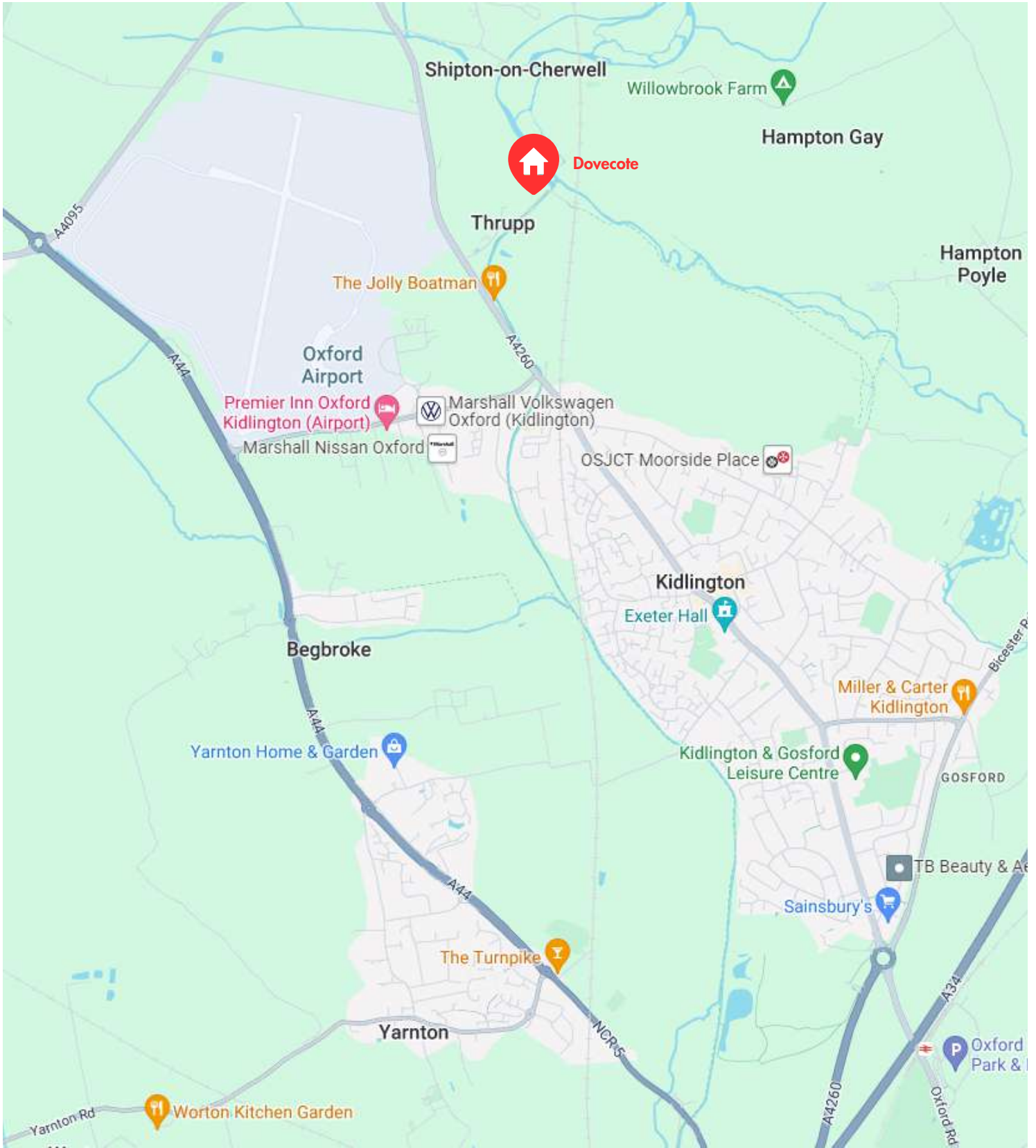


Ground Floor



First Floor







A wooden-framed letterboard sign is placed on a wooden table. To the left of the sign is a white ceramic pot containing a green succulent. The background shows a white wall with a vertical crack and a window on the left. In the background to the right, a wooden stool is visible on a light-colored floor.

WELCOME  
TO  
WOODSTOCK



# WOODSTOCK MANOR

SLEEPS 18

Whether you're seeking the perfect base to explore the Cotswolds or a peaceful retreat to spend time with family and friends, our Grade II listed townhouse is the ideal place to relax, unwind and enjoy the local area.

Nestled in the heart of the historic market town of Woodstock, our stunning seven bedroomed manor house is the perfect place to gather your loved ones and enjoy a relaxing weekend break in the countryside.

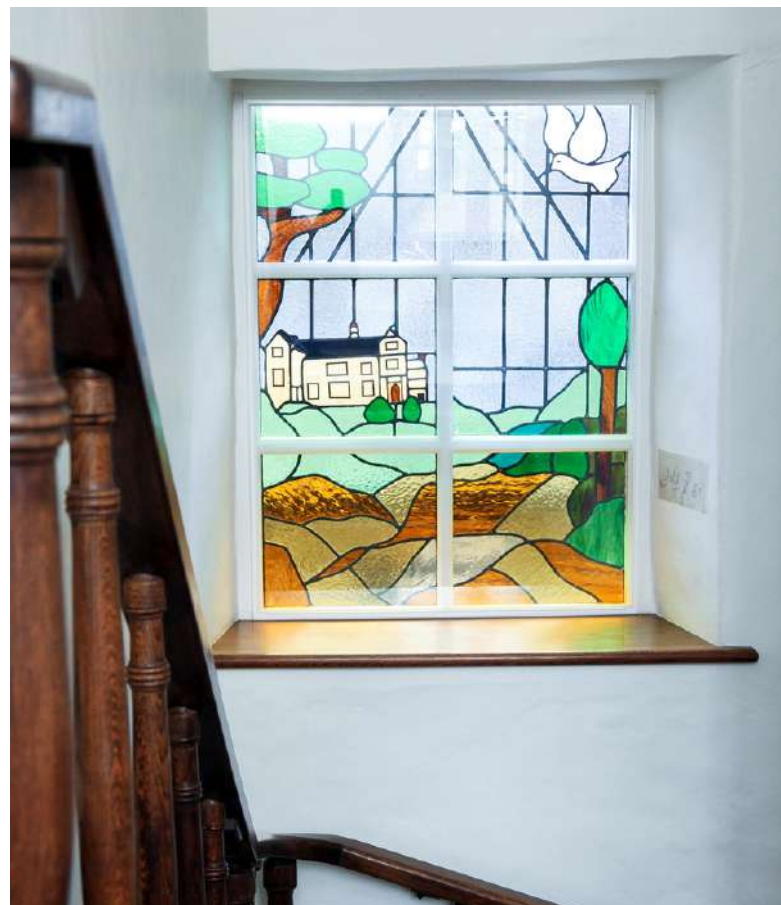
Right on the doorstep of Blenheim Palace on the edge of the Cotswolds, there is so much to see and do; gorgeous walks, countryside pubs and just a short drive from the dreaming spires of Oxford where you'll find an abundance of shops, museums and restaurants, as well as a train line with direct links to London in under an hour. Our spacious, fully-furnished house makes the perfect base from which to explore it all.



Being a Grade II listed property, Woodstock Manor exudes character and charm. This historic property was even reportedly the birthplace of Edward of Woodstock, also known as The Black Prince!

Retaining many of its original features, including a large inglenook fireplace with a flagstone hearth, studded oak doors and exposed beams, the house is steeped with character and history. With comfortable, stylish decor and ample amenities including a large garden and fully-equipped kitchen, our holiday let is the perfect space to switch off and relax.

Hiring this property entitles use of the tennis court and outdoor heated swimming pool facilities at Worton Park in Cassington, approximately a 10 minute drive away. Please note the pool is open on a seasonal basis; pool opening times also apply.







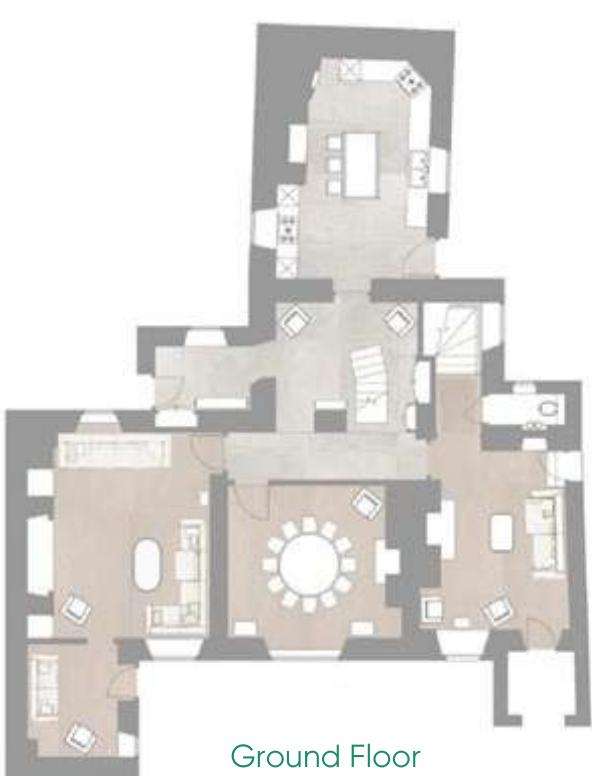
## WHY CHOOSE WOODSTOCK MANOR?

- Elegant Grade II Listed property located in the beautiful market town of Woodstock
- A stones throw from the grounds of Blenheim Palace
- Within walking distance of superb shops, cafes, bakeries & pubs
- 15 minute drive to nearest train station in Oxford, where you can train to London in around an hour
- Use of swimming pool and tennis court a ten minute drive away on Worton Park (seasonal opening times apply)
- A beautifully restored, spacious townhouse with original features
- Awarded the VisitEngland Gold award, book with confidence that you will receive nothing but quality.
- Well behaved dogs are welcome to stay at the property at an additional cost.





# WOODSTOCK MANOR FLOORPLAN



Ground Floor

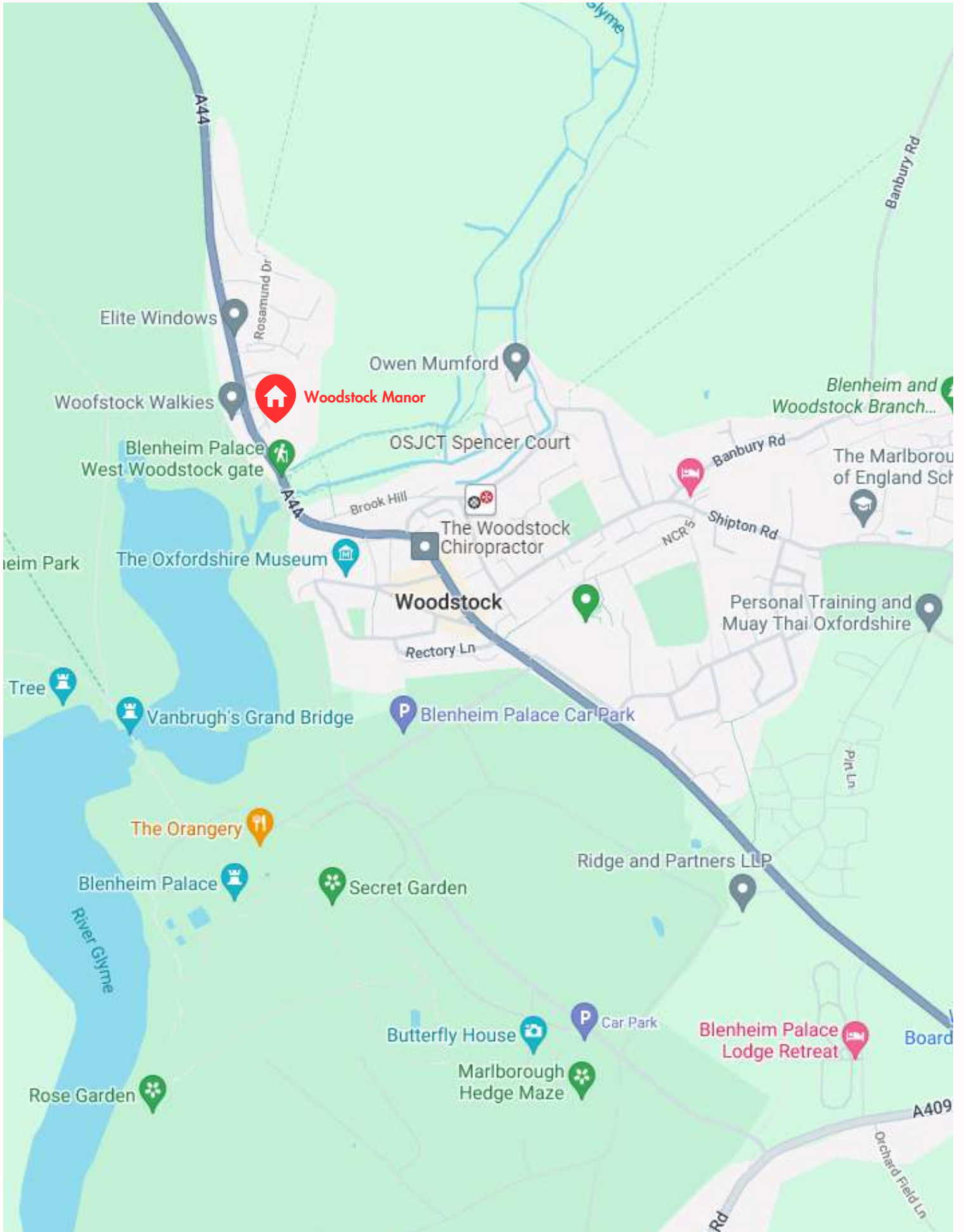


First Floor



Second Floor





Elite Windows

Owen Mumford

Woodstock Walkies

Woodstock Manor

Blenheim Palace  
West Woodstock gate

OSJCT Spencer Court

Blenheim and  
Woodstock Branch...

The Oxfordshire Museum

The Woodstock  
Chiropractor

The Marlborough  
of England Sch

Woodstock

Personal Training and  
Muay Thai Oxfordshire

Vanbrugh's Grand Bridge

Blenheim Palace Car Park

The Orangery

Blenheim Palace

Secret Garden

Ridge and Partners LLP

River Glyme

Butterfly House

Car Park

Blenheim Palace  
Lodge Retreat

Rose Garden

Marlborough  
Hedge Maze

A409

Orchard Field Ln







# HILLCREST

SLEEPS 17

Hidden away on the cusp of Oxford, our newest property provides the perfect combination of being in close proximity to the city, whilst also having the space and surroundings to unwind and spend time together in a newly refurbished contemporary lodge style setting.

Including 7 bedrooms (3 on the ground floor and 4 on the first floor), 4 bathrooms, a spacious living room, large kitchen diner, boot room and a wooden cabin, the house lends itself perfectly for large gatherings of friends and family.

With inspiration taken from the minimalistic interiors of Scandinavia, you'll find earthy tones that blend effortlessly with clean white lines and natural wood to create a calming contemporary environment.

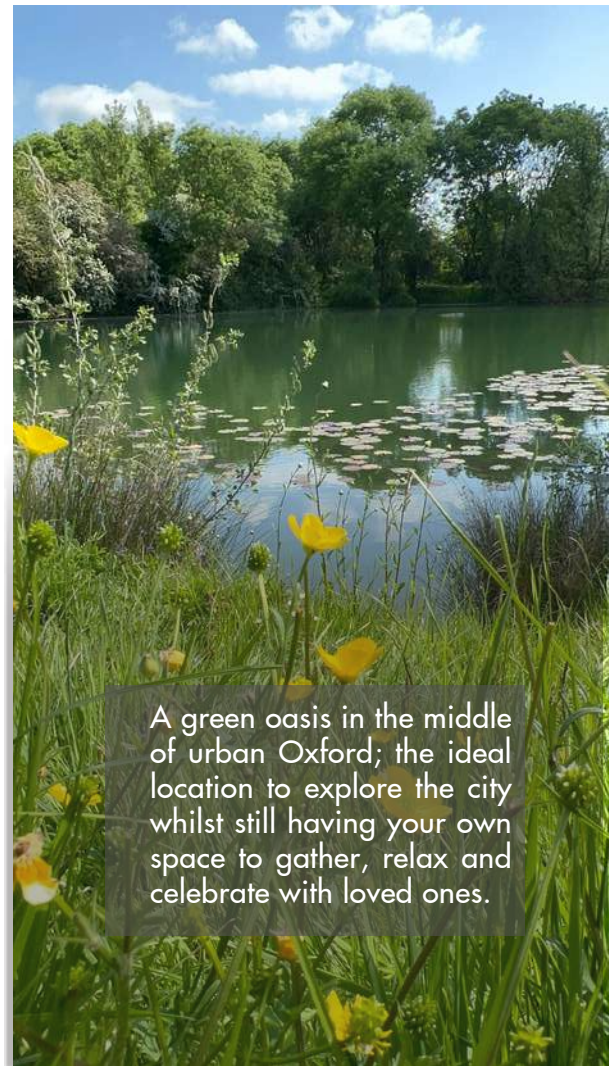


The open plan layout downstairs creates the ideal space to relax and gather; with the living room, dining room and kitchen flowing into each other seamlessly to create a flexible and inviting social area - perfect for feasting, drinks, games and making the most of each other's company.

Flooded with natural light, thanks to large glass windows, doors and skylights throughout, you can make the most of the stunning serene lakeside view. Surrounded by trees, you have complete privacy and seclusion from the urban surroundings, making it your own private oasis.

Only 2.5 miles from the city centre, you can be in the heart of Oxford within just a few minutes by car, taxi or bus; taking in the beautiful architecture, exploring the historic streets & museums, with fantastic shops, cafés, restaurants and pubs that will spoil you for choice.





## WHY CHOOSE HILLCREST?

- Looking for the perfect house to gather your nearest and dearest and celebrate? This is the house for you!
- Only a ten minute drive to the city centre, making Hillcrest the ideal base to explore the dreaming spires of Oxford.
- Equipped with an outdoor cabin for additional social space, with a wooden bar and seating area.
- Just a 5 minute drive to the nearest train station, Oxford Parkway, where you can get a direct train to London.
- Use of swimming pool and tennis court a ten minute drive away on Worton Park (seasonal opening times apply).
- Enjoy the serene view of the treelined lake. Newly renovated to an extremely high calibre, with Scandinavian influences and contemporary decor.
- Well behaved dogs are welcome to stay at the property at an additional cost.









# HILLCREST FLOORPLAN

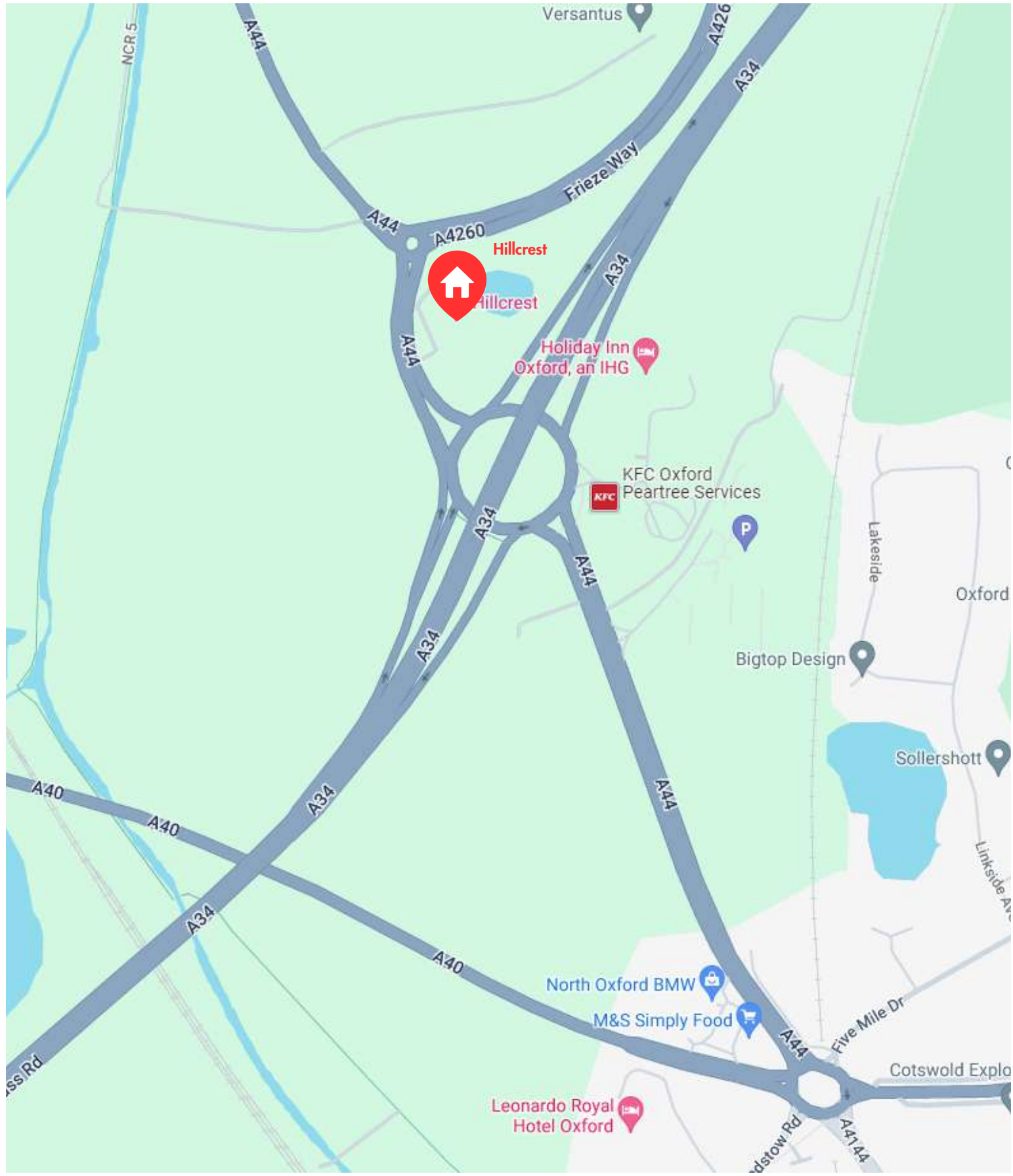
Ground Floor



First Floor











[enquiries@wortonpark.co.uk](mailto:enquiries@wortonpark.co.uk) ~ 01865 882644 ~ [www.wortonpark.co.uk](http://www.wortonpark.co.uk)